



7255 Weaver Court, Vancouver

604-813-4686

anthony@findyourproperty.ca

www.findyourproperty.ca

Oakwyn Realty Downtown Ltd.

Lower Floor: 408 sq. ft.

Main Floor: 661 sq. ft.

First Floor: 358 sq. ft.

Upper Floor: 389 sq. ft.

Total Livable: 1,816 sq. ft.

Patio: 114 sq. ft.

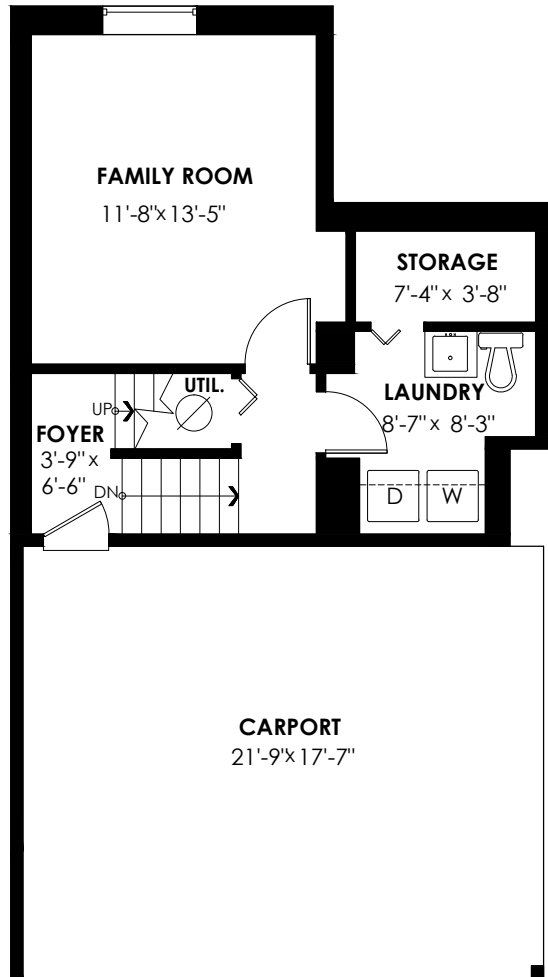
Carport: 382 sq. ft.

Balcony: 117 sq. ft.

Total Extras: 613 sq. ft.

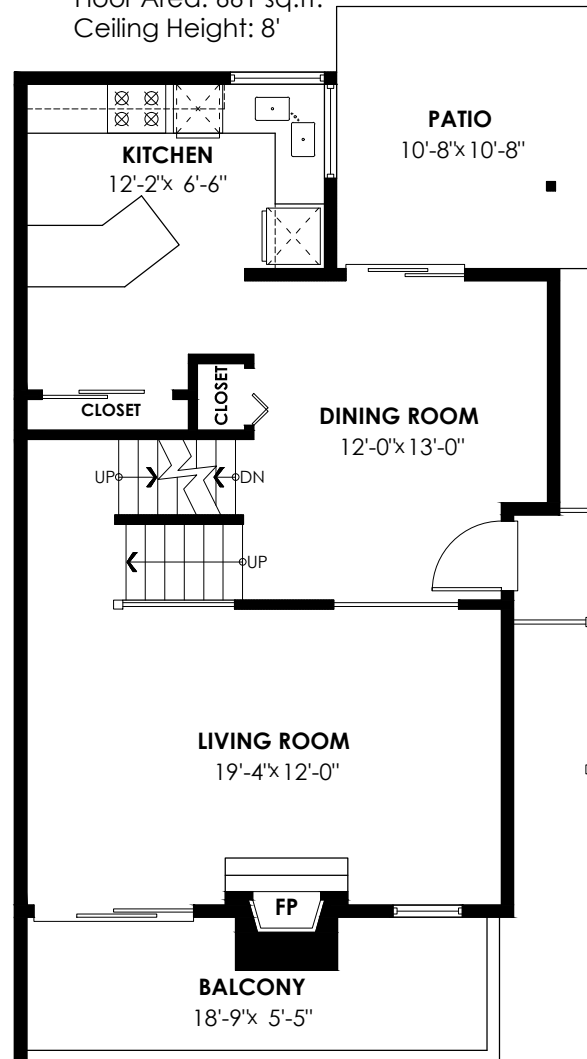
Lower Floor Plan

Floor Area: 408 sq.ft.
Ceiling Height: 6'-8"



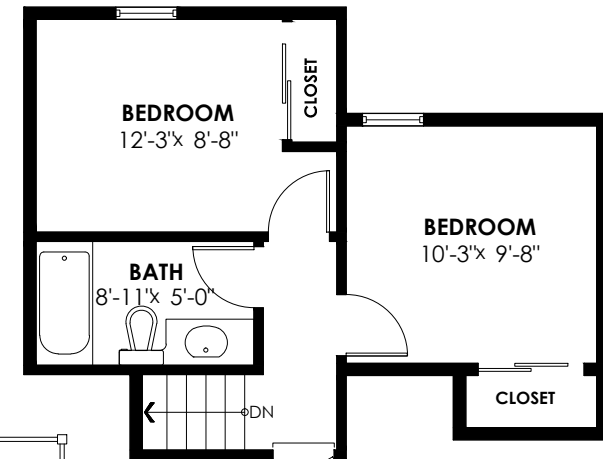
Main Floor Plan

Floor Area: 661 sq.ft.
Ceiling Height: 8'



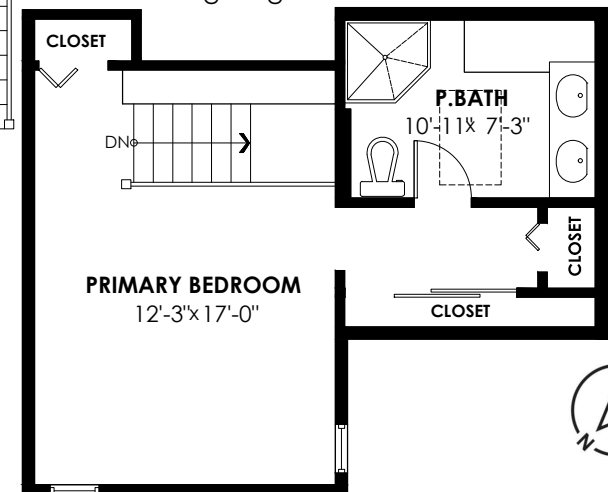
First Floor Plan

Floor Area: 358 sq.ft.
Ceiling Height: 10'-11"



Upper Floor Plan

Floor Area: 389 sq.ft.
Ceiling Height: 10'-11"



E&O Insured. For advertising purposes only. Not intended for architectural or construction use. Floorplan and measurements are approximate within +/- 2% tolerance.

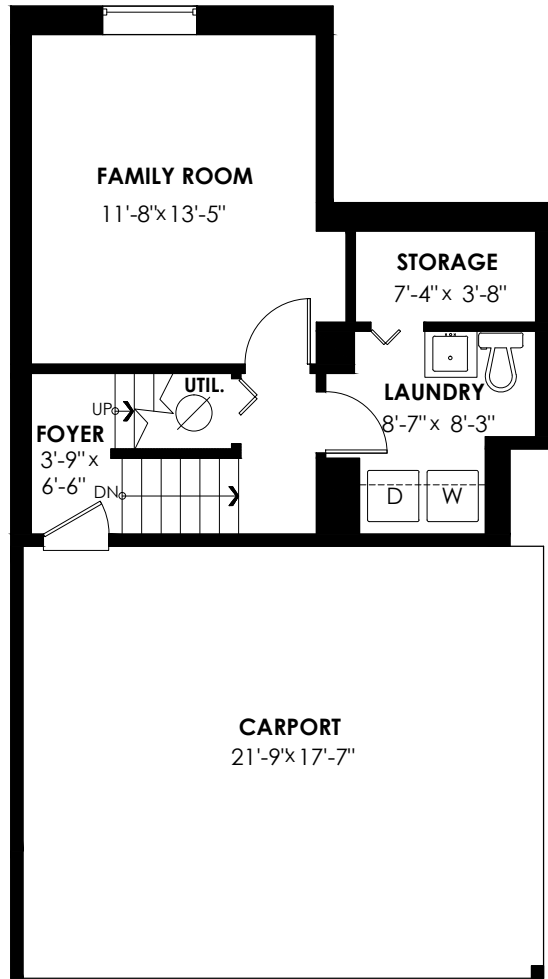
7255 Weaver Court, Vancouver

Lower Floor: 408 sq. ft.
 Main Floor: 661 sq. ft.
 First Floor: 358 sq. ft.
 Upper Floor: 389 sq. ft.
Total Livable: 1,816 sq. ft.

Patio: 114 sq. ft.
 Carport: 382 sq. ft.
 Balcony: 117 sq. ft.
Total Extras: 613 sq. ft.

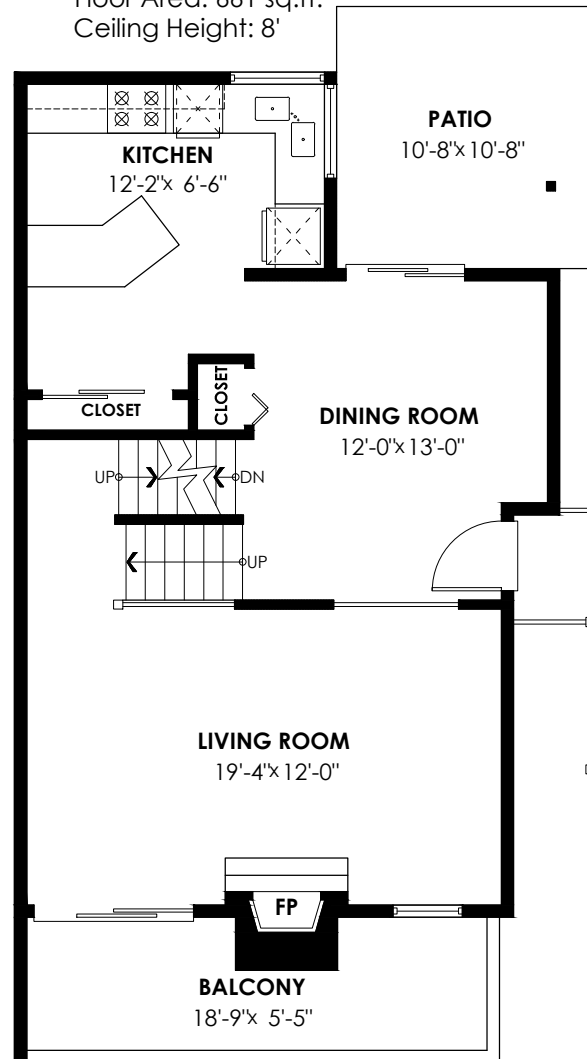
Lower Floor Plan

Floor Area: 408 sq. ft.
 Ceiling Height: 6'-8"



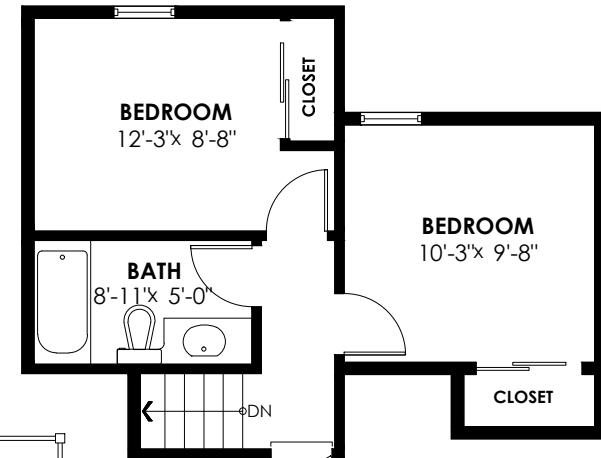
Main Floor Plan

Floor Area: 661 sq. ft.
 Ceiling Height: 8'



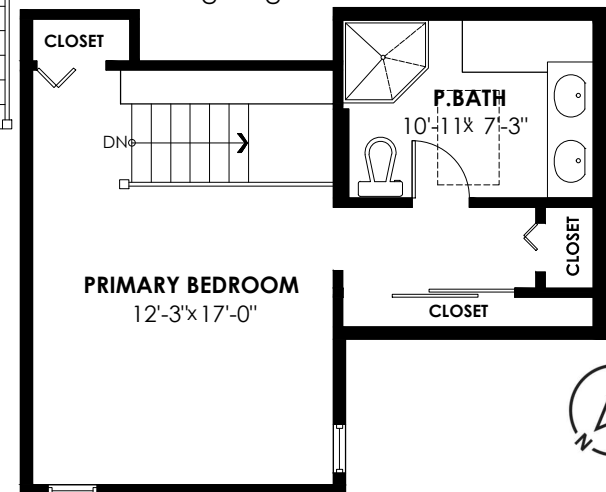
First Floor Plan

Floor Area: 358 sq. ft.
 Ceiling Height: 10'-11"



Upper Floor Plan

Floor Area: 389 sq. ft.
 Ceiling Height: 10'-11"



How Your Square Footage is Calculated

FOR ALL RESIDENTIAL HOMES

Any space that is not suitable for year-round use or has a ceiling height of less than 4 feet will not be included in the "TOTAL LIVABLE" square footage. This includes decks, garages or attics, and any space that does not have insulation or a source of heat. An area that is open to the floor below is not considered living space either. Areas occupied by stair treads are included in the "TOTAL LIVABLE" square footage.

FOR DETACHED HOMES / TOWNHOMES

Total square footage is calculated to the outside of exterior walls.

FOR CONDOMINIUMS / APARTMENTS

Total square footage is calculated to the middle of shared or adjoining walls and the outside of non-shared, exterior walls or common area walls. Since shared wall thickness is unknown, we assume a 12" fire wall and assign 6" for any wall that cannot be identified as exterior or hallway.

FOR COMMERCIAL AND INDUSTRIAL

Square footage is based on interior measurements, not taken from original blueprints. Demising walls assumed to be 8.5". SQFT to BOMA Standard for retail ANSI/BOMA Z 65.5.5-2010: SQFT taken to center of demising walls and to exterior line of exterior walls (to the glass line of walls with 50% or more glass). Door setbacks included in SQFT. No common area or gross up (if any) accounted for in calculations.