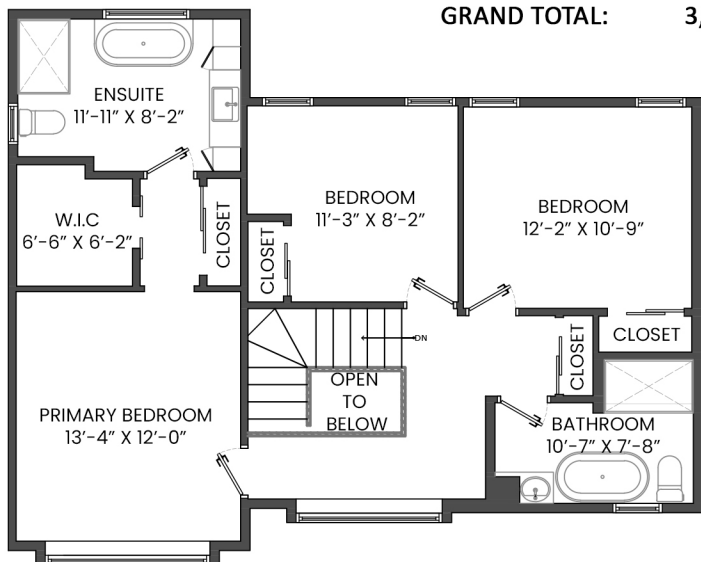
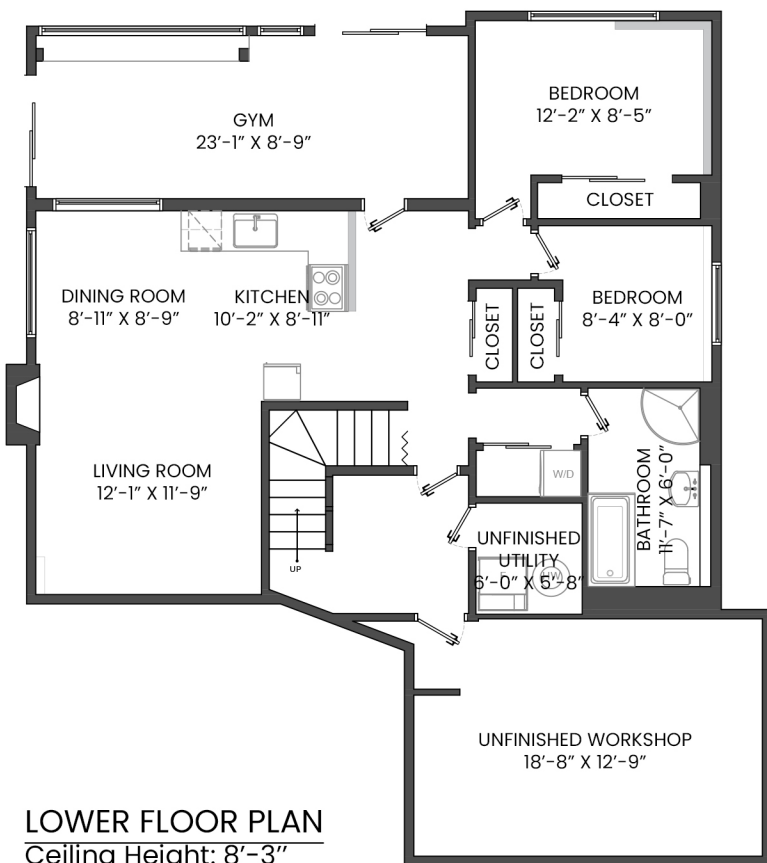


1501 OSTLER COURT, NORTH VANCOUVER, BC

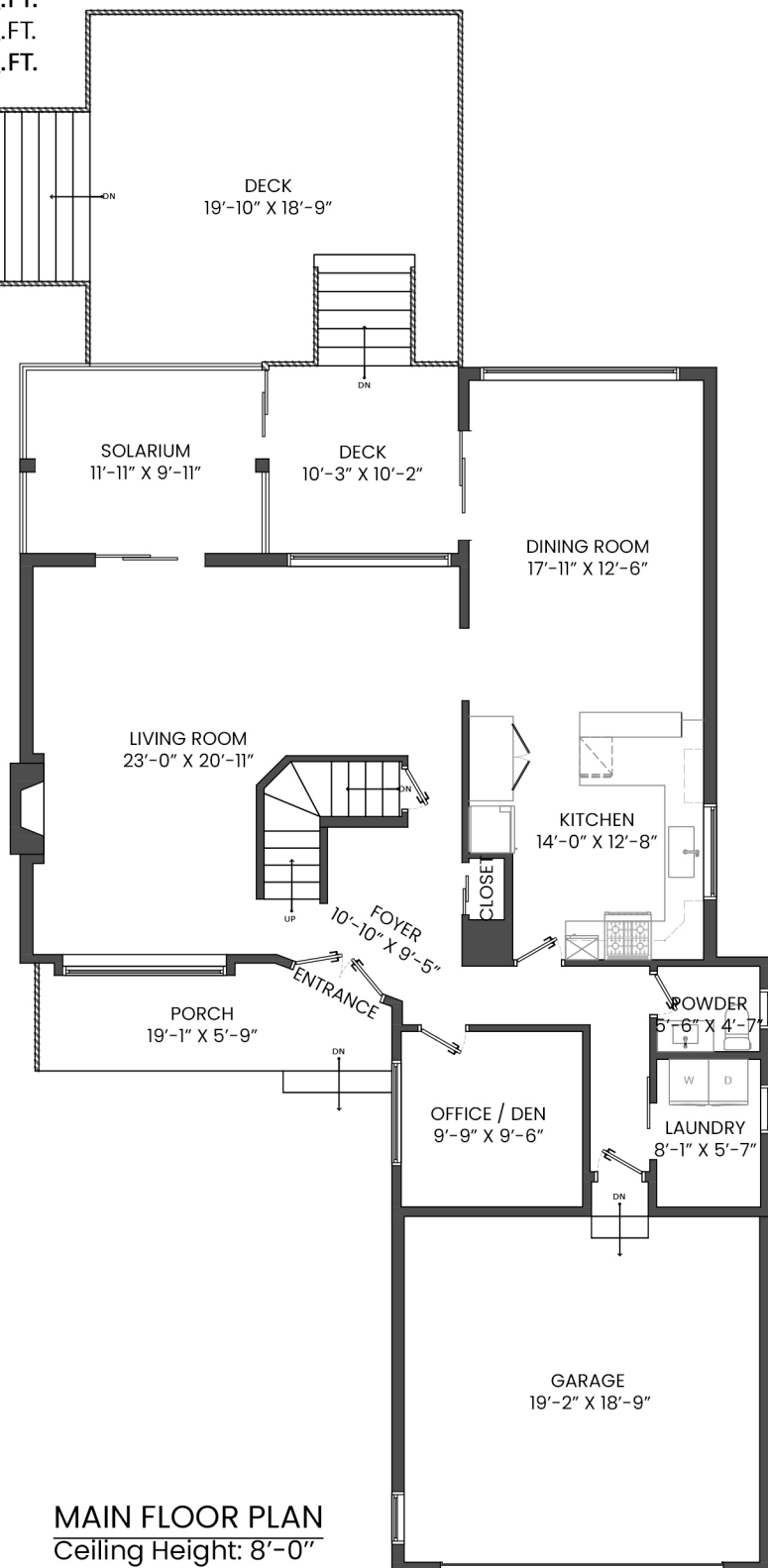
LOWER FLOOR TOTAL: 1,167 SQ.FT. GARAGE: 394 SQ. FT.
 MAIN FLOOR TOTAL: 1,353 SQ.FT. DECK TOTAL: 446 SQ. FT.
 UPPER FLOOR TOTAL: 906 SQ.FT. PORCH: 97 SQ. FT.
TOTAL: 3,426 SQ.FT.
 UNFINISHED TOTAL: 272 SQ.FT.
GRAND TOTAL: 3,698 SQ.FT.



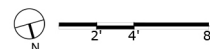
UPPER FLOOR PLAN
Ceiling Height: 8'-0"



LOWER FLOOR PLAN
Ceiling Height: 8'-3"



MAIN FLOOR PLAN
Ceiling Height: 8'-0"



Arash Solaimani PREC*
 778-688-0544
 arashsolaimani@royallepage.ca
 www.solaimani.ca

