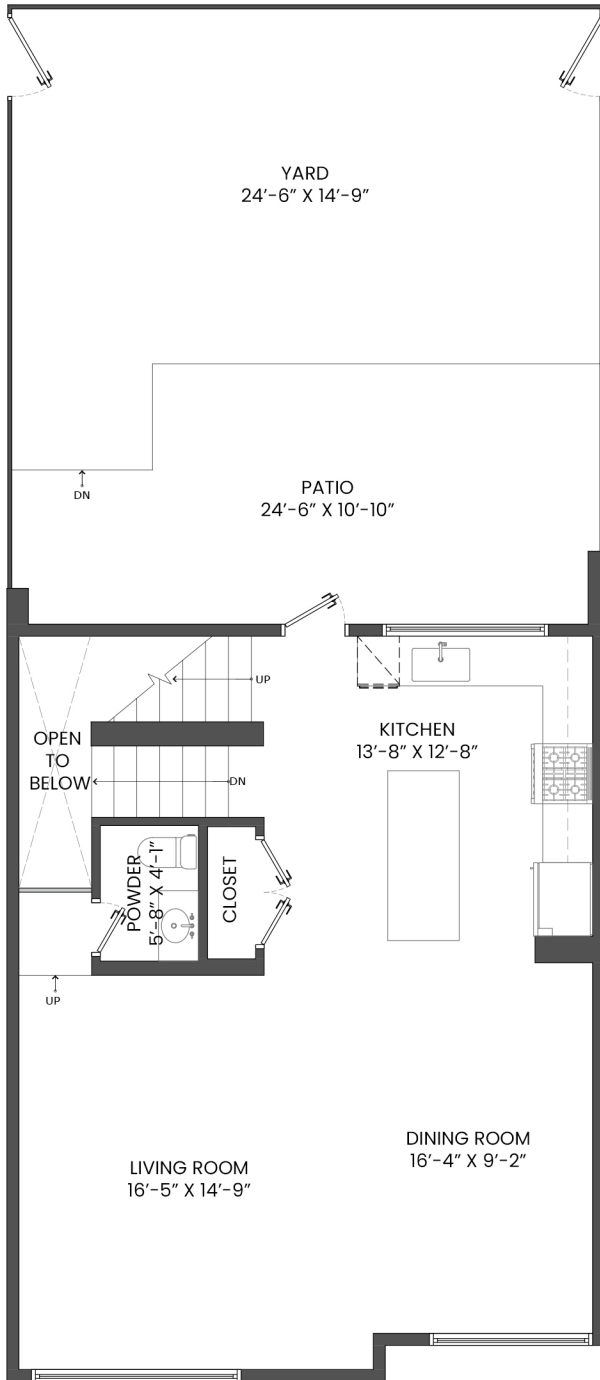
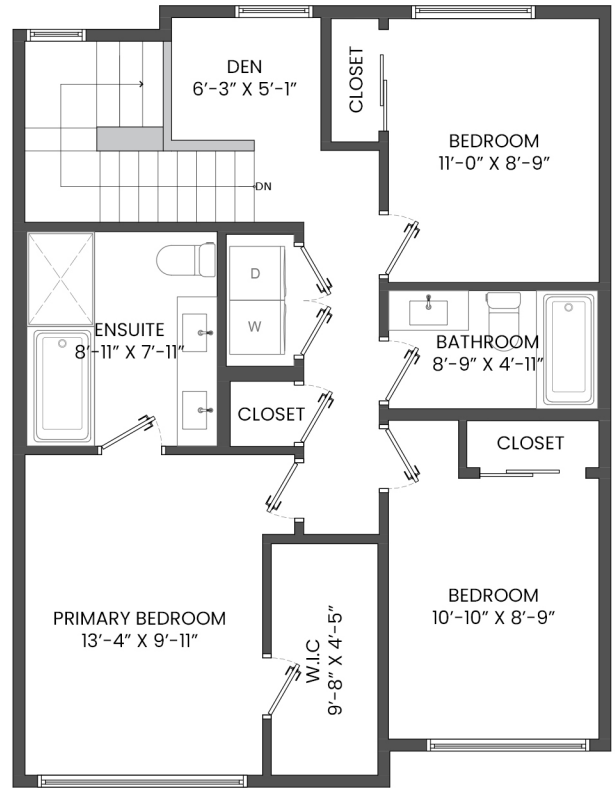


29-3597 MALSUM DRIVE, NORTH VANCOUVER, BC

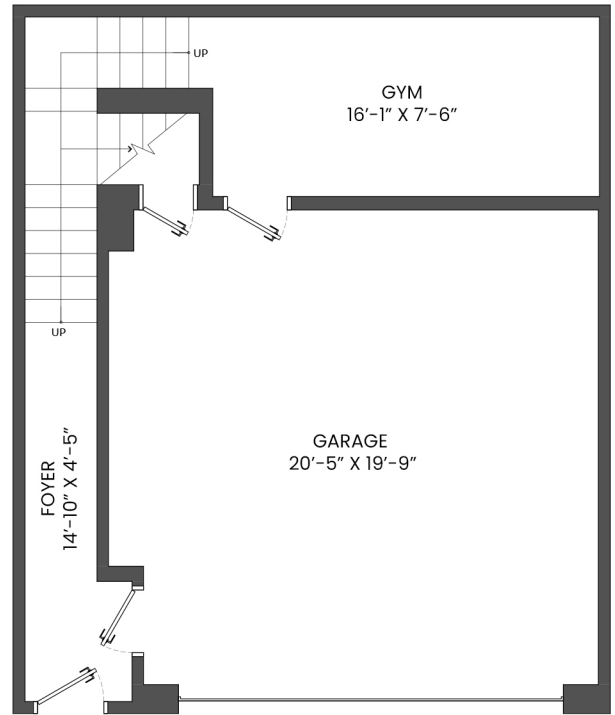
LOWER FLOOR TOTAL: 298 SQ.FT. GARAGE: 424 SQ. FT.
 MAIN FLOOR TOTAL: 758 SQ.FT. YARD: 389 SQ. FT.
 UPPER FLOOR TOTAL: 775 SQ.FT. PATIO: 237 SQ. FT.
TOTAL: 1,831 SQ.FT.



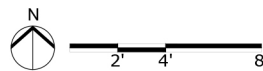
MAIN FLOOR PLAN
 Ceiling Height: 8'-9"



UPPER FLOOR PLAN
 Ceiling Height: 9'-0"



LOWER FLOOR PLAN
 Ceiling Height: 8'-0"



Arash Solaimani PREC*
 778-688-0544
 arashsolaimani@royallepage.ca
 www.solaimani.ca



* PERSONAL REAL ESTATE CORPORATION. THE FLOOR PLAN ILLUSTRATION IS NOT SUITABLE FOR CONSTRUCTION/ ARCHITECTURAL PURPOSES. MEASUREMENTS ARE APPROXIMATE AND MAY NOT BE TO SCALE. E&O INSURED. FLOOR PLAN DESIGNED BY ISHOT.CA ENTERPRISES INC. 604-368-7979 ISHOT.CA