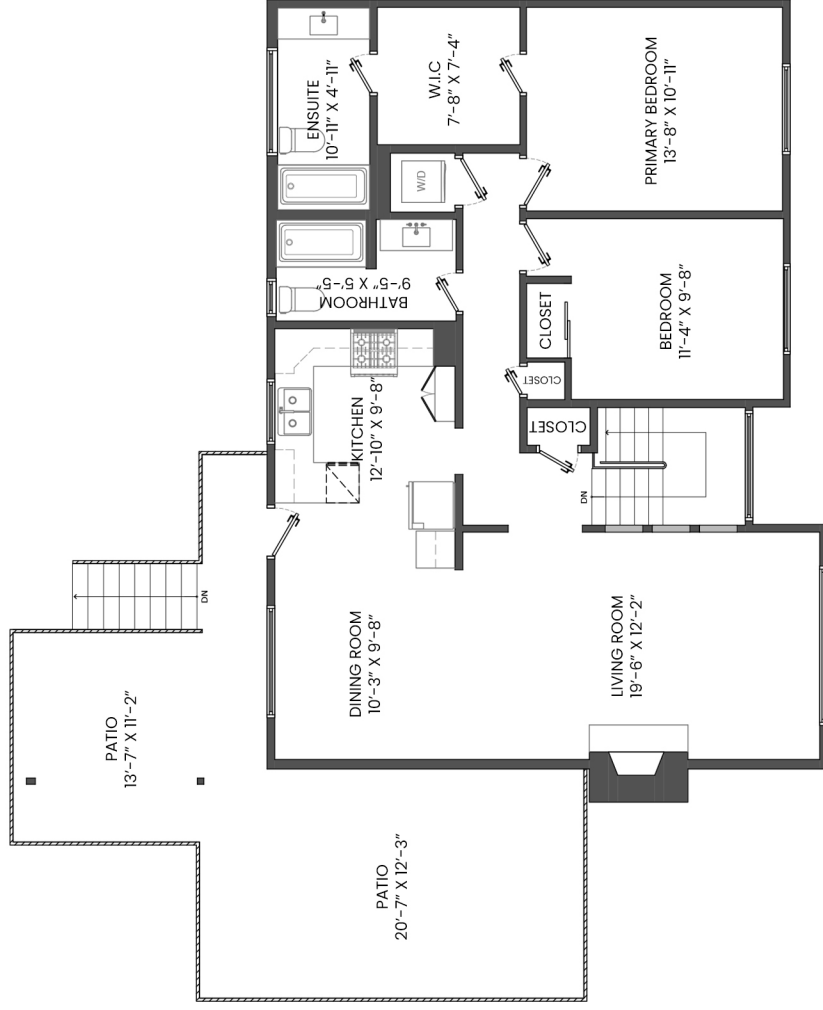
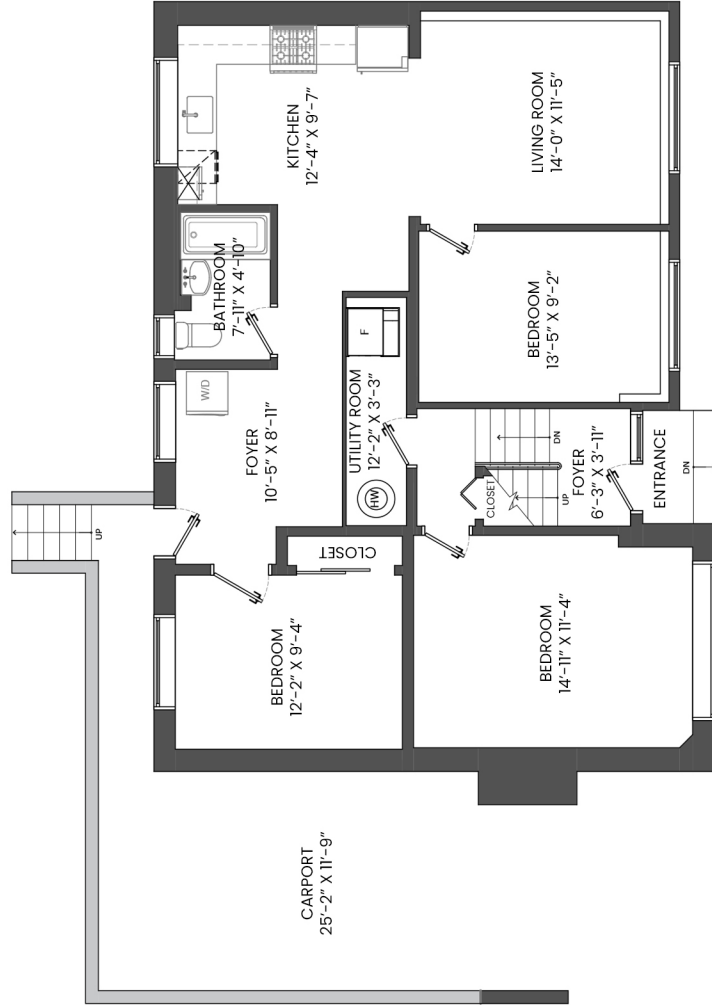


1498 DORAN ROAD, NORTH VANCOUVER, BC

LOWER FLOOR TOTAL: 1,173 SQ.FT.
 MAIN FLOOR TOTAL: 1,166 SQ.FT.
TOTAL: 2,339 SQ.FT.
 PATIO: 423 SQ. FT.
 CARPORT: 286 SQ. FT.



MAIN FLOOR PLAN
 Ceiling Height: 8'-0"



LOWER FLOOR PLAN
 Ceiling Height: 7'-8"

AS

Arash Solaimani PREC*
 778-688-0544
 arashsolaimani@royallepage.ca
 www.solaimani.ca



* PERSONAL REAL ESTATE CORPORATION THE FLOOR PLAN ILLUSTRATION IS NOT SUITABLE FOR CONSTRUCTION/ ARCHITECTURAL PURPOSES. MEASUREMENTS ARE APPROXIMATE AND MAY NOT BE TO SCALE. E&O INSURED.
 FLOOR PLAN DESIGNED BY ISHOT.CA ENTERPRISES INC. 604-368-7979 ISHOT.CA