



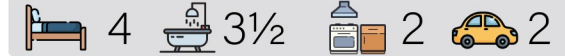
Carson Green  
604.506.5364  
carson@wallacegreen.ca

Scott Wallace  
604.377.4551  
scott@wallacegreen.ca



# 645 4th Street East North Vancouver

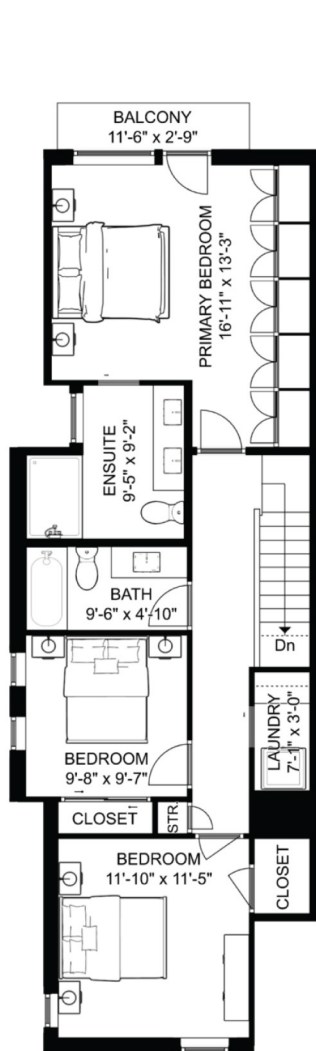
RENTAL SUITE | 479 sq.ft.  
Ceiling Height: 7'-9" to 8'-10"



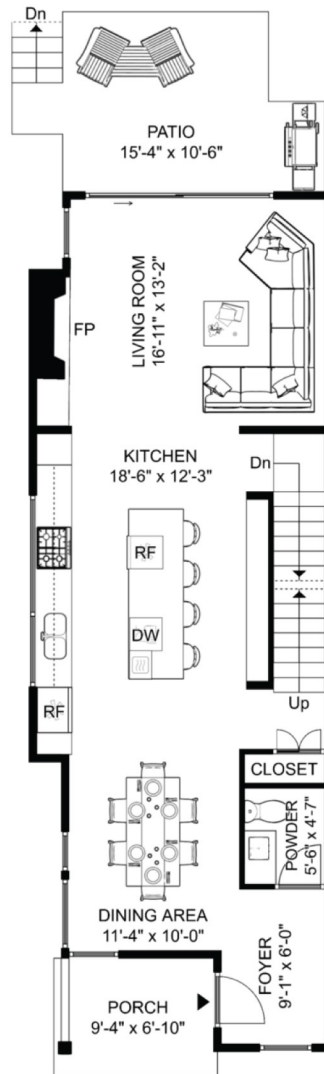
INTERIOR LIVING SPACE	
UPPER FLOOR	863 sq.ft.
MAIN FLOOR	812 sq.ft.
LOWER FLOOR	276 sq.ft.
RENTAL SUITE	479 sq.ft.
<b>TOTAL AREA</b>	<b>2,430 sq.ft.</b>

AUXILIARY	
GARAGE	225 sq.ft.
CAR PARK	156 sq.ft.
PORCH	64 sq.ft.
TOTAL PATIO	480 sq.ft.
BALCONY	32 sq.ft.
<b>TOTAL</b>	<b>957 sq.ft.</b>

COMBINED TOTAL 3,387 sq.ft.



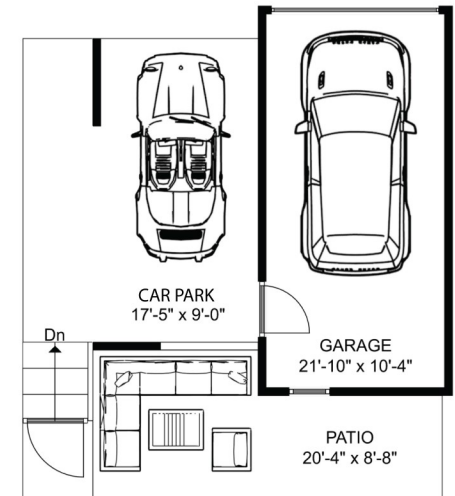
UPPER FLOOR | 863 sq.ft.  
Ceiling Height: 8'-11" to 11'-3"



MAIN FLOOR | 812 sq.ft.  
Ceiling Height: 8'-0" to 8'-11"



LOWER FLOOR | 231 sq.ft.  
Ceiling Height: 8'-10"



GARAGE | 226 sq.ft.  
Ceiling Height: 7'-10"

