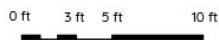
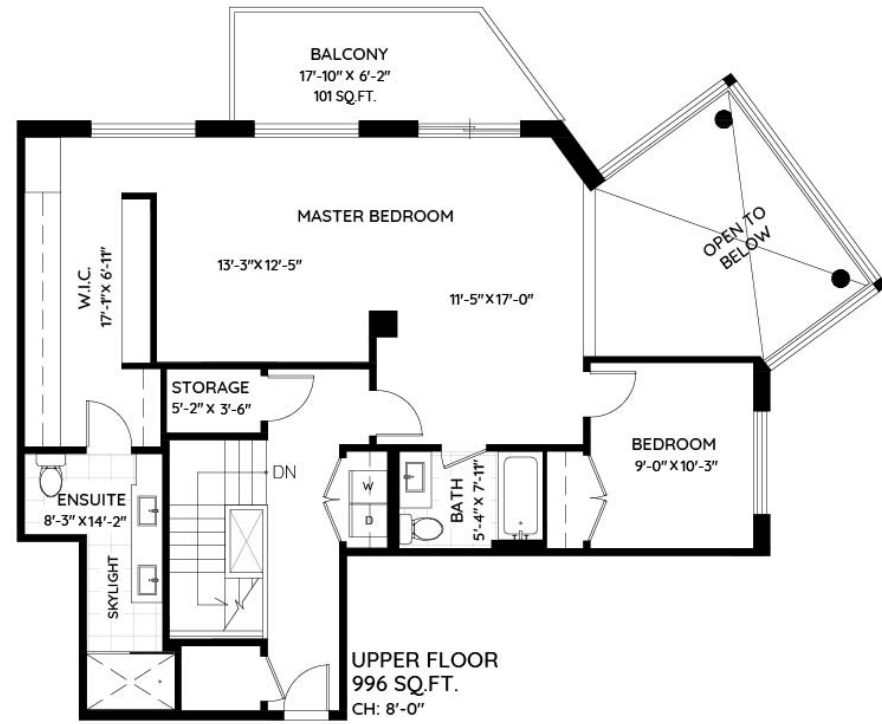
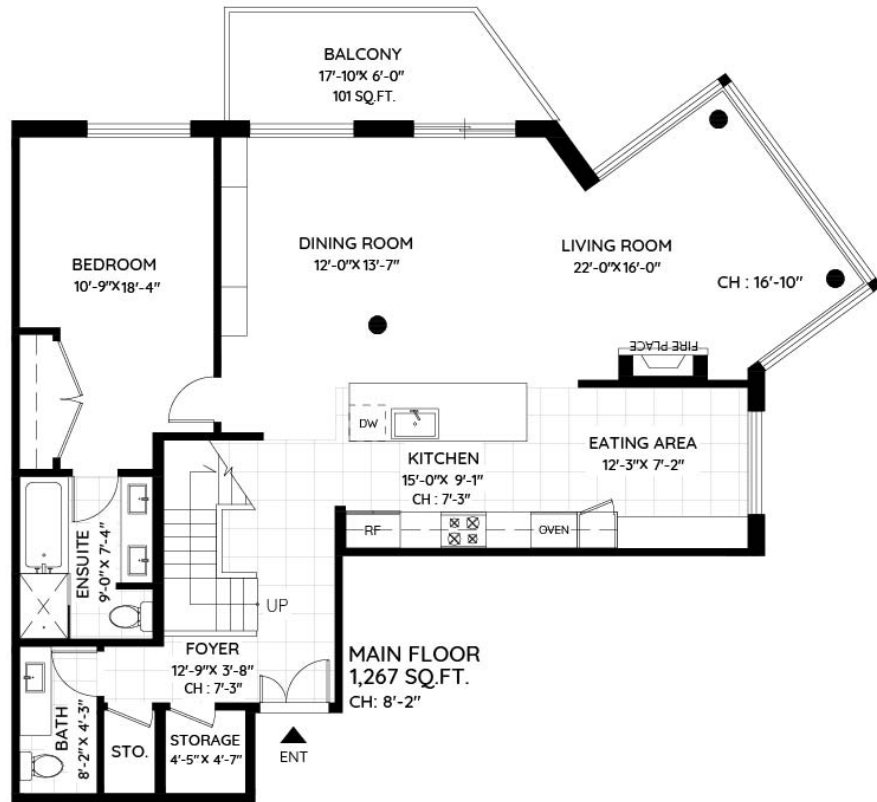


1001 - 683 WEST VICTORIA PARK

NORTH VANCOUVER, BC

MAIN	1,267 SQ.FT.
UPPER	996 SQ.FT.
TOTAL	2,263 SQ.FT.
BALCONY	202 SQ.FT.



The floor plan and the measurements are approximate and are to be used for advertising usage only.
Not suitable for architectural or construction. E&O Insured