



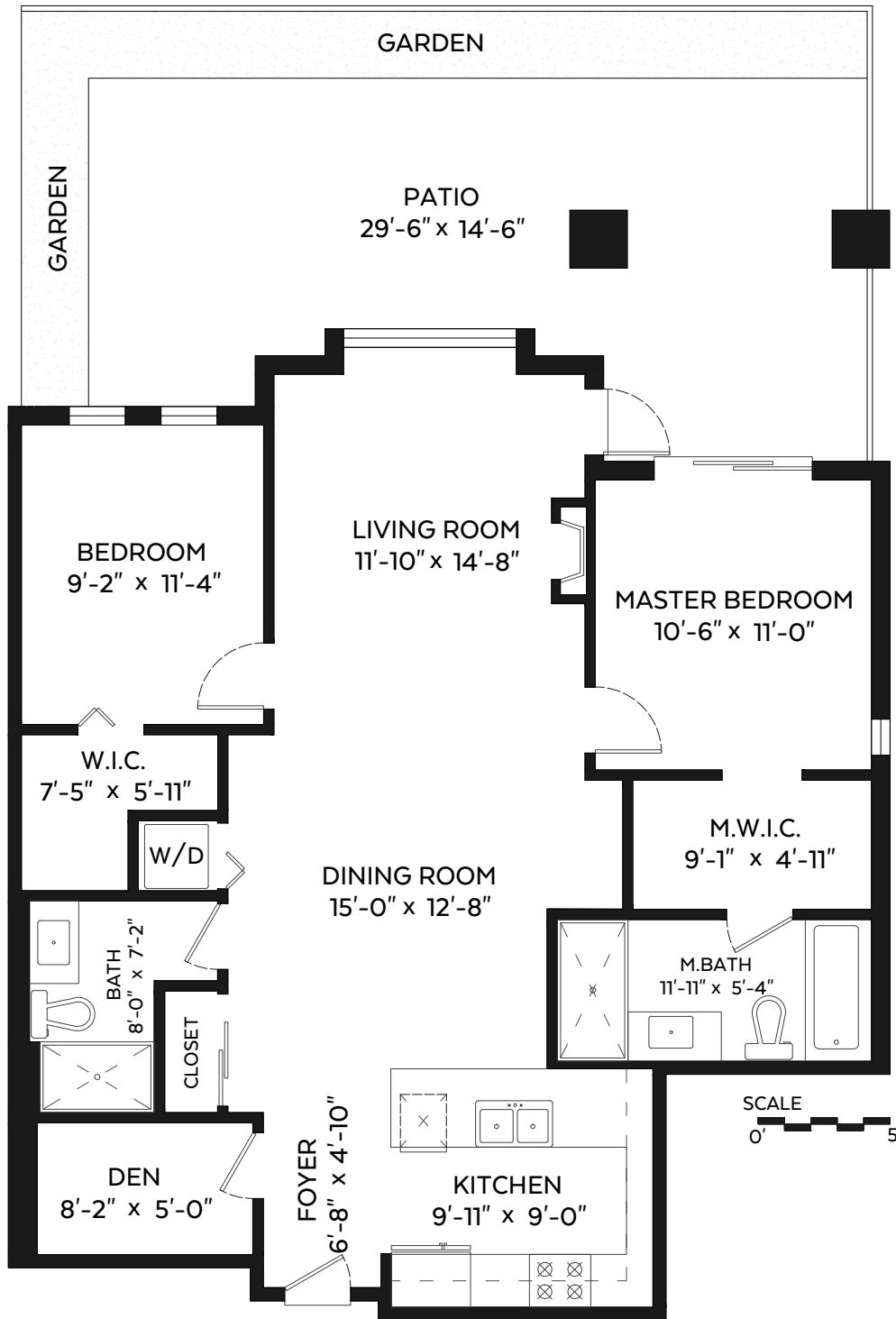
604-377-4551 scott@wallacegreen.ca
SCOTT WALLACE
CARSON GREEN
 604-506-5364 carson@wallacegreen.ca
 www.wallacegreen.ca

#106-265 Ross Drive,
 New Westminster, B.C.

Main Floor: 1,068 sq.ft.

Auxiliary Area

Patio/Garden: 478 sq.ft.



Measured on: March 27, 2017

The floor plan is not suitable for architectural/construction and is covered under E&O. © Excelsior Measuring Inc. 2017. All rights reserved for Excelsior Measuring Inc. Users shall not publish and distribute such material (in whole or in part) and/or incorporate it in other works in any form.

