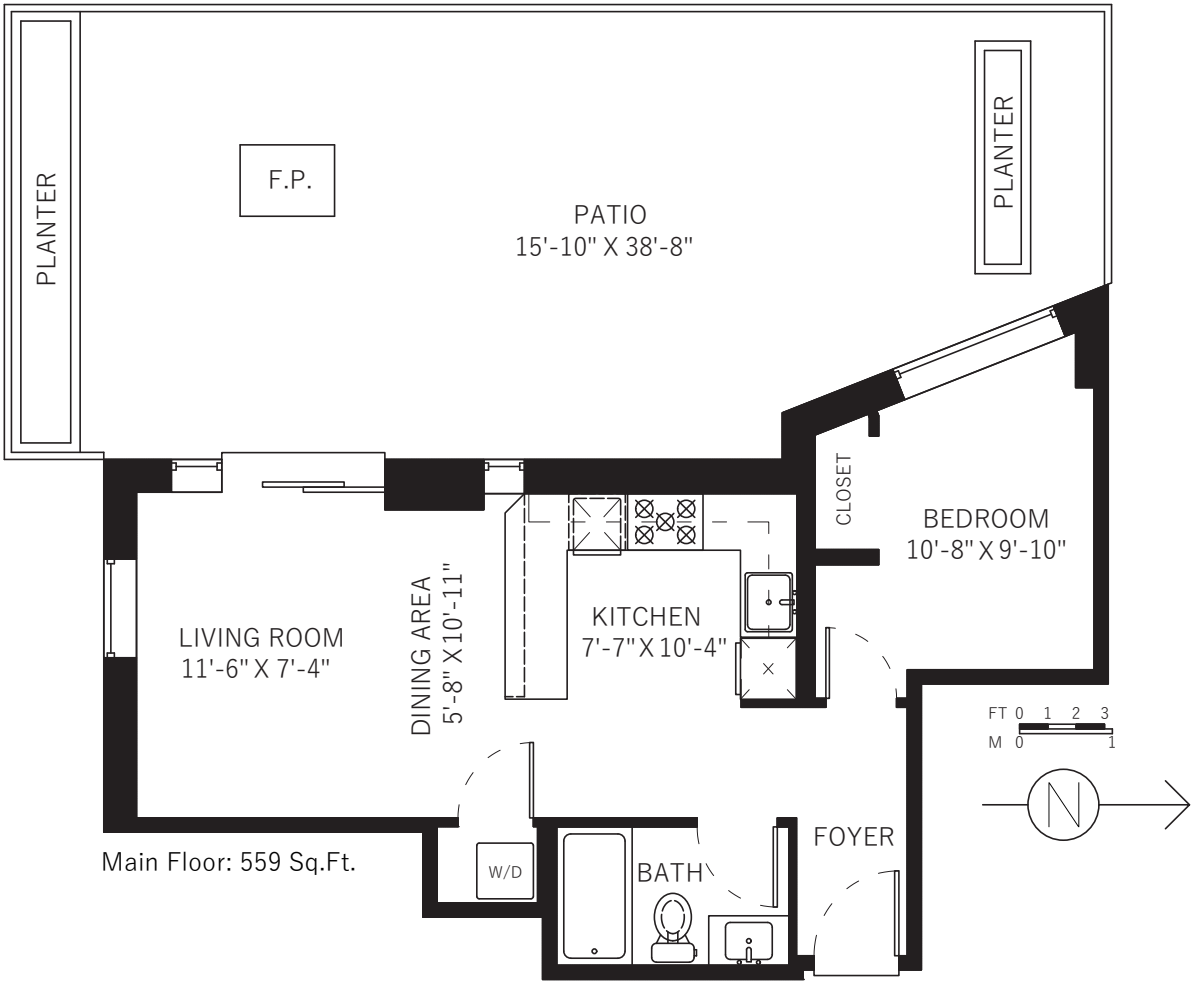


1110-445 W 2ND AVENUE

1110-445 W 2nd Ave
Vancouver, BC

Main Floor	559 SQ.FT.
Patio	583 SQ.FT.



Floor plan not suitable for architectural/construction purposes. ANSI Z765 standard used to calculate square footage. Buyer to verify.



CARSON GREEN AND SCOTT WALLACE

Wallace & Green have a highly sophisticated set of skills in real estate, different from one another but extremely complementary. This diversity allows them to remain connected to the ever-changing market, and best serve their clients. Wallace & Green are committed to helping others reach their real estate goals. They look forward to the opportunity to meet you and earn your business.



CARSON GREEN

604-506-5364
T EAM@WALLACEGREEN.CA
WWW.WALLACEGREEN.CA

SCOTT WALLACE

604-377-4551
T EAM@WALLACEGREEN.CA
WWW.WALLACEGREEN.CA





Price: \$689,000
MLS® No: R2106837

Type: Condo
Living Area: 559 sq. ft.

Bedrooms: 1
Bathrooms: 1

Parking: 1
Built: 2012

This sub-penthouse residence is truly one of a kind. Enjoy heavenly sunsets with SW views of downtown & False Creek from your private, 583 sq.ft terrace with fire pit! Walk or bike to the many area amenities including Olympic Village, sea wall, downtown, Canada Line, Whole Foods etc. This corner home offers nearly 1150 sq.ft of combined indoor/outdoor living space and features a large custom kitchen with upgraded Liebherr refrigerator, Kitchen Island & pot lights, as well as new wide-plank flooring. Built 2012, this particular suite was originally a developer hold back because of its unique design. Incl 1 prime, full size parking and 2 storage lockers. Building features include concierge, professionally equipped gym & party room.

