

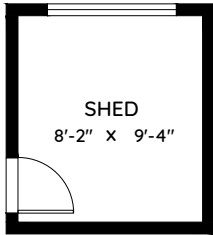
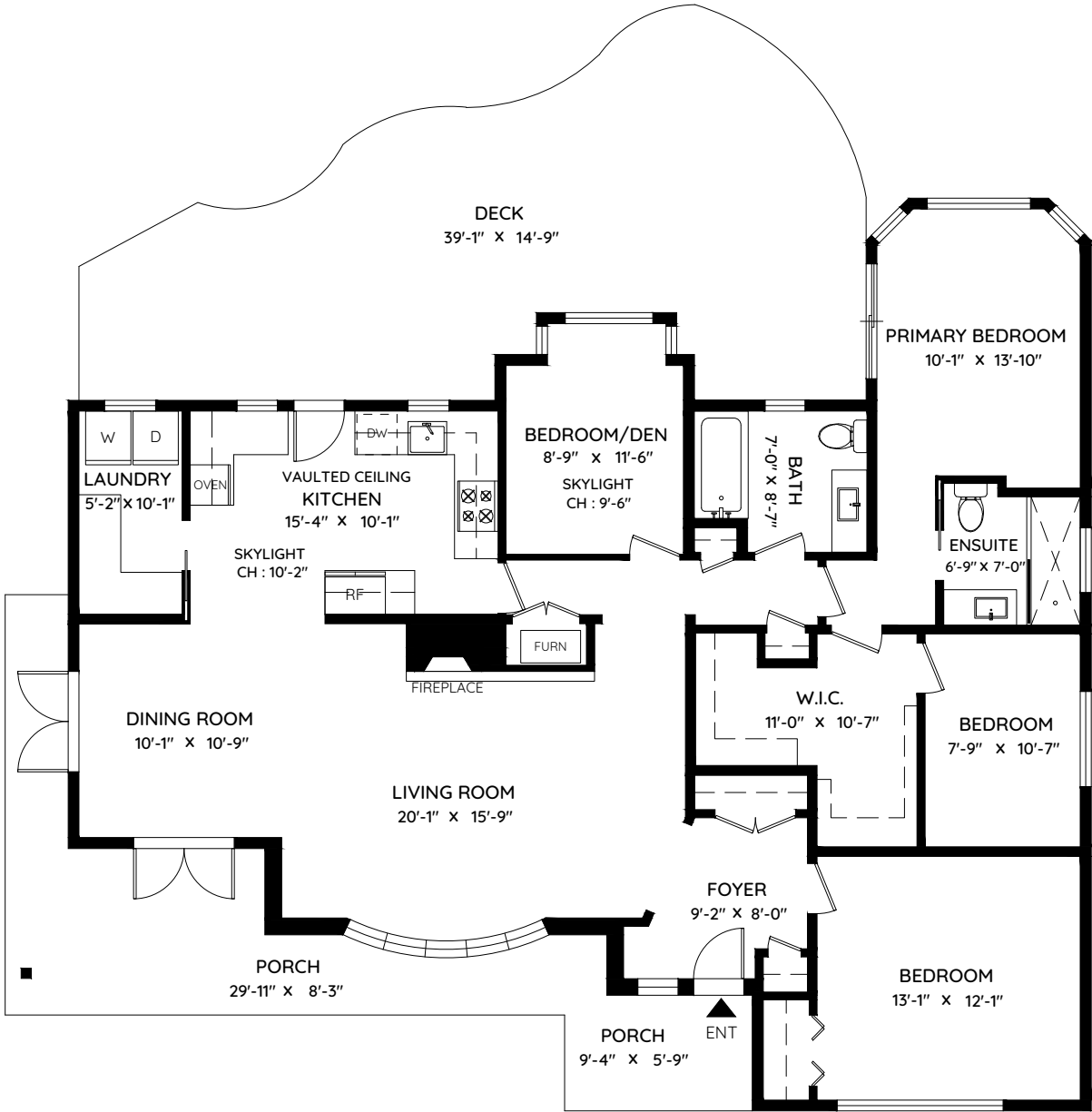
4465 CAPILANO ROAD

NORTH VANCOUVER, BC

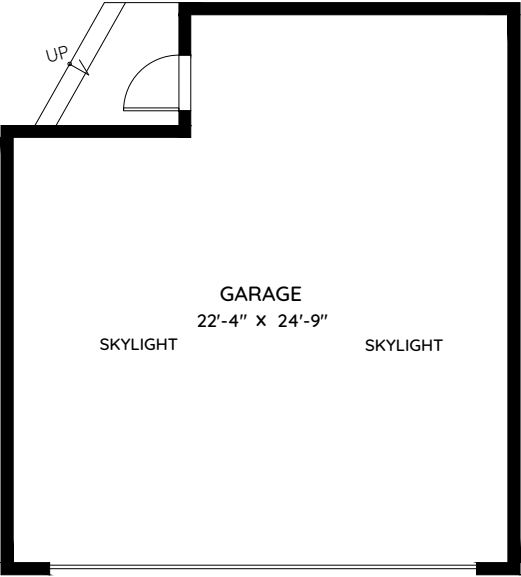
WG
wallacegreen.ca

Carson Green
604.506.5364
carson@wallacegreen.ca

Scott Wallace
604.377.4551
scott@wallacegreen.ca



LIVING AREA	1,630 SQ.FT.
CEILING HEIGHT	8'-0"
GARAGE	560 SQ.FT.
DECK	505 SQ.FT.
PORCH	258 SQ.FT.
SHED	98 SQ.FT.
TOTAL	1,421 SQ.FT.



0 ft 3 ft 5 ft 10 ft

The floor plan and the measurements are approximate within +/- 2% and are to be used for advertising usage only. May include unfinished area. Not suitable for architectural or construction. E&O Insured

keyplan
plan your space

Booked on
the Pixilink App™

