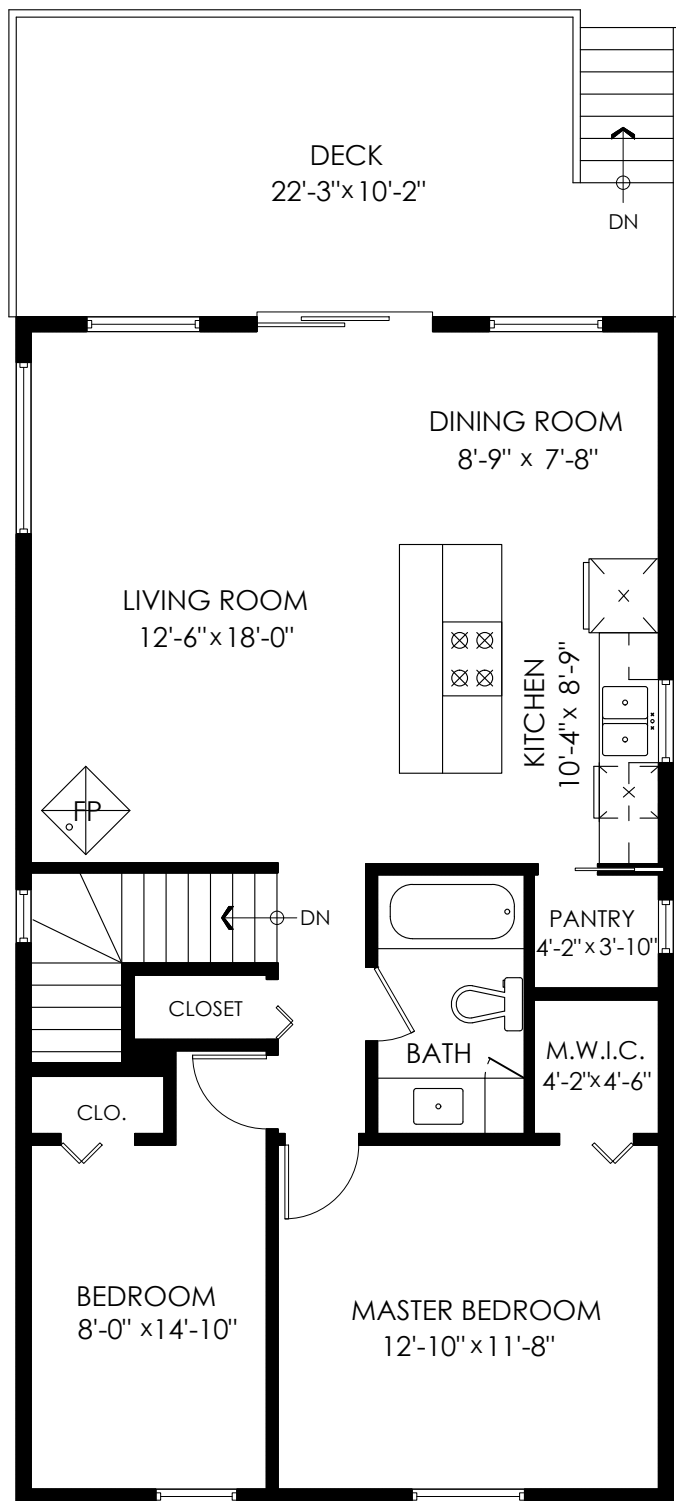


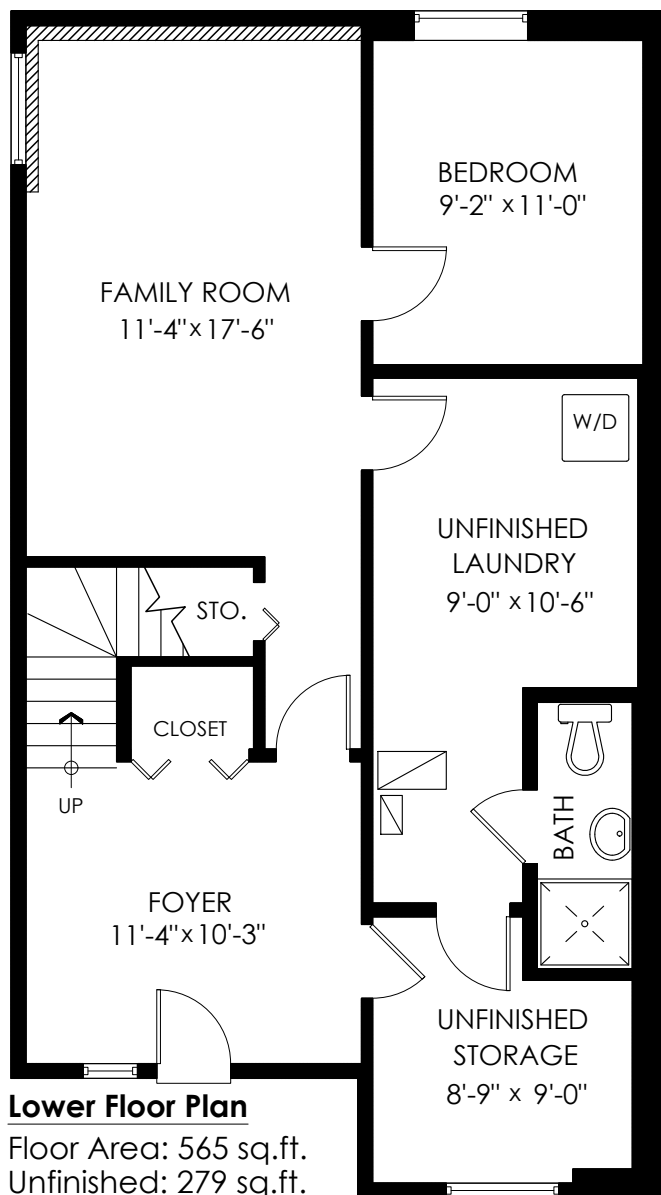
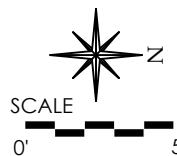
833 Stayte Road White Rock, BC

Main Floor:	892 sq.ft.
Finished Lower Floor:	565 sq.ft.
Sub Total:	1,457 sq.ft.
Unfinished Floor:	279 sq.ft.
Total:	1,736 sq.ft.
Deck:	206 sq.ft.



Main Floor Plan

Floor Area: 892 sq.ft.
Ceiling Height: 8'



Lower Floor Plan

Floor Area: 565 sq.ft.
Unfinished: 279 sq.ft.
Ceiling Height: 8'



INFO@COTALA.COM
(604) 514-9589
WWW.COTALA.COM



Houses:

Total square footage is calculated to the outside of exterior walls.

Room sizes are dimensioned to the inside of the walls. This is because you need to know what you can fit in that room. When you add up the total of the room sizes it will not equal the total square footage of the property. This method of adding up room sizes will not account for wall thickness, interior hallways, exterior wall thickness, closets and many other areas that are included in total sqft.

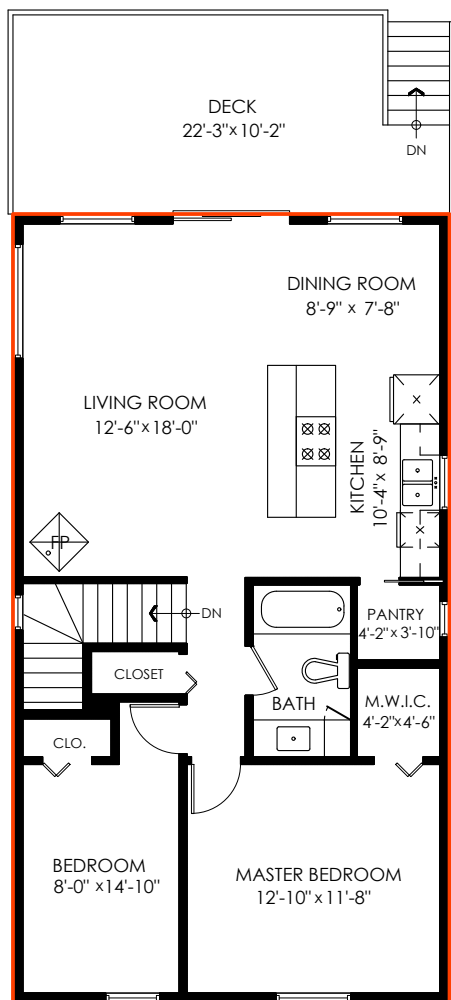
Any space that is not suitable for year-round use or has a ceiling height of less than 4 feet will not be considered living space. An example of this includes a deck, garage or attic. If there isn't heat, insulation or room for an adult to stand, then it will not be included in the living space.

Cantilevered fireplaces, chimneys and plant windows are also not considered living space.

Included in the living space will be the measurements for stair treads for the floor they service as well as the space under the lowest floor's stairs.

Areas open to the floor below (also known as double height ceilings) are not considered living space because there is no floor.

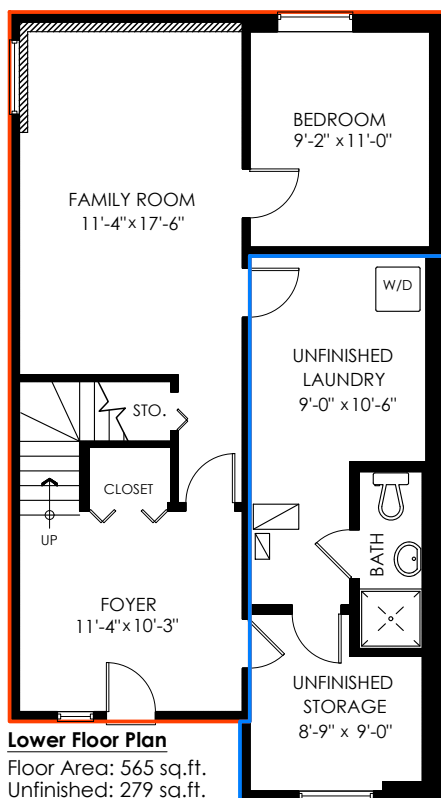
833 Stayte Road White Rock, BC



Main Floor Plan

Floor Area: 892 sq.ft.
Ceiling Height: 8'

SCALE
0' 5'



Lower Floor Plan

Floor Area: 565 sq.ft.
Unfinished: 279 sq.ft.
Ceiling Height: 8'

Main Floor: 892 sq.ft.
Finished Lower Floor: 565 sq.ft.
Sub Total: 1,457 sq.ft.

Unfinished Floor: 279 sq.ft.
Total: 1,736 sq.ft.

Deck: 206 sq.ft.

PERMITS | RESIDENTIAL DESIGN | INTERIOR DESIGN | MEASURING

Draft On Site Services Inc. (604) 876-3738 | info@DraftOnSite.com | www.DraftOnSite.com