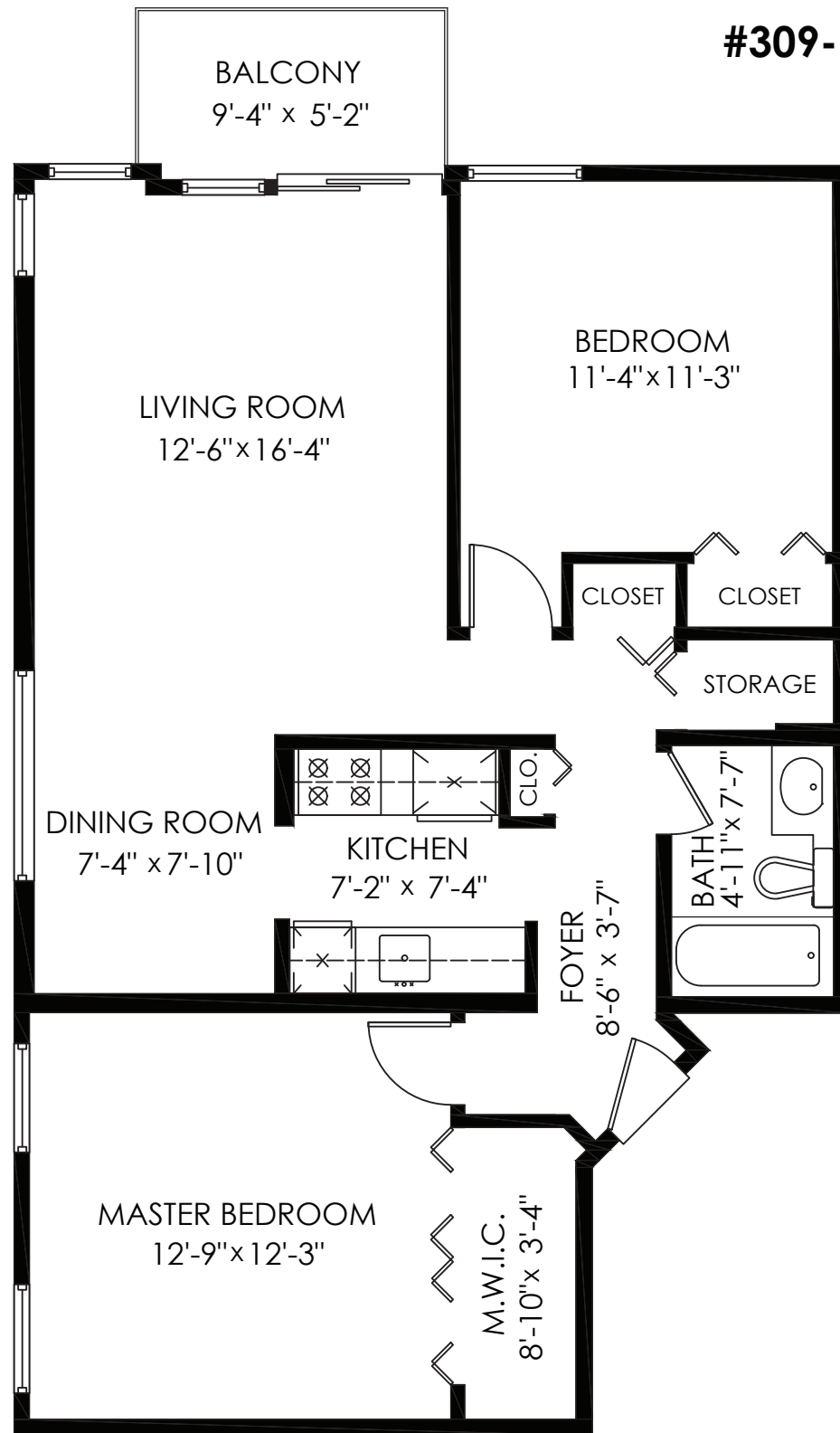


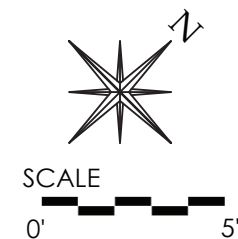
DANIELLE HRASKO

604-725-9894 DANIELLE@WHITEROCKLIFE.CA
WWW.WHITEROCKLIFE.CA

#309-1870 Southmere Cres E, Surrey



Floor Area: 880 sq.ft.
Balcony: 48 sq.ft.
Ceiling Height: 8'-0"



Measuring, Design & Permits | 604-876-3738

E&O Insured for \$1,000,000. Total square foot calculated to gross unit area SQFT based on interior measurements to exterior walls, not taken from original blueprints, may include unfinished area. www.DraftOnSite.com

The enclosed information while deemed to be correct, is not guaranteed.
This communication is not intended to solicit properties already listed for sale.

Produced and printed by  www.cotala.com

309 - 1870 E SOUTHMERE CRESCENT, SURREY



DANIELLE HRASKO

604-725-9894 • DANIELLE@WHITEROCKLIFE.CA

LOVE WHERE YOU LIVE

WWW.WHITEROCKLIFE.CA



309 - 1870 E Southmere Crescent, Surrey



Top floor, corner unit PENTHOUSE in popular SOUTHGROVE. 2 huge bedrooms and 1 large bathroom. Updated kitchen and an oversized living room large enough for all your furniture. Lots of windows make this home light and bright. Nothing to do in this worry free building which has been fully Rain Screened and features new Energy Efficient Windows and Doors, New Balconies and Railings, and a long lasting metal roof. Fantastic outdoor pool and recreation area. Rentals allowed and one small pet permitted. A short stroll to Semiahmoo Mall, transit, the library, and all the shopping and services in White Rock. Your new home is waiting, ready to move in!



COMPLIMENTS OF
Danielle Hrasko



Style	Penthouse
Maint. Fee	\$299.65
Size	880 sf
Bedrooms	2
Bathrooms	1