

#90-15833 26 Ave, Surrey

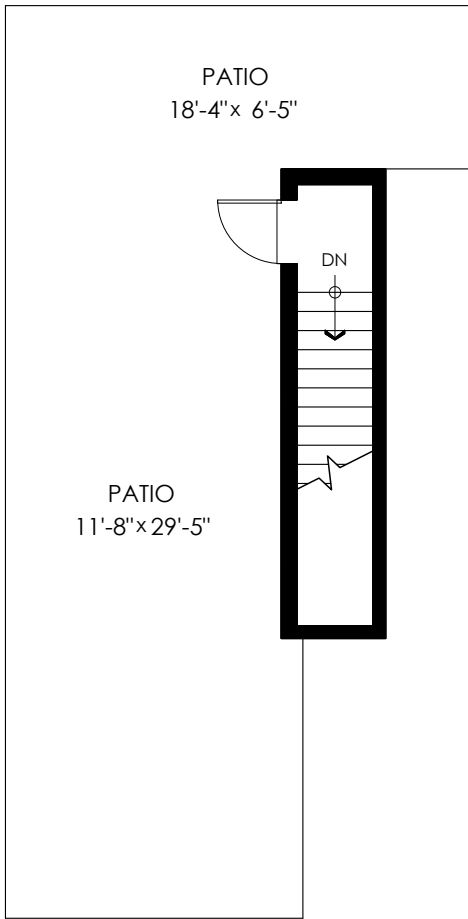
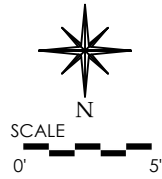


Danielle Hrasko 604-725-9894

danielle@whiterocklife.ca | www.whiterocklife.ca

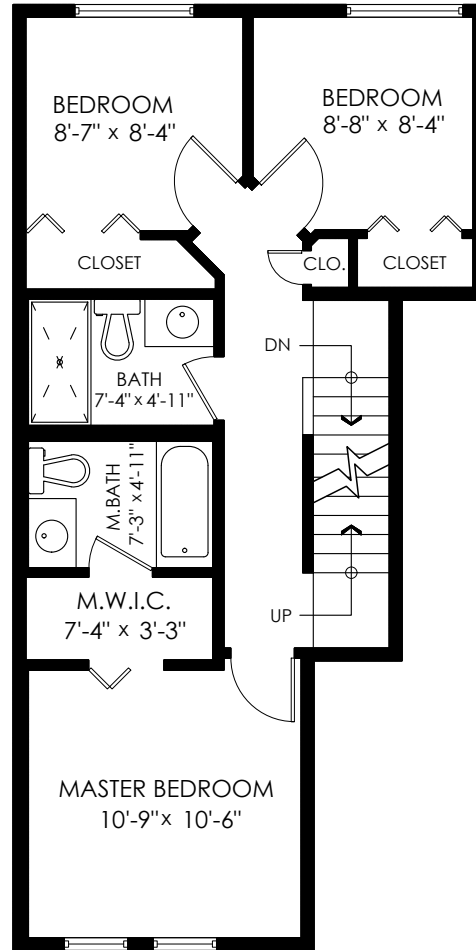
Main Floor: 563 sq.ft.
 Upper Floor: 566 sq.ft.
 Top Floor: 76 sq.ft.
 Lower Floor: 106 sq.ft.
Total: 1,311 sq.ft.

Garage: 514 sq.ft.
 Patio: 445 sq.ft.
 Balcony: 62 sq.ft.
Total Extras: 1,021 sq.ft.



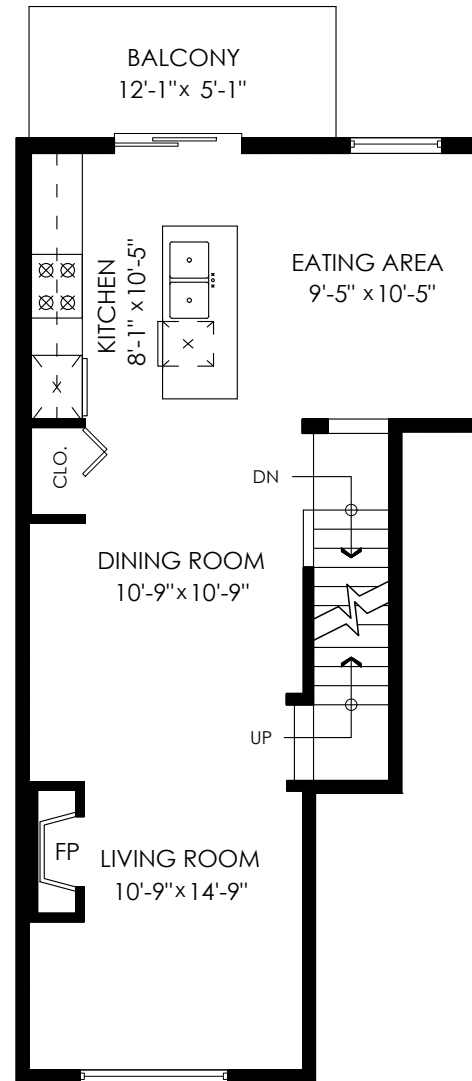
Roof Top Plan

Floor Area: 76 sq.ft.
 Patio Area: 445 sq.ft.



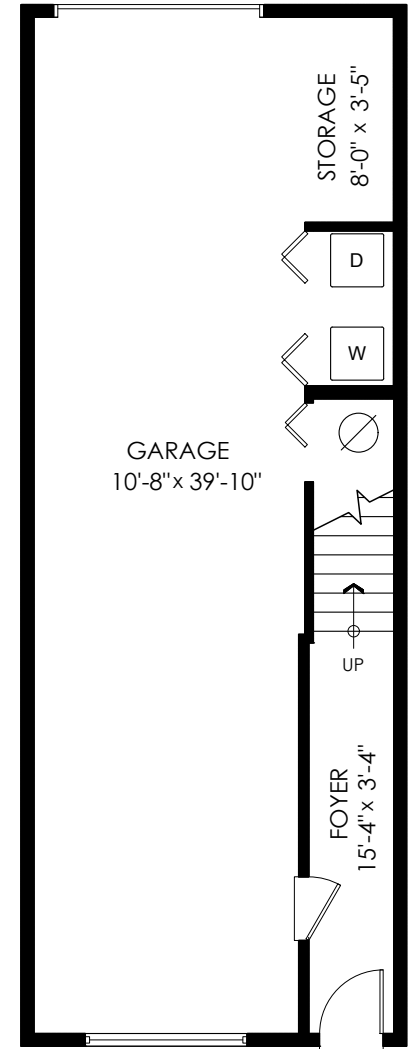
Upper Floor Plan

Floor Area: 566 sq.ft.
 Ceiling Height: 8'-1"



Main Floor Plan

Floor Area: 563 sq.ft.
 Ceiling Height: 8'



Lower Floor Plan

Floor Area: 106 sq.ft.
 Ceiling Height: 7'-11"

Measuring, Design & Permits | 604-876-3738





INFO@COTALA.COM
 (604) 514-9589
 WWW.COTALA.COM

Houses:

Total square footage is calculated to the outside of exterior walls.

Room sizes are dimensioned to the inside of the walls. This is because you need to know what you can fit in that room. When you add up the total of the room sizes it will not equal the total square footage of the property. This method of adding up room sizes will not account for wall thickness, interior hallways, exterior wall thickness, closets and many other areas that are included is total sqft.

Any space that is not suitable for year-round use or has a ceiling height of less than 4 feet will not be considered living space. An example of this includes a deck, garage or attic. If there isn't heat, insulation or room for an adult to stand, then it will not be included in the living space.

Cantilevered fireplaces, chimneys and plant windows are also not considered living space.

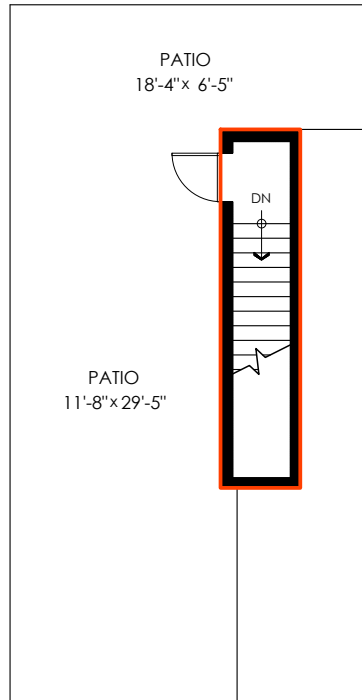
Included in the living space will be the measurements for stair treads for the floor they service as well as the space under the lowest floor's stairs.

Areas open to the floor below (also known as double height ceilings) are not considered living space because there is no floor.

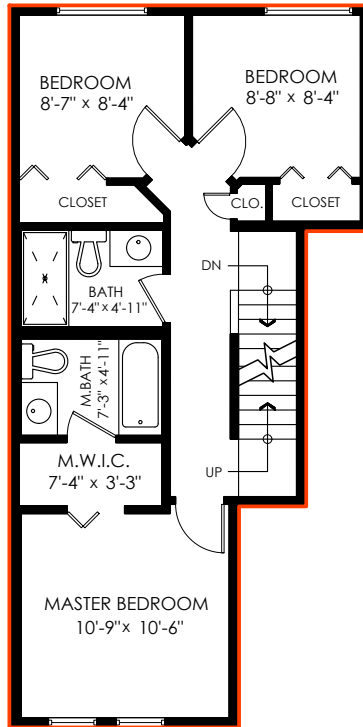
Main Floor:	563 sq.ft.
Upper Floor:	566 sq.ft.
Top Floor:	76 sq.ft.
Lower Floor:	106 sq.ft.
Total:	1,311 sq.ft.

#90-15833 26 Ave, Surrey

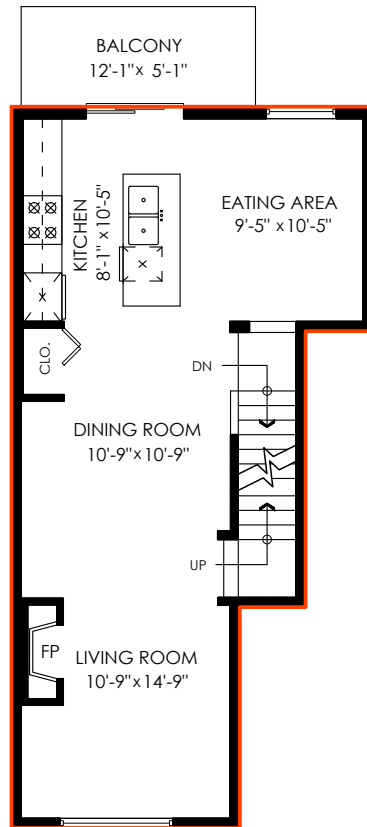
Garage:	514 sq.ft.
Patio:	445 sq.ft.
Balcony:	62 sq.ft.
Total Extras:	1,021 sq.ft.



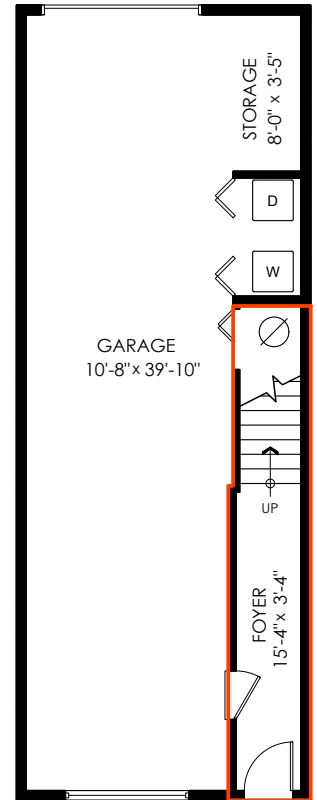
Roof Top Plan
 Floor Area: 76 sq.ft.
 Patio Area: 445 sq.ft.



Upper Floor Plan
 Floor Area: 566 sq.ft.
 Ceiling Height: 8'-1"



Main Floor Plan
 Floor Area: 563 sq.ft.
 Ceiling Height: 8'



Lower Floor Plan
 Floor Area: 106 sq.ft.
 Ceiling Height: 7'-11"

PERMITS | RESIDENTIAL DESIGN | INTERIOR DESIGN | MEASURING

Draft On Site Services Inc. (604) 876-3738 | info@DraftOnSite.com | www.DraftOnSite.com