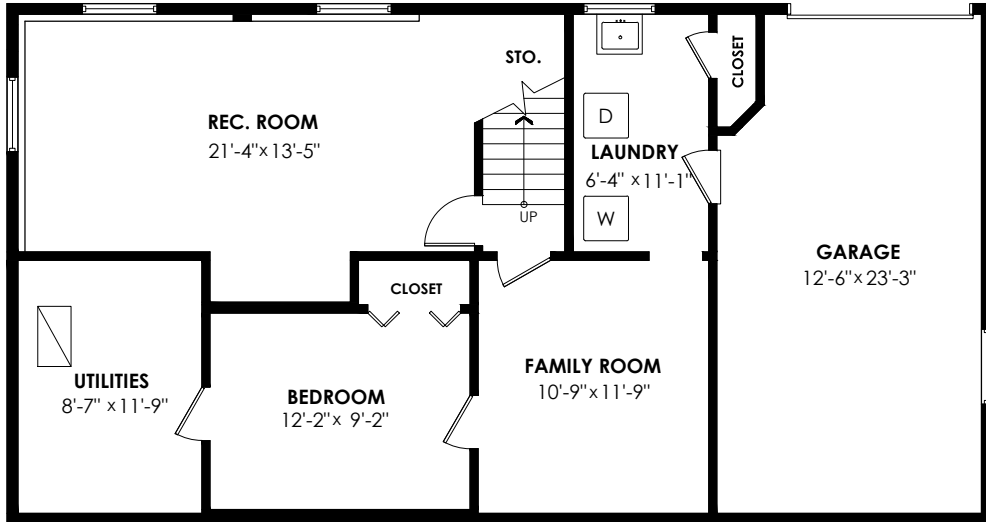


692 Blue Mountain Street, Coquitlam

Lower Floor: 815sq. ft. Porch: 25sq. ft.
 Main Floor: 1,165sq. ft. Carport: 385sq. ft.
Total Livable: 1,980 sq. ft. Total Extras: 410 sq. ft.
 Garage: 299sq. ft.
Grand Total: 2,279 sq. ft.

Lower Floor Plan

Floor Area: 815 sq.ft.
 Ceiling Height: 7'-6"



Main Floor Plan

Floor Area: 1165 sq.ft.
 Ceiling Height: 8'

