

2415 King Albert Avenue, Coquitlam

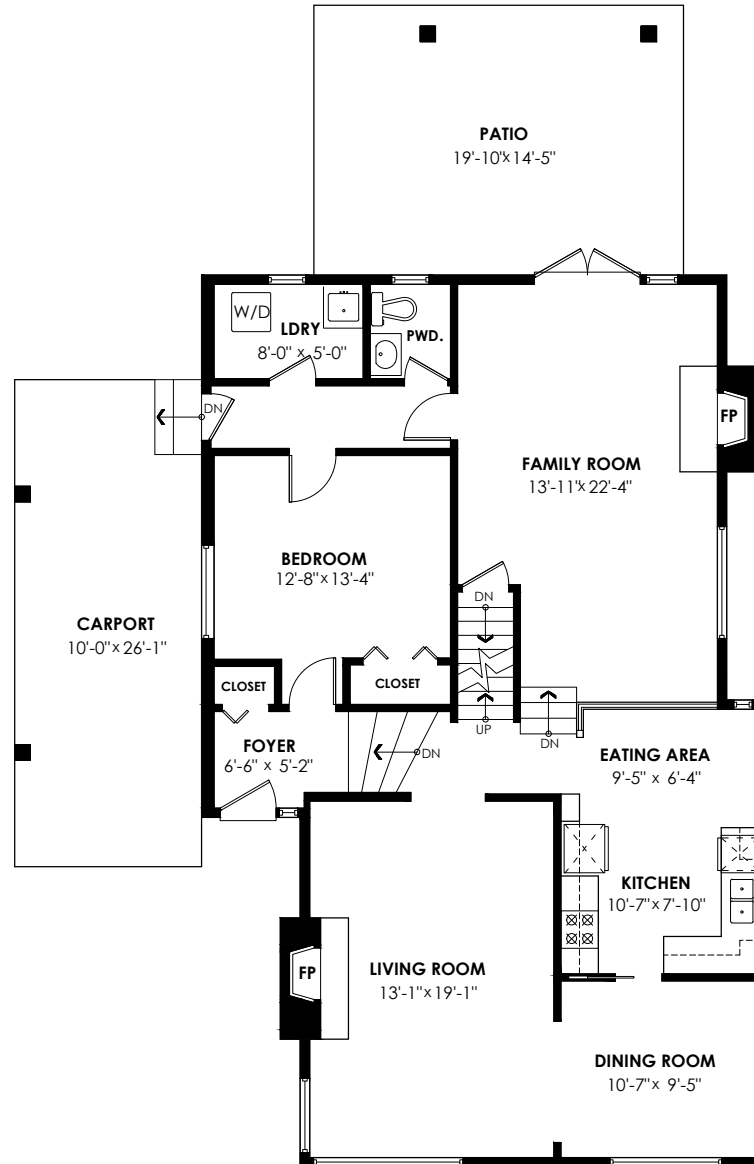
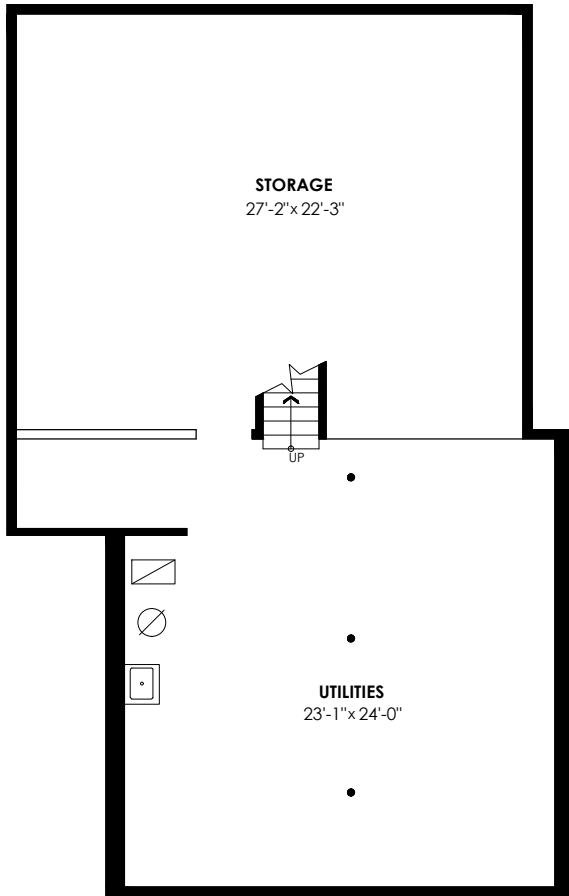
Main Floor: 1,299 sq. ft. Patio: 547 sq. ft.
 Upper Floor: 654 sq. ft. Unfin Bsmt : 1,296 sq. ft.
Total Livable: 1,953 sq. ft. Total Extras: 1,843 sq. ft.

Main Floor Plan

Floor Area: 1299 sq.ft.
 Ceiling Height: 8'

Unfinished Basement

Floor Area: 1296 sq.ft.
 Ceiling Height: 7'



Upper Floor Plan

Floor Area: 654 sq.ft.
 Ceiling Height: 8'

