

# AXFORD

REAL ESTATE & PROPERTY MANAGEMENT GROUP



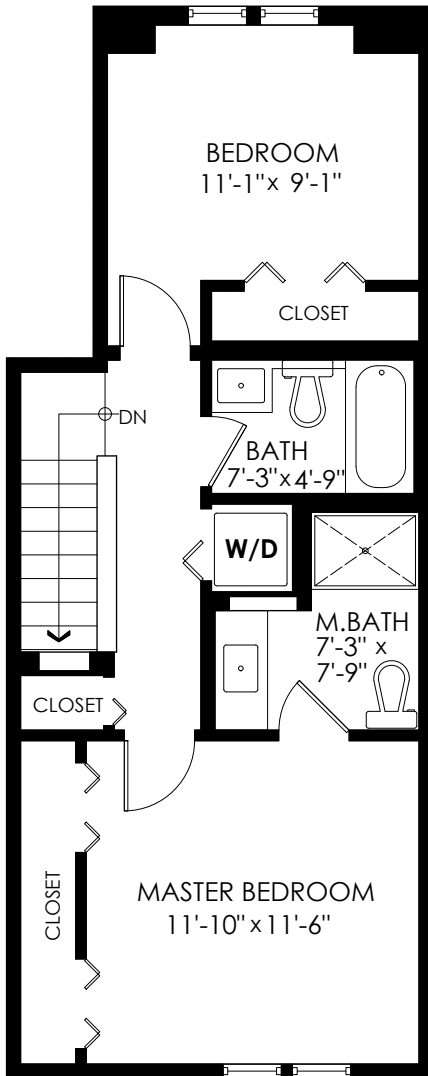
778-355-0116  
 info@theaxfords.com  
 www.theaxfords.com

## 32-1320 Riley St Coquitlam

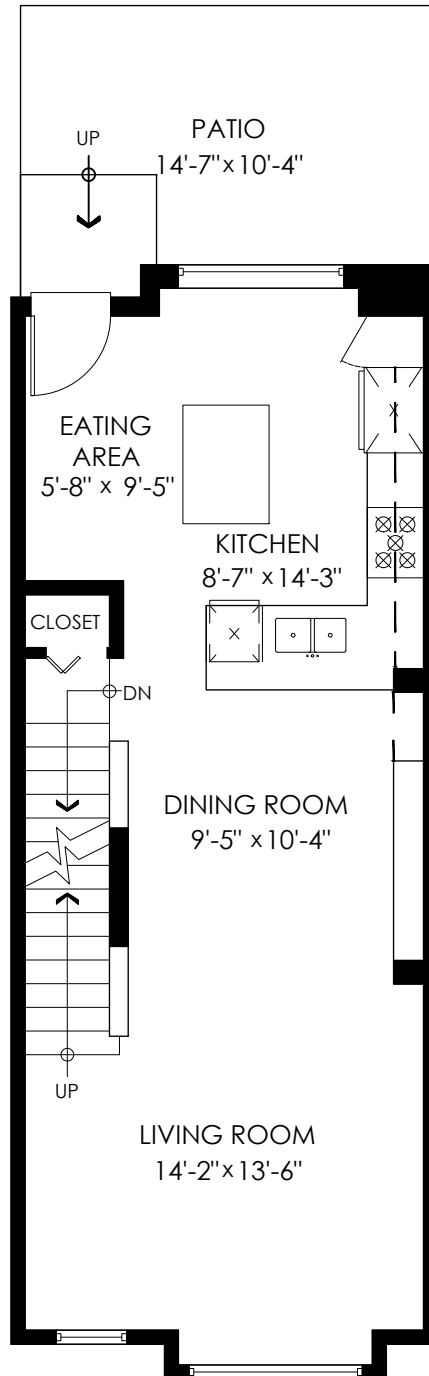
Main Floor: 587 sq.ft.  
 Upper Floor: 540 sq.ft.  
 Entry Floor: 127 sq.ft.  
**Total Livable: 1,254 sq.ft.**

Garage: 446 sq.ft.  
**Grand Total: 1,700 sq.ft.**

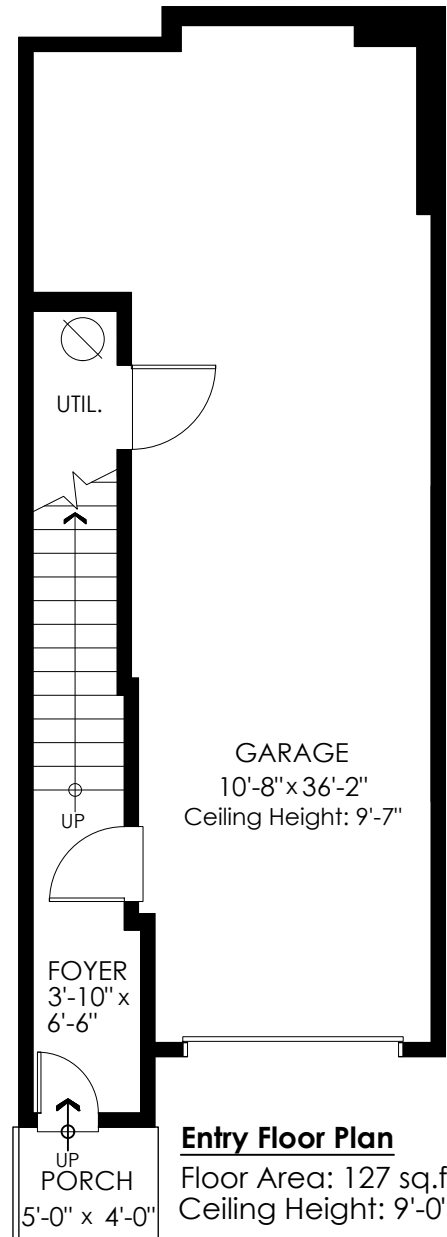
Patio: 139 sq.ft.  
 Porch: 20 sq.ft.  
**Total Extras: 159 sq.ft.**



**Upper Floor Plan**  
 Floor Area: 540 sq.ft.  
 Ceiling Height: 8'-0"



**Main Floor Plan**  
 Floor Area: 587 sq.ft.  
 Ceiling Height: 9'-0"



**Entry Floor Plan**  
 Floor Area: 127 sq.ft.  
 Ceiling Height: 9'-0"



cotala

E&O Insured. Total square foot calculated to gross unit area. SQFT based on interior measurements to exterior walls, not taken from original blueprints, may include unfinished area. This is for marketing purposes only and is not intended for architectural/construction use. All details, sizes & placements should be considered approximate within +/- 2% tolerance.

MEASURED ON: (2022-10-11) info@pixlworks.com www.pixlworks.com 604.329.5788

