

1904 Bowman Avenue, Coquitlam

Lower Floor: 2,420 sq. ft.

Main Floor: 2,462 sq. ft.

Total Livable: 4,882 sq. ft.

Patio: 1,867 sq. ft.

Sunroom: 237 sq. ft.

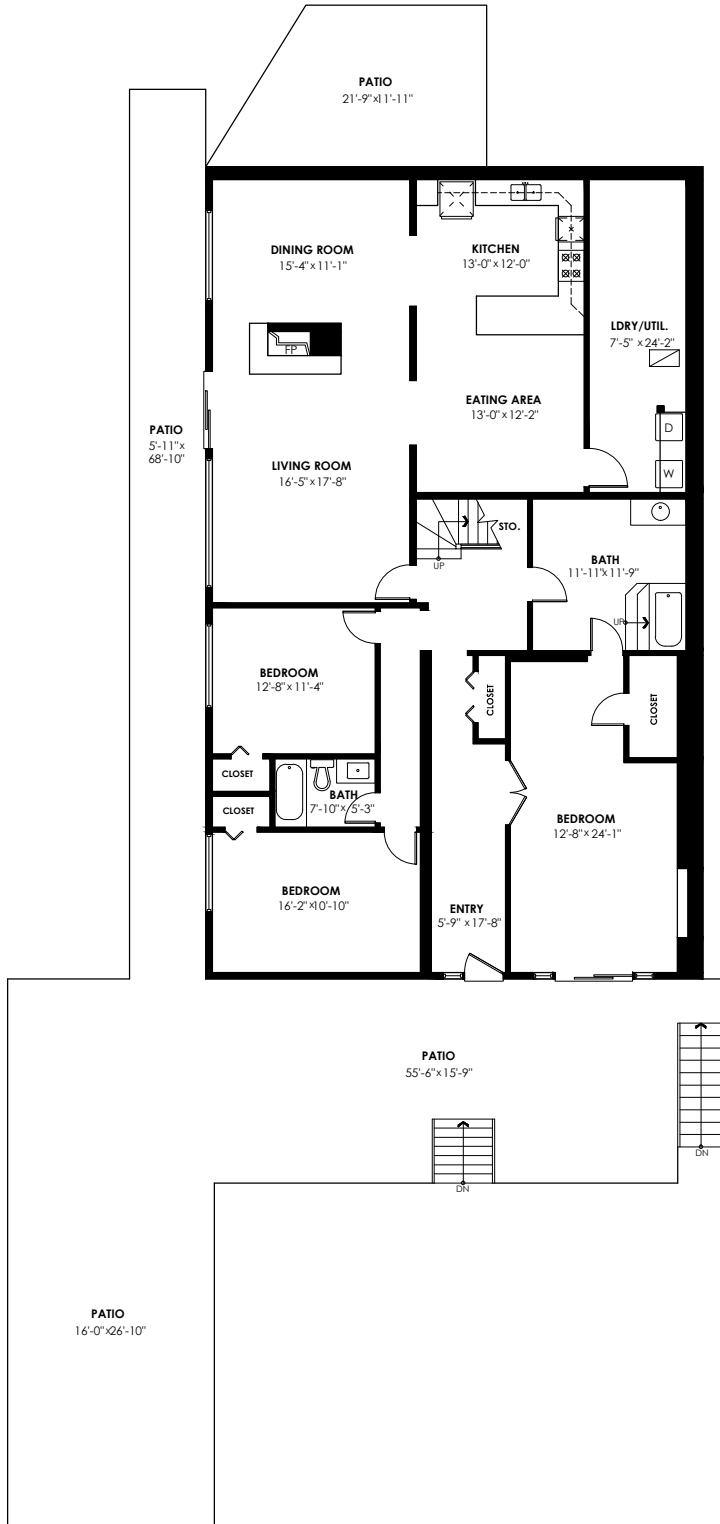
Shed: 213 sq. ft.

Deck: 1,541 sq. ft.

Total Extras: 3,858 sq. ft.

Lower Floor Plan

Floor Area: 2420 sq.ft.
Ceiling Height: 7'-7"



Main Floor Plan

Floor Area: 2462 sq.ft.
Ceiling Height: 8'-11"

