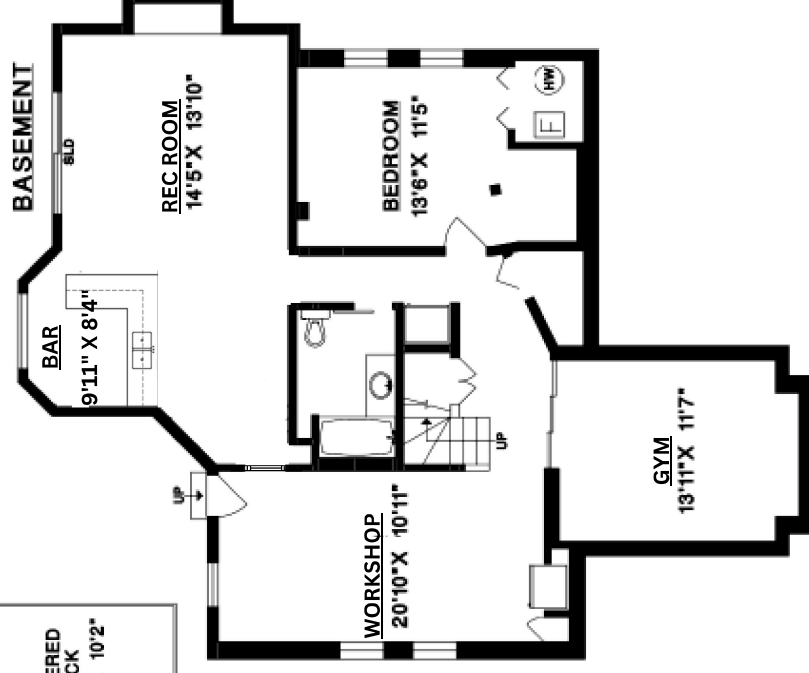
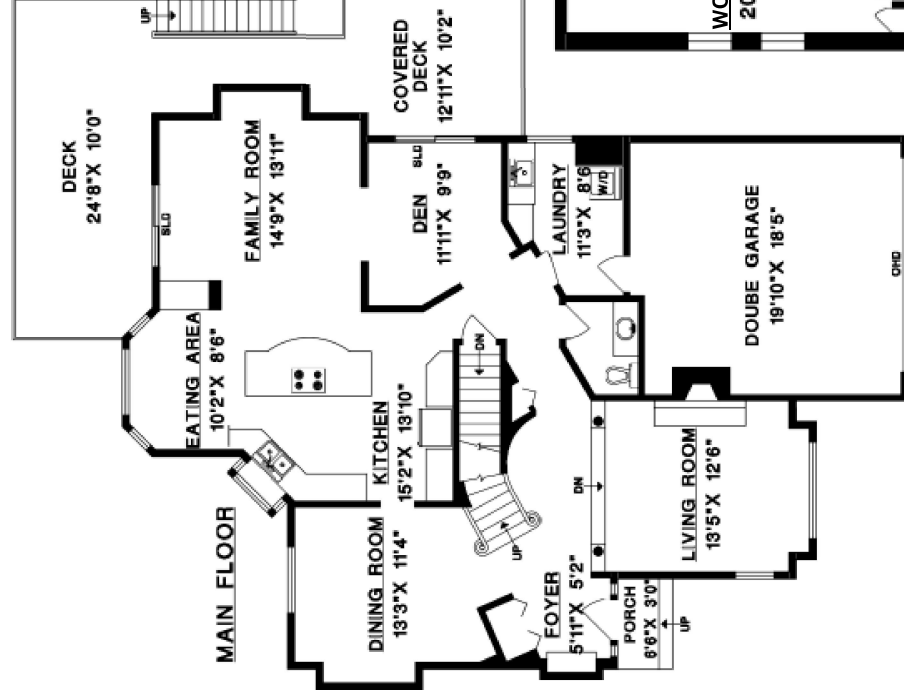
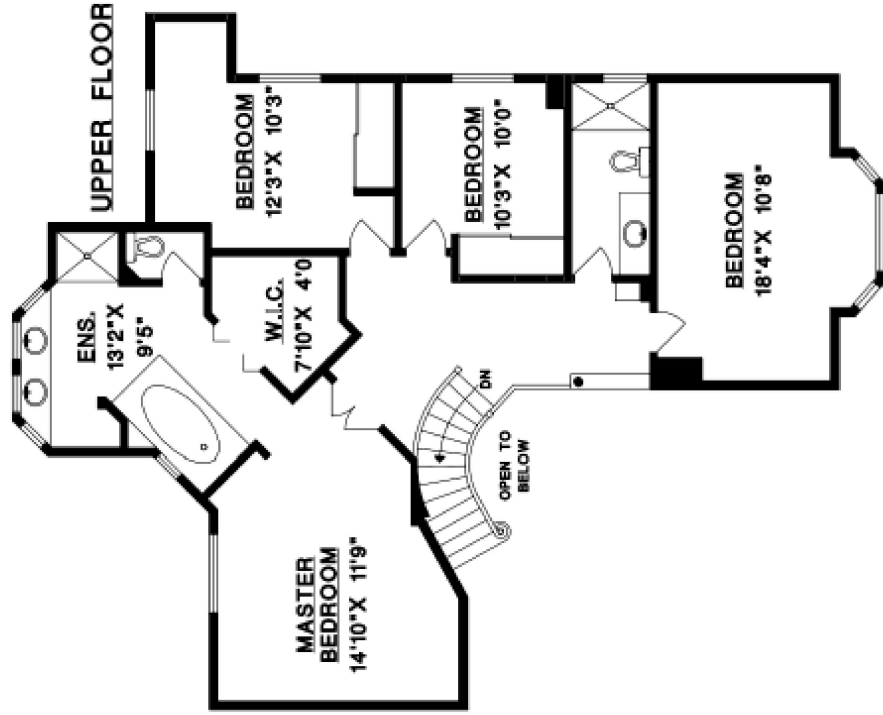


578 Clearwater Way, Coquitlam

Upper Floor: 1,314 sq. ft. Garage: 380 sq. ft.
 Main Floor: 1,463 sq. ft. Deck: 437 sq. ft.
 Basement: 1,426 sq. ft. Porch: 20 sq. ft.
 Total Livable: 4,203 sq. ft.



SCALE