

# 302-2429 Hawthorne Avenue, Port Coquitlam

**Axford** real estate

778-355-0116

info@axfordrealestate.ca

www.axfordrealestate.ca

Axford Real Estate

FLOOR AREA FINISHED:

Main Floor: 770 sq. ft.

FINISHED TOTAL: 770 sq. ft.

Deck: 106 sq. ft.

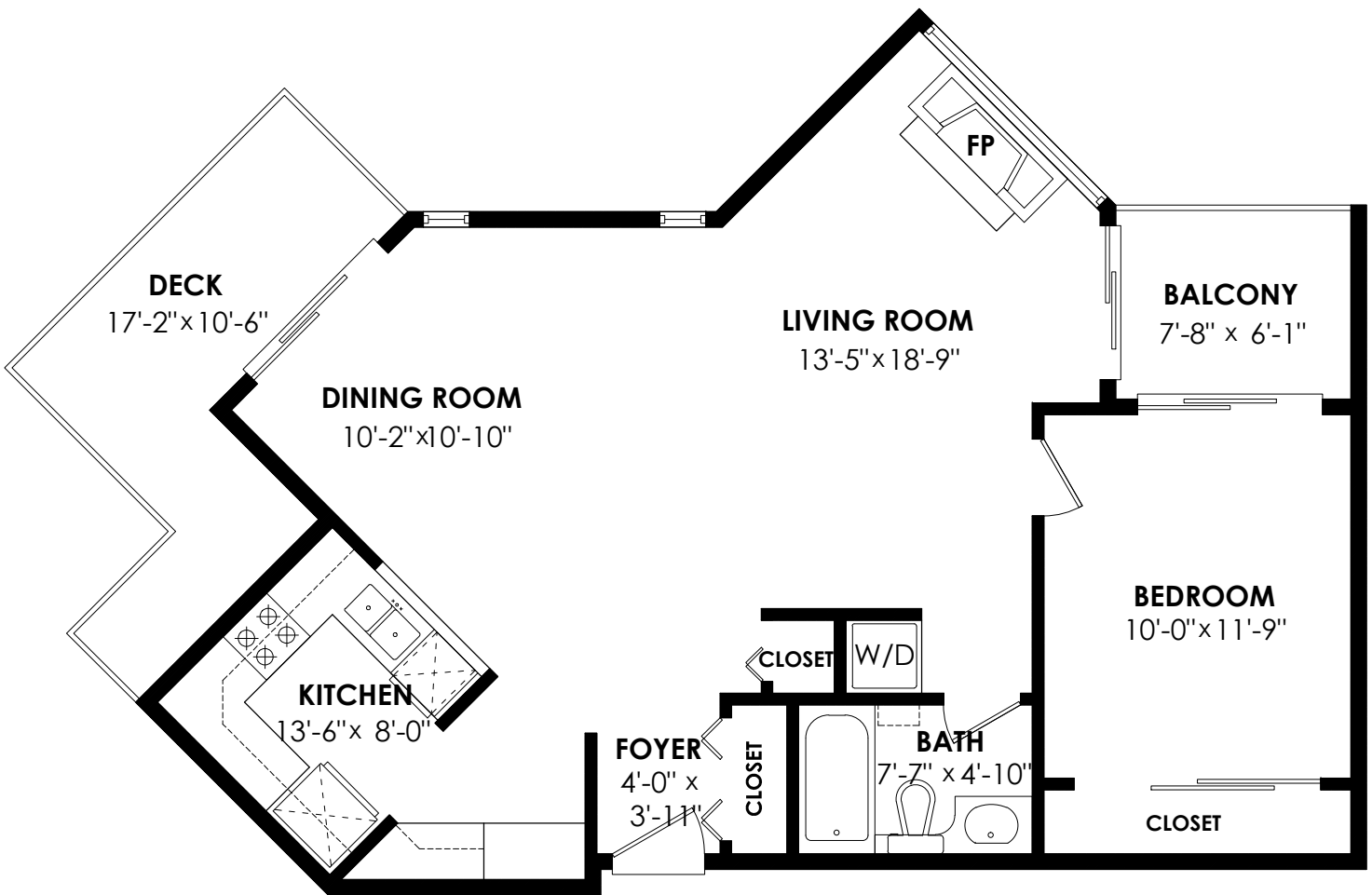
Balcony: 51 sq. ft.

EXTRAS: 157 sq. ft.

## Main Floor Plan

Floor Area: 770 sq.ft.

Ceiling Height: 8'



**cotala**

E&O Insured. For advertising purposes only. Not intended for architectural or construction use. Floorplan and measurements are approximate within +/- 2% tolerance.