

AXFORD

REAL ESTATE & PROPERTY MANAGEMENT GROUP

778-355-0116

info@theaxfords.com

www.theaxfords.com

Royal LePage Sterling Realty

1404-301 Capilano Road, Port Moody

Main Floor: 1,115 sq. ft.

Balcony: 66 sq. ft.

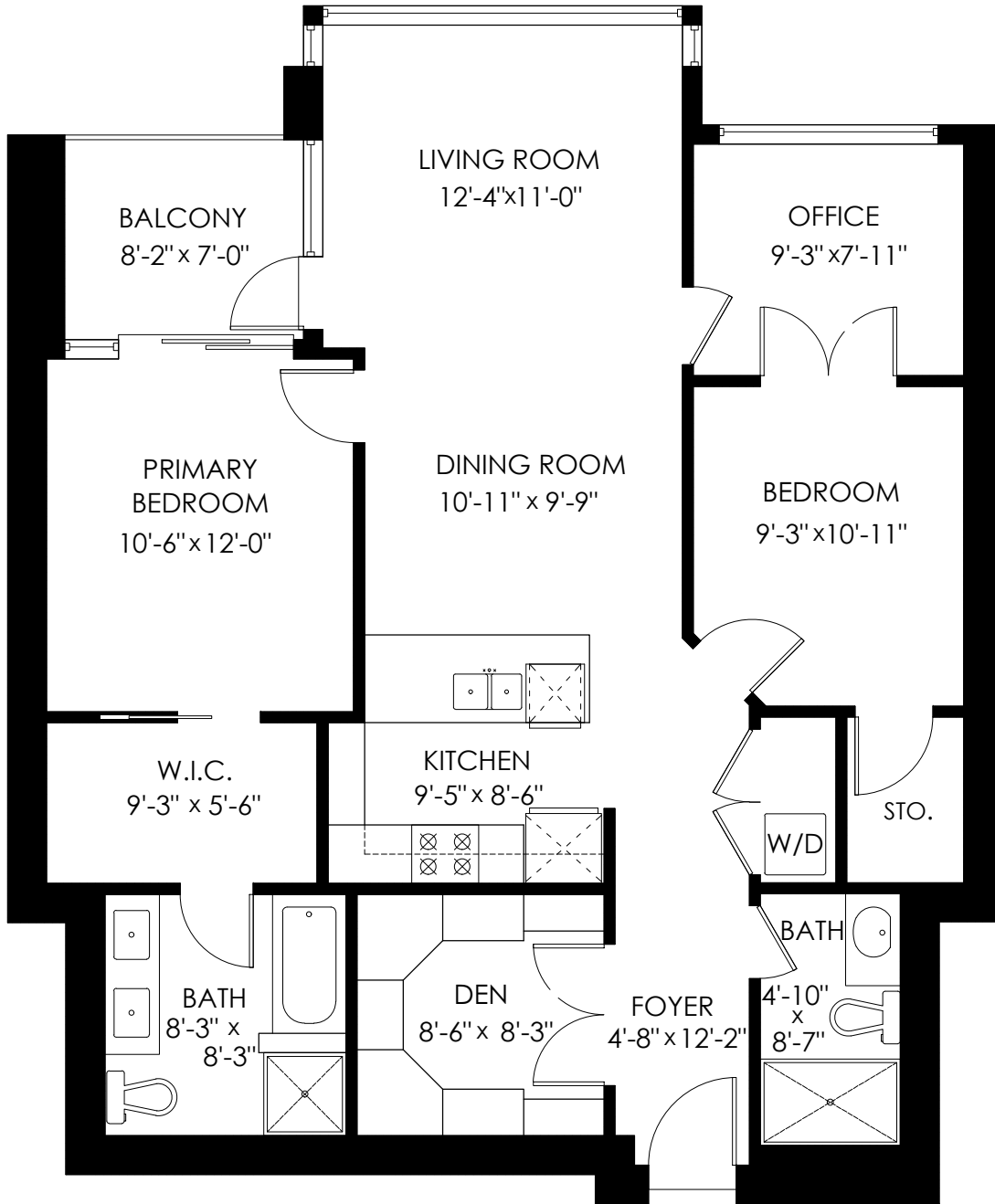
Floor Area: 1,115 sq. ft.

Total Extras: 66 sq. ft.

Main Floor Plan

Floor Area: 1115 sq.ft.

Ceiling Height: 8'-7"



SCALE

