

778-355-0116

info@theaxfords.com

www.theaxfords.com

Royal LePage Sterling Realty

2233 Lorraine Ave, Coquitlam

Lower Floor: 1,138sq. ft.

Main Floor: 1,259sq. ft.

Total Livable: 2,397 sq. ft.

Deck: 211sq. ft.

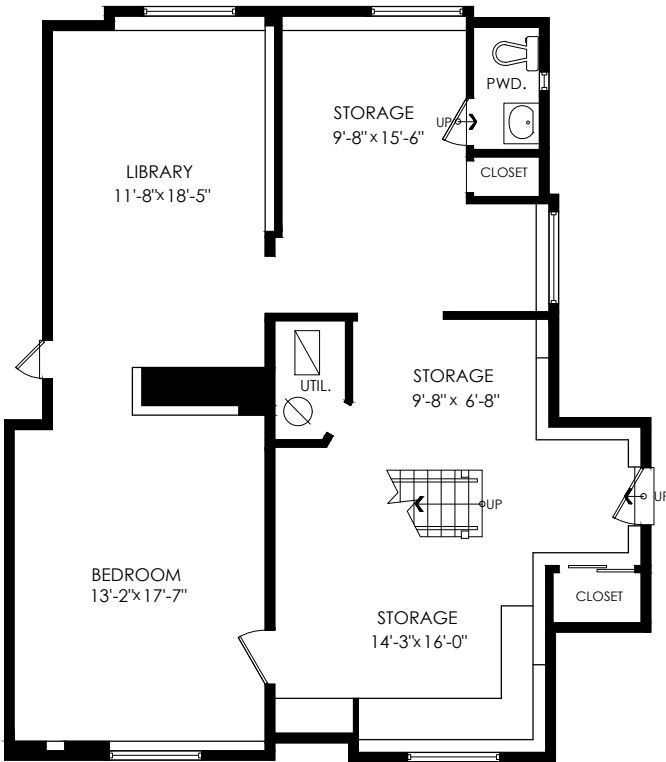
Total Extras: 211 sq. ft.

Garage: 584sq. ft.

Grand Total: 2,981 sq. ft.

Lower Floor Plan

Floor Area: 1138 sq.ft.
Ceiling Height: 6'-9"



Main Floor Plan

Floor Area: 1259 sq.ft.
Ceiling Height: 7'-5"

