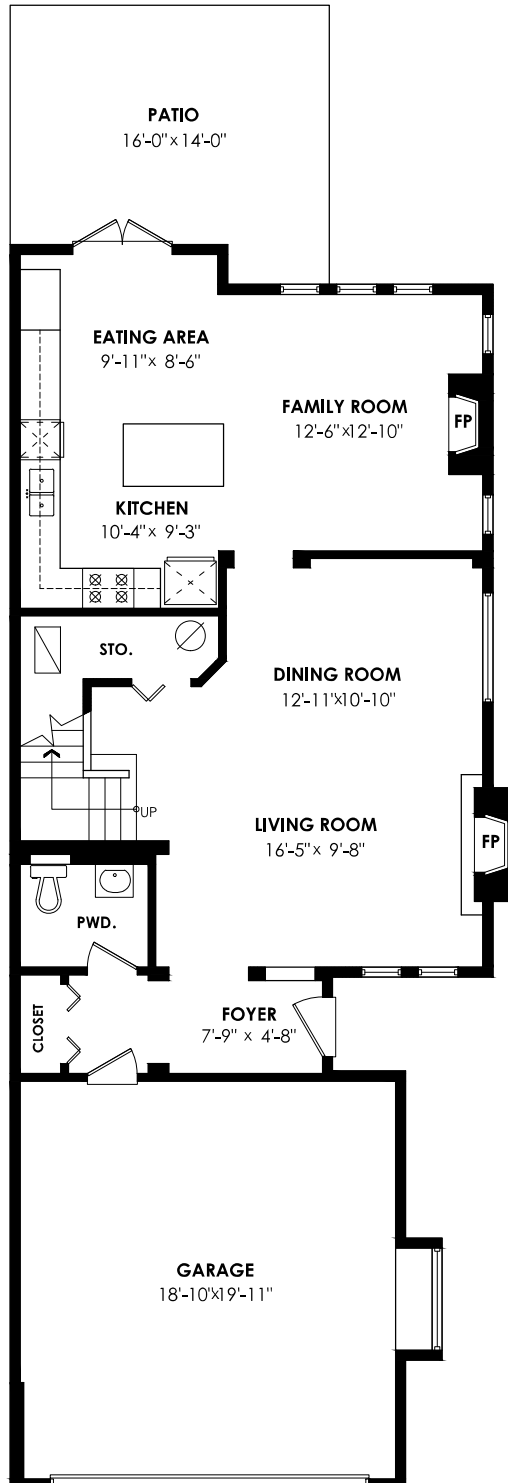


# 32-19452 Fraser Way, Pitt Meadows

Main Floor: 947 sq. ft.    Patio: 202 sq. ft.  
 Upper Floor: 960 sq. ft.    Deck: 120 sq. ft.  
**Total Livable: 1,907 sq. ft.    Total Extras: 322 sq. ft.**  
 Garage: 408 sq. ft.  
**Grand Total: 2,315 sq. ft.**

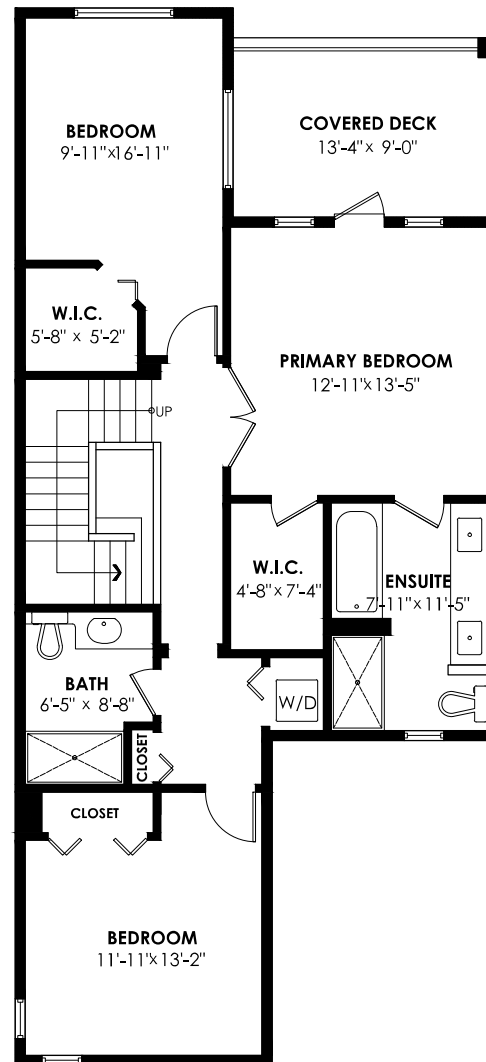
## Main Floor Plan

Floor Area: 947 sq.ft.  
 Ceiling Height: 8'-6"



## Upper Floor Plan

Floor Area: 960 sq.ft.  
 Ceiling Height: 8'



SCALE  
 0' 5'

