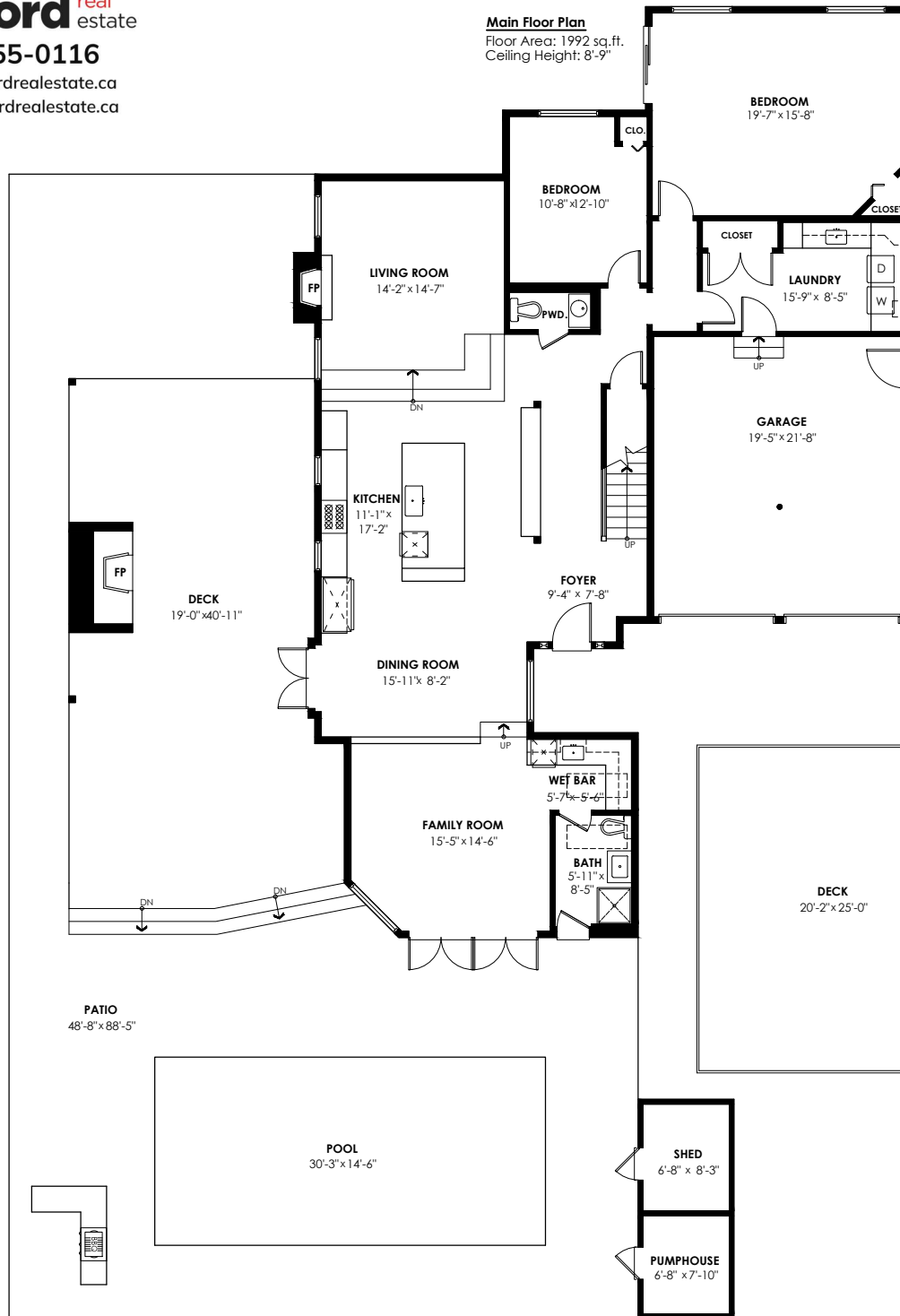


Main Floor Plan
 Floor Area: 1,992 sq.ft.
 Ceiling Height: 8'-9"



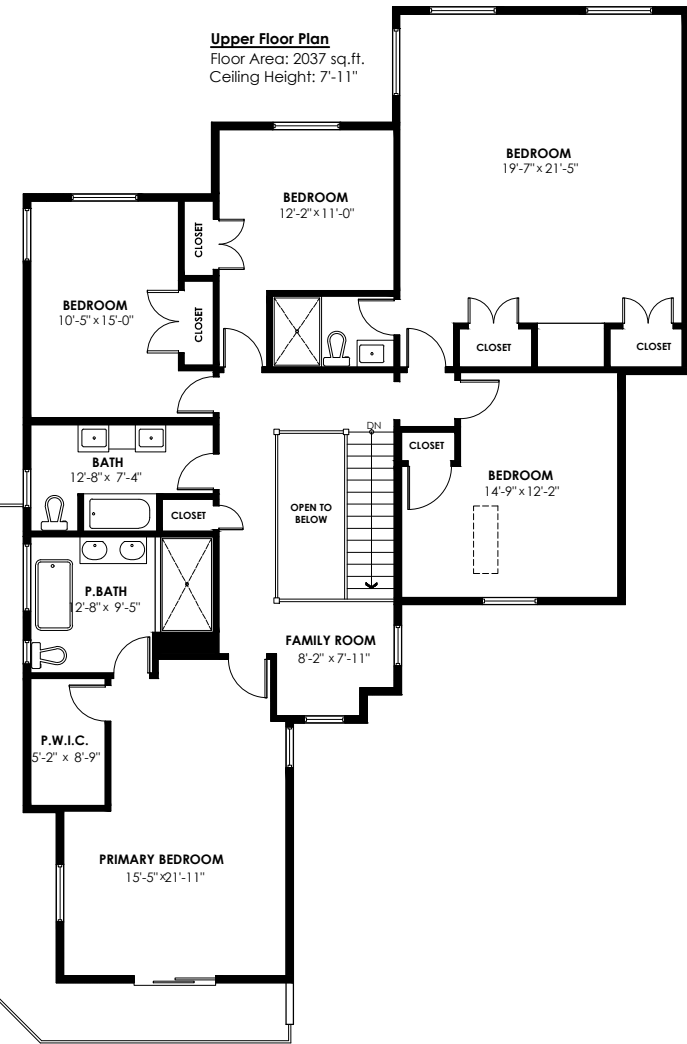
2453 Leclair Drive, Coquitlam

Main Floor: 1,992sq. ft.
 Upper Floor: 2,037sq. ft.
Total Livable: 4,029 sq. ft.

Garage: 442sq. ft.
Grand Total: 4,471 sq. ft.

Pump House: 62sq. ft.
 Deck: 1,429sq. ft.
 Shed: 64sq. ft.
 Patio: 1,632sq. ft.
 Pool: 439sq. ft.
Total Extras: 3,626sq. ft.

Upper Floor Plan
 Floor Area: 2,037 sq.ft.
 Ceiling Height: 7'-11"



SCALE
 0' 3'

