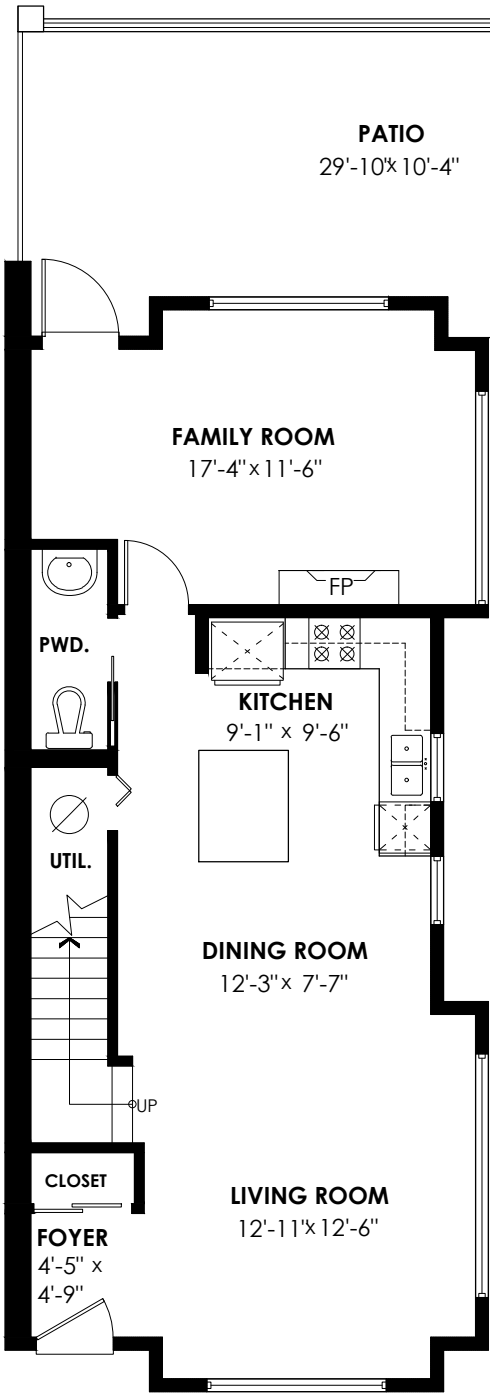


# 12-130 Brew Street, Port Moody

Main Floor:	734 sq. ft.	Patio:	358 sq. ft.
Upper Floor:	737 sq. ft.	Balcony:	62 sq. ft.
Total Livable: 1,471 sq. ft.		Total Extras: 420 sq. ft.	

## Main Floor Plan

Floor Area: 734 sq.ft.  
Ceiling Height: 9'



## Upper Floor Plan

Floor Area: 737 sq.ft.  
Ceiling Height: 12'-6"

