

216-225 Newport Drive, Port Moody

Axford real estate

778-355-0116

info@axfordrealestate.ca

www.axfordrealestate.ca

Axford Real Estate

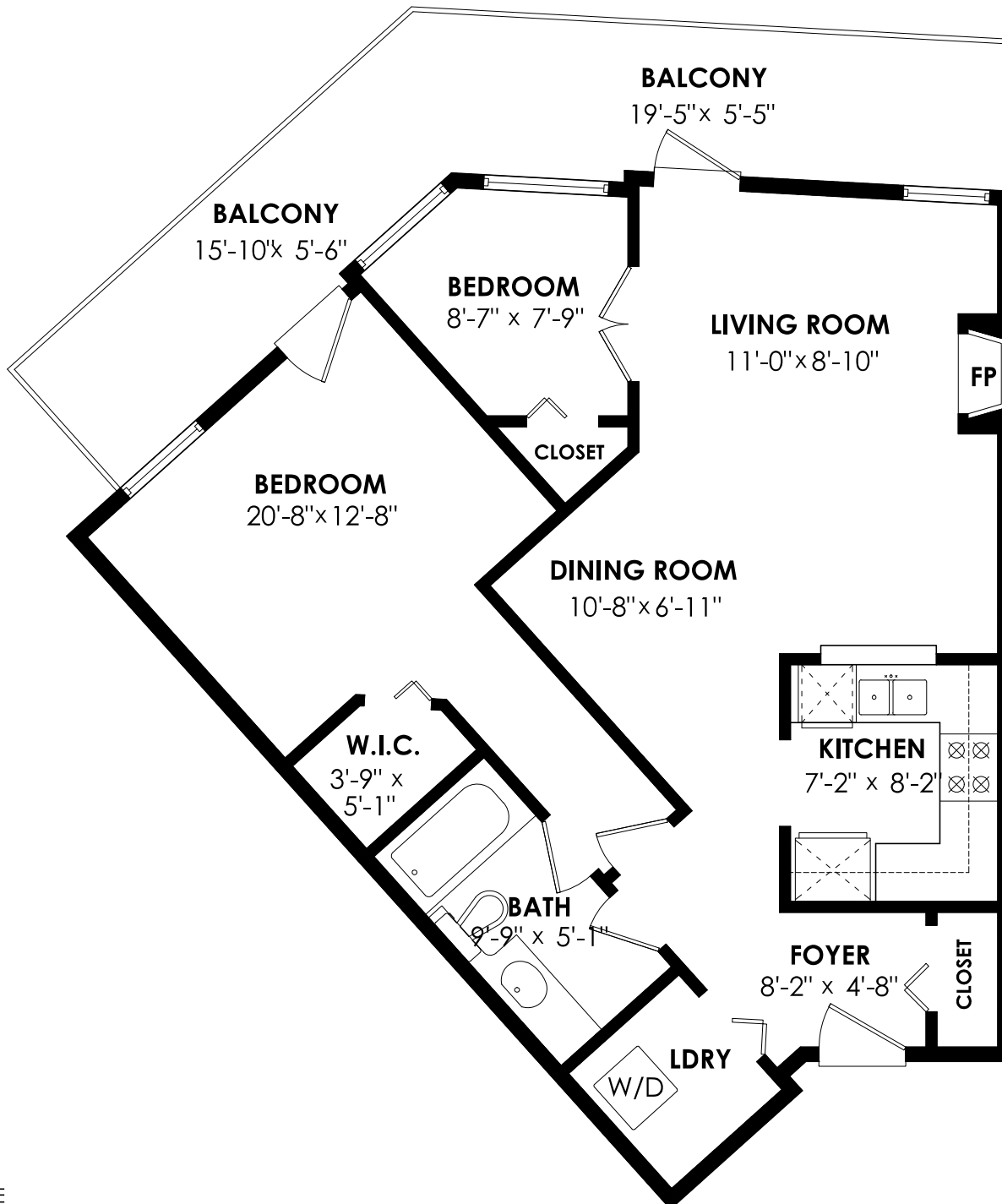
Main Floor: 791 sq. ft. Balcony: 204 sq. ft.

Total Livable: 791 sq. ft. Total Extras: 204 sq. ft.

Main Floor Plan

Floor Area: 791 sq.ft.

Ceiling Height: 8'



cotala

E&O Insured. For advertising purposes only. Not intended for architectural or construction use. Floorplan and measurements are approximate within +/- 2% tolerance.