

AXFORD

REAL ESTATE & PROPERTY MANAGEMENT GROUP

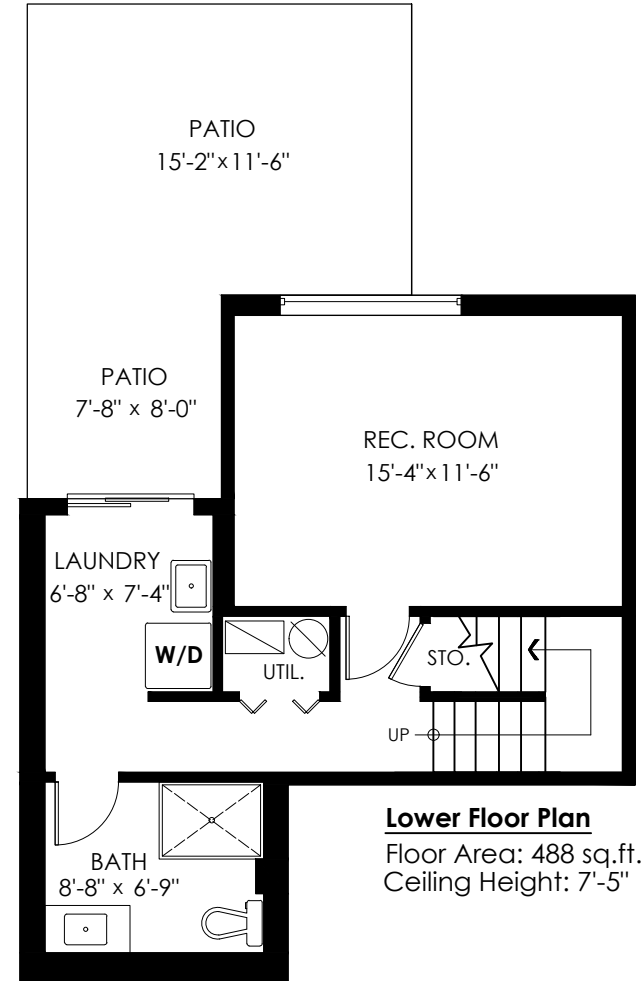
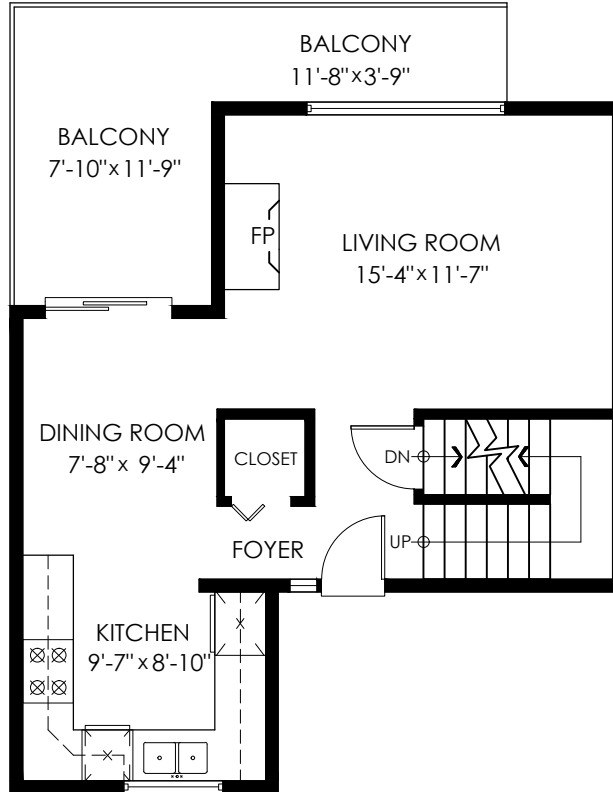
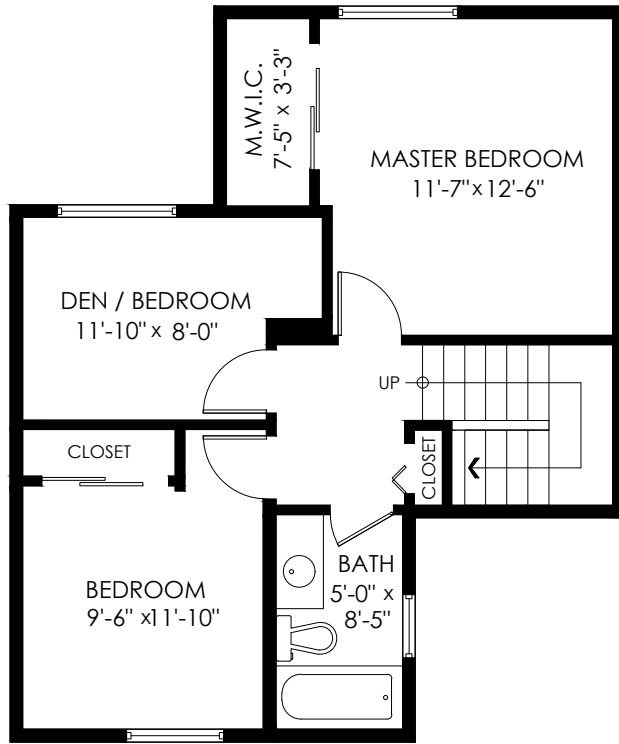
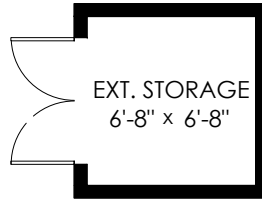


778-355-0116
info@theaxfords.com
www.theaxfords.com

Main Floor: 490 sq.ft.
Upper Floor: 569 sq.ft.
Lower Floor: 488 sq.ft.
Total Livable: 1,547 sq.ft.

**101-2915 Norman Ave
Coquitlam**

Patio: 236 sq.ft.
Ext. Storage: 59 sq.ft.
Balcony: 136 sq.ft.
Total Extras: 431 sq.ft.



cotala

This is for marketing purposes only and is not intended for architectural/construction use. All details, sizes & placements should be considered approximate within +/- 2% tolerance.

E&O Insured. Total square foot calculated to gross unit area. SQFT based on interior measurements to exterior walls, not taken from original blueprints, may include unfinished area.

MEASURED ON: (2022-09-21)
info@pixlworks.com www.pixlworks.com 604.329.5788

