

# AXFORD

REAL ESTATE & PROPERTY MANAGEMENT GROUP

778-355-0116

info@theaxfords.com

www.theaxfords.com

Royal LePage Sterling Realty

904-301 Capilano Road, Port Moody

Main Floor: 1,112 sq. ft.

Total Livable: 1,112 sq. ft.

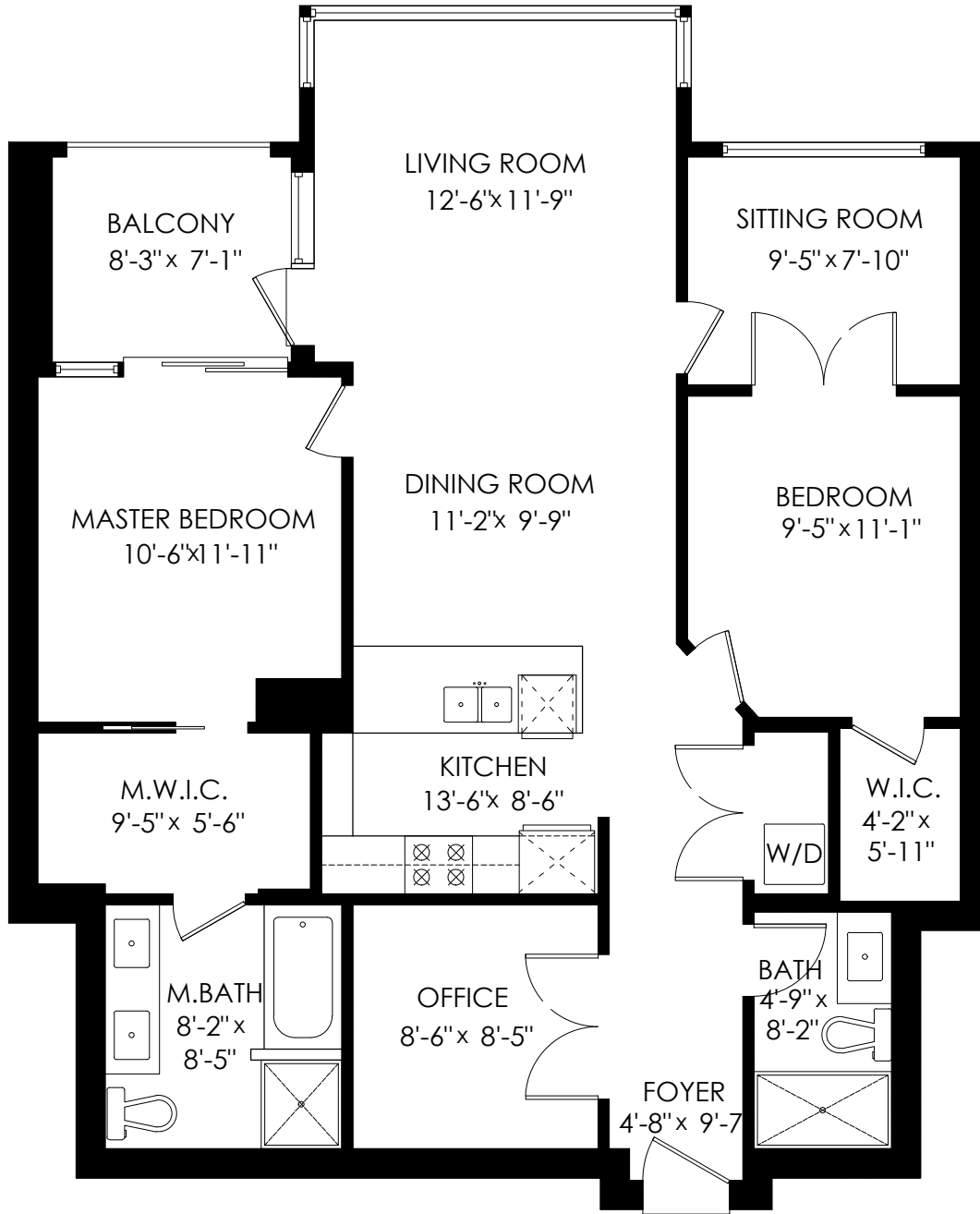
Balcony: 72 sq. ft.

Total Extras: 72 sq. ft.

## Main Floor Plan

Floor Area: 1112 sq.ft.

Ceiling Height: 8'-6"



SCALE



cotala

E&O Insured. For advertising purposes only. Not intended for architectural or construction use. Floorplan and measurements are approximate within +/- 2% tolerance.