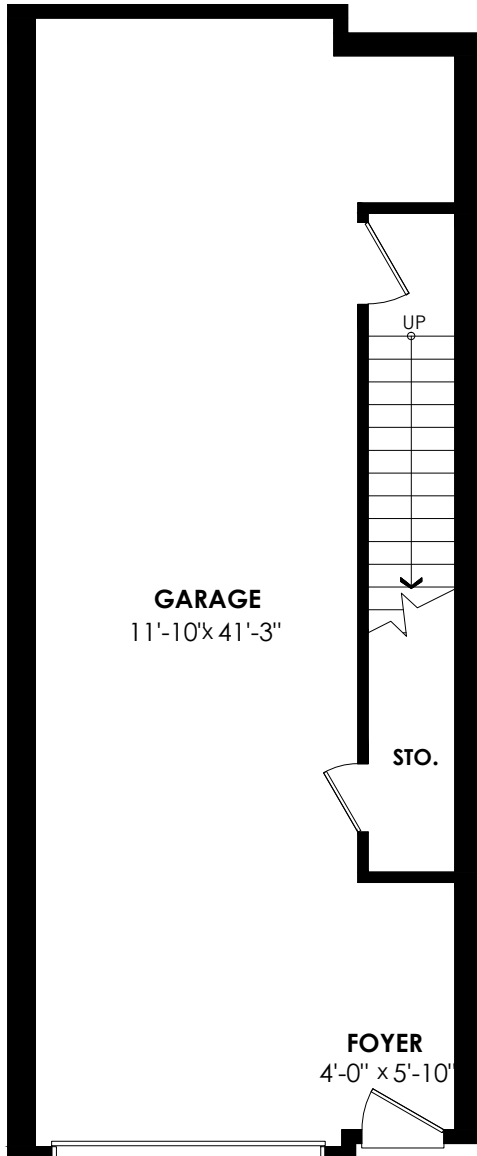


117-1125 Kensal Place, Coquitlam

Main Floor: 60sq. ft. Patio: 87 sq. ft.
Main Floor: 675sq. ft. **Total Extras: 87 sq. ft.**
Upper Floor: 677sq. ft.
Total Livable: 1,412 sq. ft.
Garage: 623sq. ft.
Grand Total: 2,035 sq. ft.

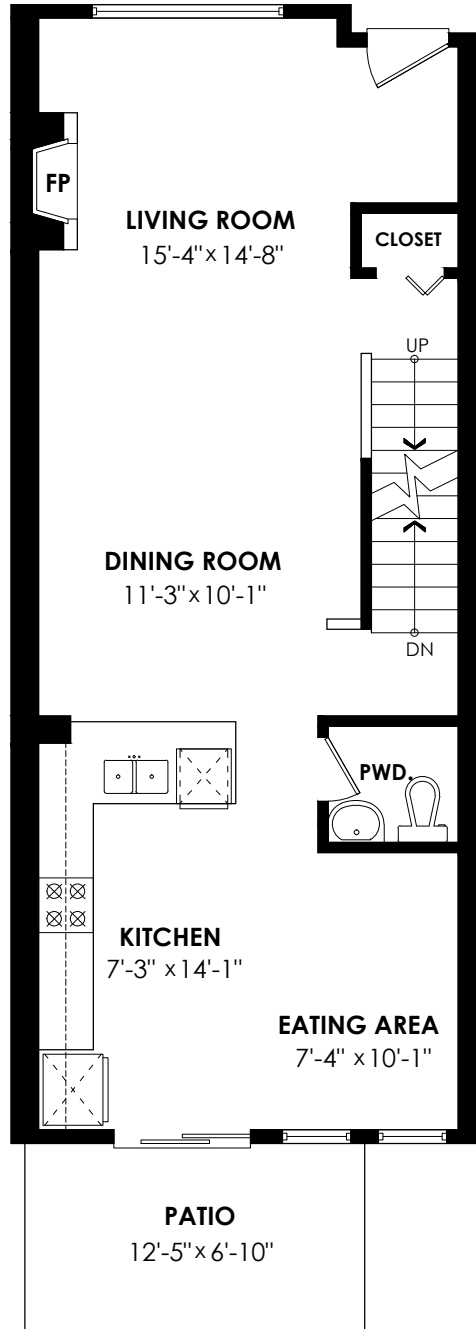
Lower Floor Plan

Floor Area: 60 sq.ft.
Ceiling Height: 9'-3"



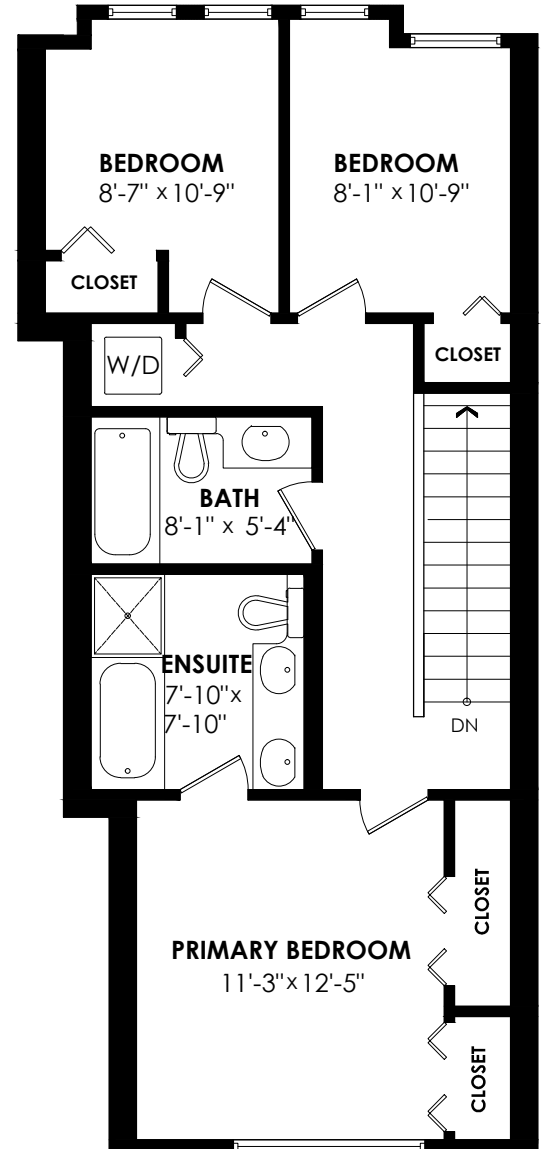
Main Floor Plan

Floor Area: 675 sq.ft.
Ceiling Height: 9'



Upper Floor Plan

Floor Area: 677 sq.ft.
Ceiling Height: 8'



SCALE
0' 5'

cotala

E&O Insured. For advertising purposes only. Not intended for architectural or construction use. Floorplan and measurements are approximate within +/- 2% tolerance.

