

497 San Remo Drive, Port Moody

Lower Floor: 491 sq. ft.
Main Floor: 861 sq. ft.
First Floor: 85 sq. ft.
Upper Floor: 797 sq. ft.

Patio: 227 sq. ft.
Balcony: 216 sq. ft.
Terrace: 352 sq. ft.

Total Extras: 795 sq. ft.

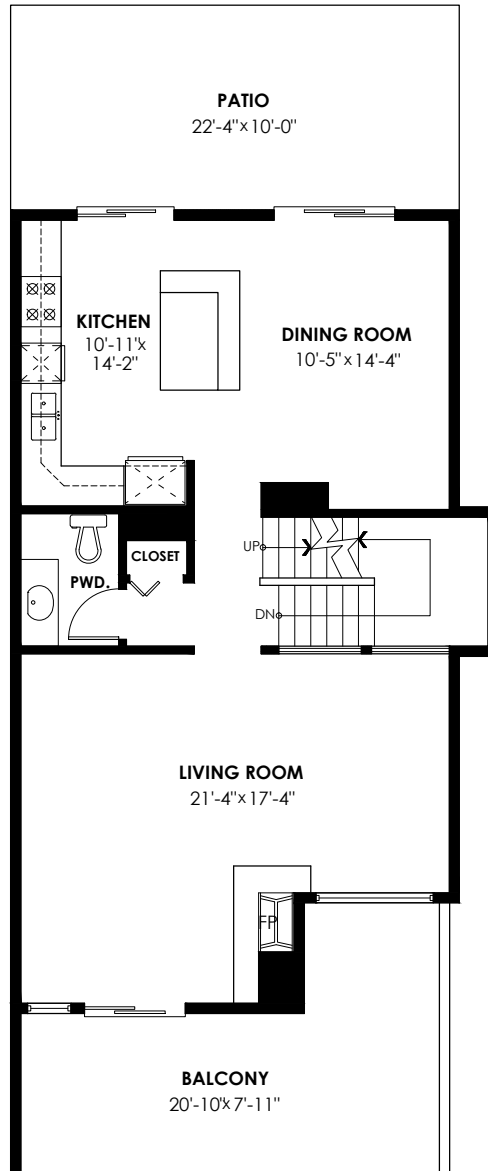
Total Livable: 2,234 sq. ft.

Garage: 450 sq. ft.

Grand Total: 2,684 sq. ft.

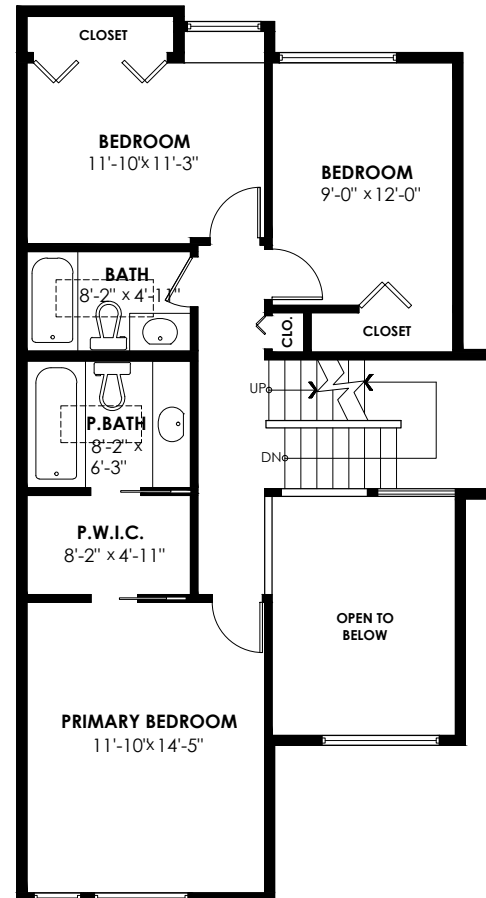
Main Floor Plan

Floor Area: 861 sq.ft.
Ceiling Height: 7'-11"



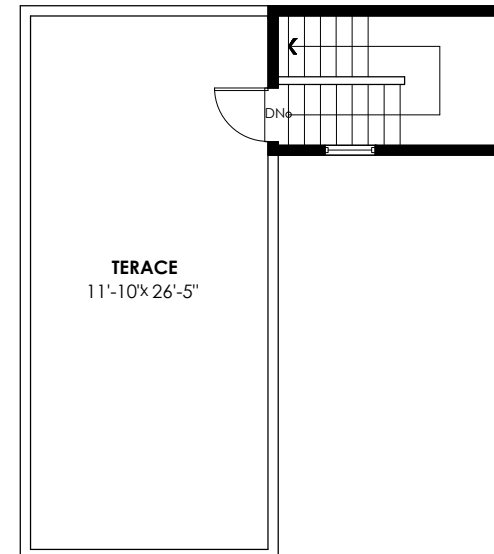
First Floor Plan

Floor Area: 797 sq.ft.
Ceiling Height: 8'



Upper Floor Plan

Floor Area: 85 sq.ft.
Ceiling Height: 10'-2"



Lower Floor Plan

Floor Area: 491 sq.ft.
Ceiling Height: 8'

