

# AXFORD

REAL ESTATE & PROPERTY MANAGEMENT GROUP

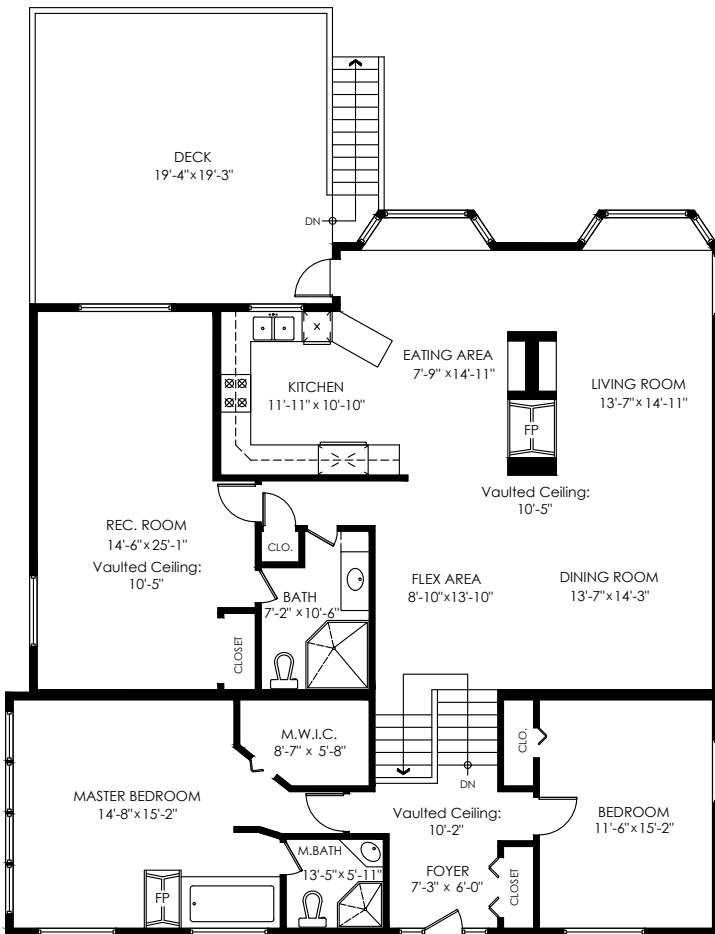
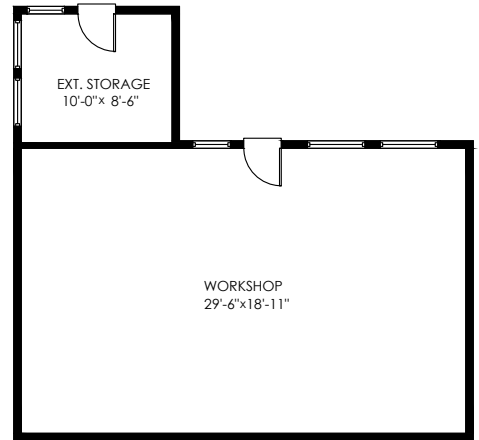


778-355-0116  
info@theaxfords.com  
www.theaxfords.com

352 Clarence St  
Port Moody

Main Floor: 1,278 sq.ft.  
Upper Floor: 774 sq.ft.  
Bottom Floor: 1,251 sq.ft.  
Lower Floor: 775 sq.ft.  
**Total Livable: 4,078 sq.ft.**

Carport: 465 sq.ft.  
Patio: 343 sq.ft.  
Ext. Storage/ Workshop: 706 sq.ft.  
Deck: 376 sq.ft.  
**Total Extras: 1,890 sq.ft.**

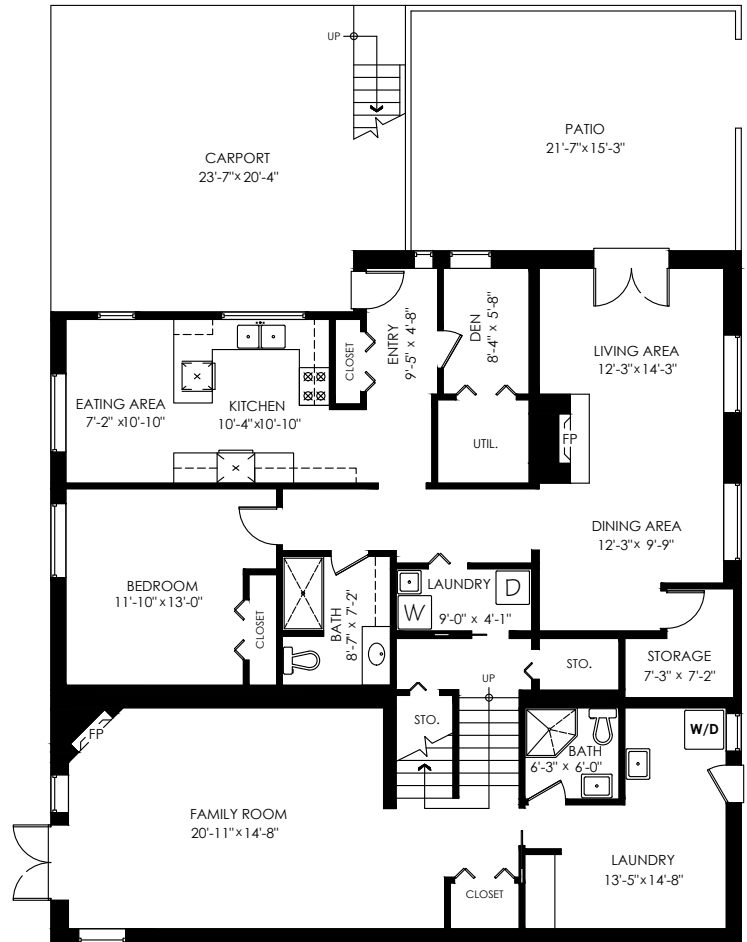


**Upper Floor Plan**

Floor Area: 774 sq.ft.  
Ceiling Height: 8'-3"

**Main Floor Plan**

Floor Area: 1278 sq.ft.  
Ceiling Height: 9'-1"



**Lower Floor Plan**

Floor Area: 775 sq.ft.  
Ceiling Height: 7'-11"

**Bottom Floor Plan**

Floor Area: 1251 sq.ft.  
Ceiling Height: 8'-1"



cotala

E&O Insured. Total square foot calculated to gross unit area. SQFT based on interior measurements to exterior walls, not taken from original blueprints, may include unfinished area. This is for marketing purposes only and is not intended for architectural/construction use. All details, sizes & placements should be considered approximate within +/- 2% tolerance.

info@pixlworks.com www.pixlworks.com 604.329.5788

