

AXFORD

REAL ESTATE & PROPERTY MANAGEMENT GROUP



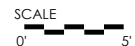
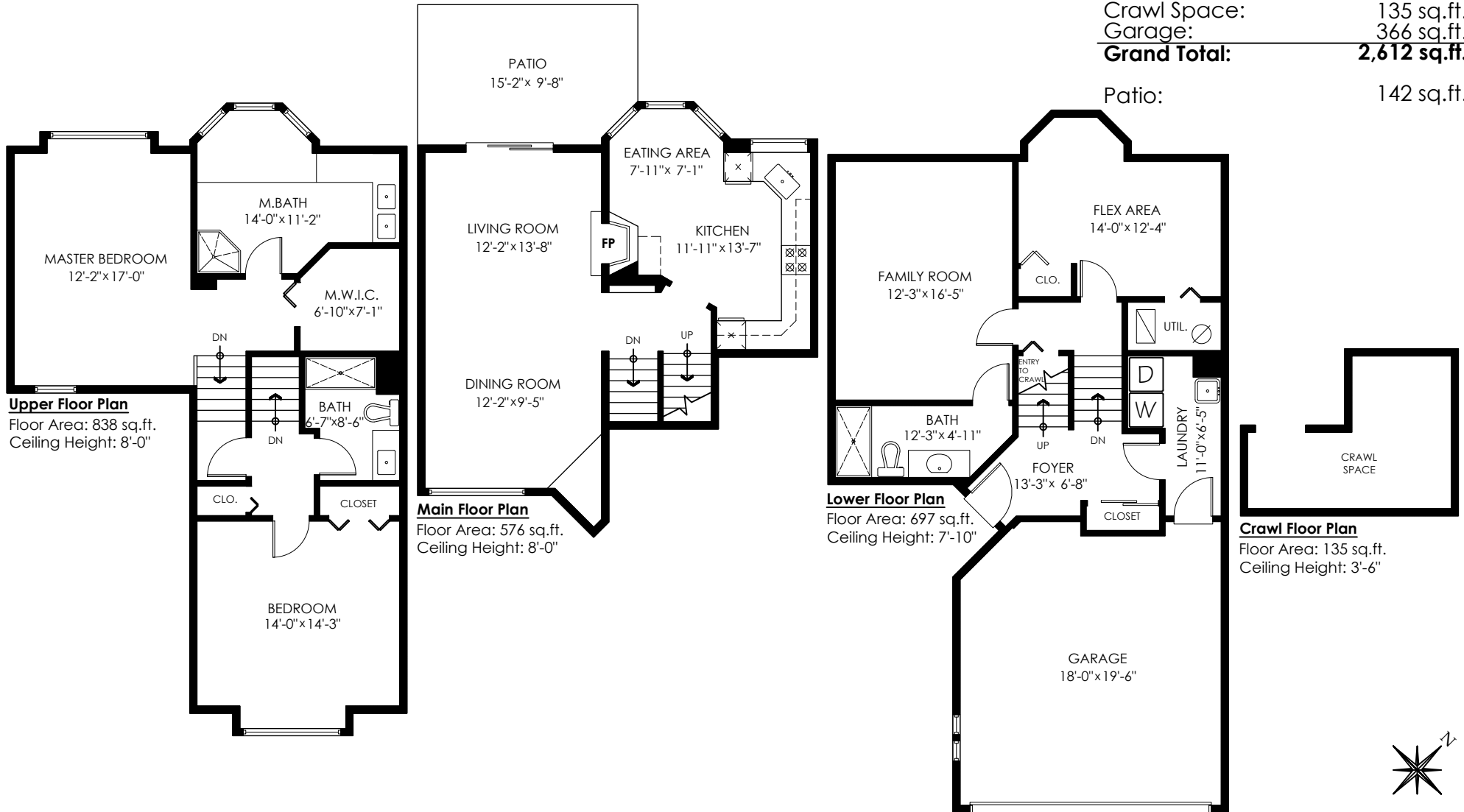
778-355-0116
 info@theaxfords.com
 www.theaxfords.com

10-2990 Panorama Dr Coquitlam

Main Floor: 576 sq.ft.
 Upper Floor: 838 sq.ft.
 Lower Floor: 697 sq.ft.
Total Livable: 2,111 sq.ft.

Crawl Space: 135 sq.ft.
 Garage: 366 sq.ft.
Grand Total: 2,612 sq.ft.

Patio: 142 sq.ft.



E&O Insured. Total square foot calculated to gross unit area. SQFT based on interior measurements to exterior walls, not taken from original blueprints, may include unfinished area. This is for marketing purposes only and is not intended for architectural/construction use. All details, sizes & placements should be considered approximate within +/- 2% tolerance.

MEASURED ON: (2022-05-24)
 info@pixlworks.com www.pixlworks.com 604.329.5788

