

AXFORD

REAL ESTATE & PROPERTY MANAGEMENT GROUP



778-355-0116
 info@theaxfords.com
 www.theaxfords.com

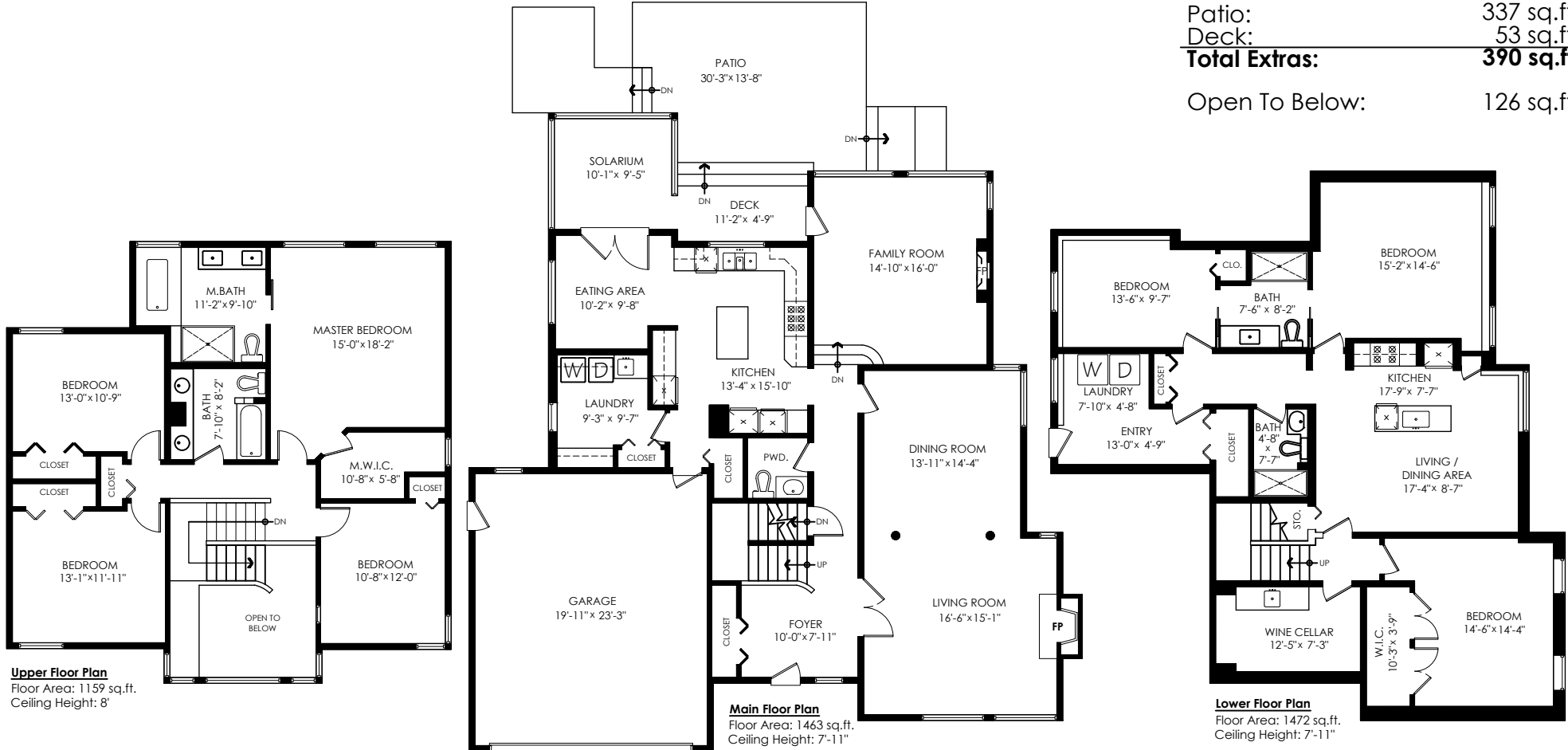
2472 Leclair Drive, Coquitlam

Main Floor: 1,463 sq.ft.
 Upper Floor: 1,159 sq.ft.
 Lower Floor: 1,472 sq.ft.
Total Livable: 4,094 sq.ft.

Garage: 499 sq.ft.
Grand Total: 4,593 sq.ft.

Patio: 337 sq.ft.
 Deck: 53 sq.ft.
Total Extras: 390 sq.ft.

Open To Below: 126 sq.ft.



Upper Floor Plan
 Floor Area: 1159 sq.ft.
 Ceiling Height: 8'

Main Floor Plan
 Floor Area: 1463 sq.ft.
 Ceiling Height: 7'-11"

Lower Floor Plan
 Floor Area: 1472 sq.ft.
 Ceiling Height: 7'-11"



SCALE
 0' 5'



This is for marketing purposes only and is not intended for architectural/construction use. All details, sizes & placements should be considered approximate within +/- 2% tolerance.

MEASURED ON: (2022-04-19)
 info@pixlworks.com www.pixlworks.com 604.329.5788

