

# AXFORD

REAL ESTATE & PROPERTY MANAGEMENT GROUP



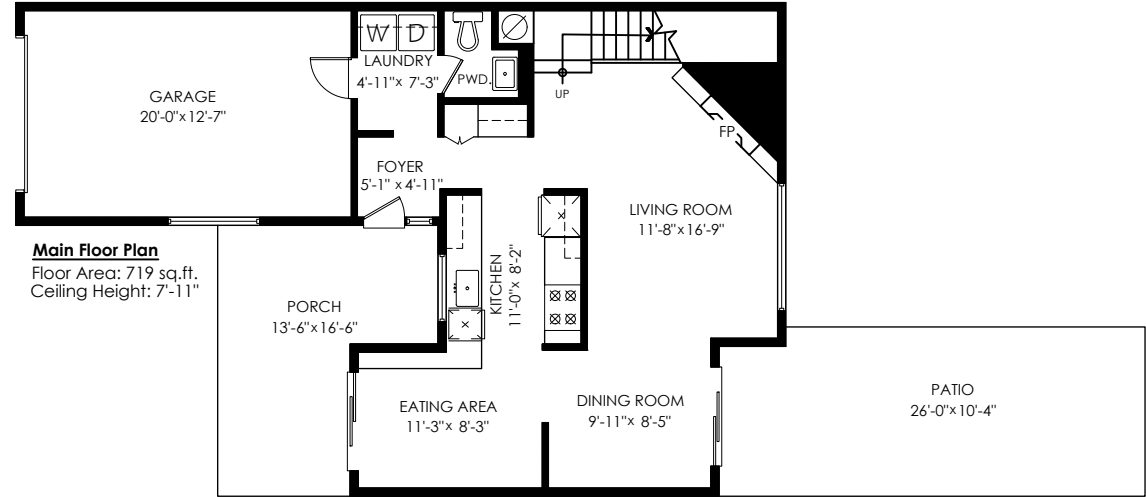
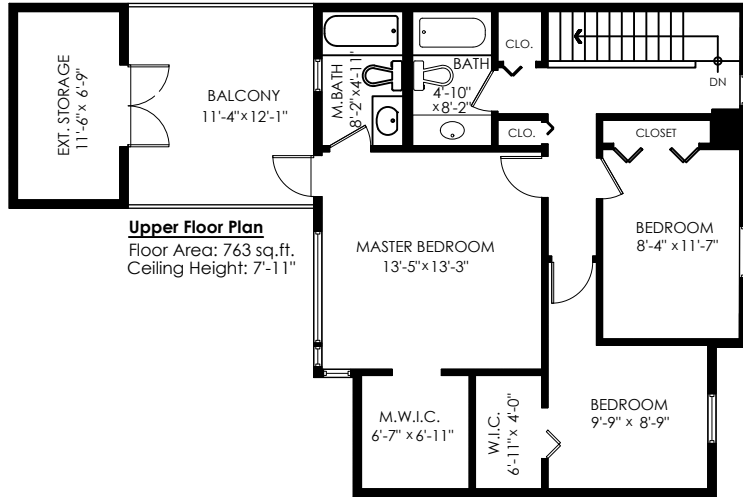
778-355-0116  
 info@theaxfords.com  
 www.theaxfords.com

## 104E-3665 Shaughnessy St, Port Coquitlam

Main Floor: 719 sq.ft.  
 Upper Floor: 763 sq.ft.  
**Total Livable: 1,482 sq.ft.**

Garage: 284 sq.ft.  
**Grand Total: 1,766 sq.ft.**

Patio: 264 sq.ft.  
 Ext. Storage: 91 sq.ft.  
 Balcony: 137 sq.ft.  
 Porch: 172 sq.ft.  
**Total Extras: 664 sq.ft.**



E&O Insured. Total square foot calculated to gross unit area. SQFT based on interior measurements to exterior walls, not taken from original blueprints, may include unfinished area. This is for marketing purposes only and is not intended for architectural/construction use. All details, sizes & placements should be considered approximate within +/- 2% tolerance.

MEASURED ON: (2022-04-23)  
 info@pixlworks.com www.pixlworks.com 604.329.5788

