

AXFORD

REAL ESTATE & PROPERTY MANAGEMENT GROUP

ROYAL LEPAGE Sterling Realty
 778-355-0116
 info@theaxfords.com
 www.theaxfords.com

50-6577 Southoaks Cres,
 Burnaby



Main Floor: 552 sq.ft.
 Upper Floor: 552 sq.ft.
 Roof Floor: 49 sq.ft.
Total: 1,104 sq.ft.

Roof Patio: 176 sq.ft.
 Porch: 69 sq.ft.
Total Extras: 245 sq.ft.



Roof Floor Plan
 Floor Area: 49 sq.ft.

Upper Floor Plan
 Floor Area: 552 sq.ft.
 Ceiling Height: 8'-0"

Main Floor Plan
 Floor Area: 552 sq.ft.
 Ceiling Height: 7'-7"



Measurements, Design & Scanning | 604-329-5788

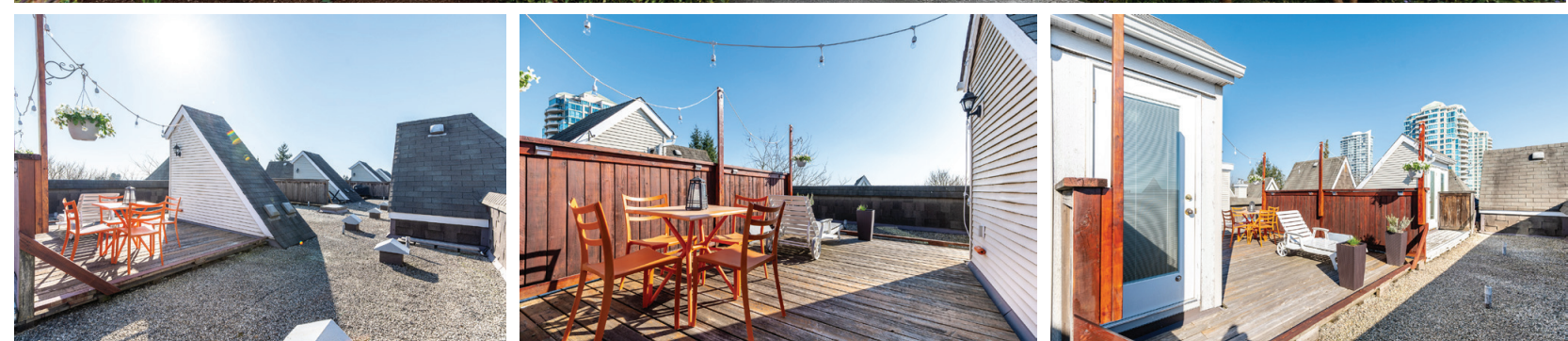
E&O Insured for \$1,000,000. Total square foot calculated to gross unit area. SQFT based on interior measurements to exterior walls, not taken from original blueprints, may include unfinished area. This is for marketing purposes only and is not intended for architectural/construction use. All details, sizes & placements should be considered approximate within +/- 2% tolerance. www.PixlWorks.com

The enclosed information while deemed to be correct, is not guaranteed.
 This communication is not intended to solicit properties already listed for sale.

Produced and printed by **co tala** www.cotala.com

LISTING features

50 - 6577 Southoaks Crescent, Burnaby



AXFORD

REAL ESTATE & PROPERTY MANAGEMENT GROUP

778-355-0116
 info@theaxfords.com
 www.theaxfords.com



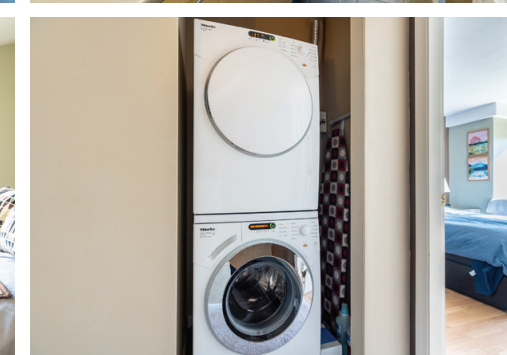
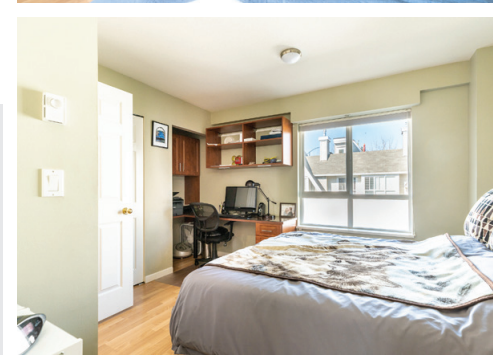


TAKE THE TOUR

50 - 6577 Southoaks Crescent, Burnaby



Tudor Grove built by award winning Adera. This contemporary 2 level home has a front patio plus bonus and private rooftop deck with beautiful 360 degree views. This quiet location one block off of Kingsway is nestled next to Highland Trail and a short walk to Byrne Creek Park, walking distance to skytrain, restaurants and shops. The large, bright kitchen has had many updates including newer appliances and a built in office with additional storage. Tastefully upgraded floors, paint and new LED lighting. Built in features include custom shelving in the bedrooms, built in desk upstairs is a great space saver and entrance way hooks and storage. Grohe shower systems, meile washer and dryer, California Closets, 2 parking and 1 storage.. this home has it all!



AXFORD
REAL ESTATE & PROPERTY MANAGEMENT GROUP

Price	\$729,000
Tax	\$2463.72/2019
Maint	\$399.39
Size	1,104 sf
Bedrooms	2
Bathrooms	2