

AXFORD

REAL ESTATE & PROPERTY MANAGEMENT GROUP

778.355.0116 | info@theaxfords.com
www.theaxfords.com

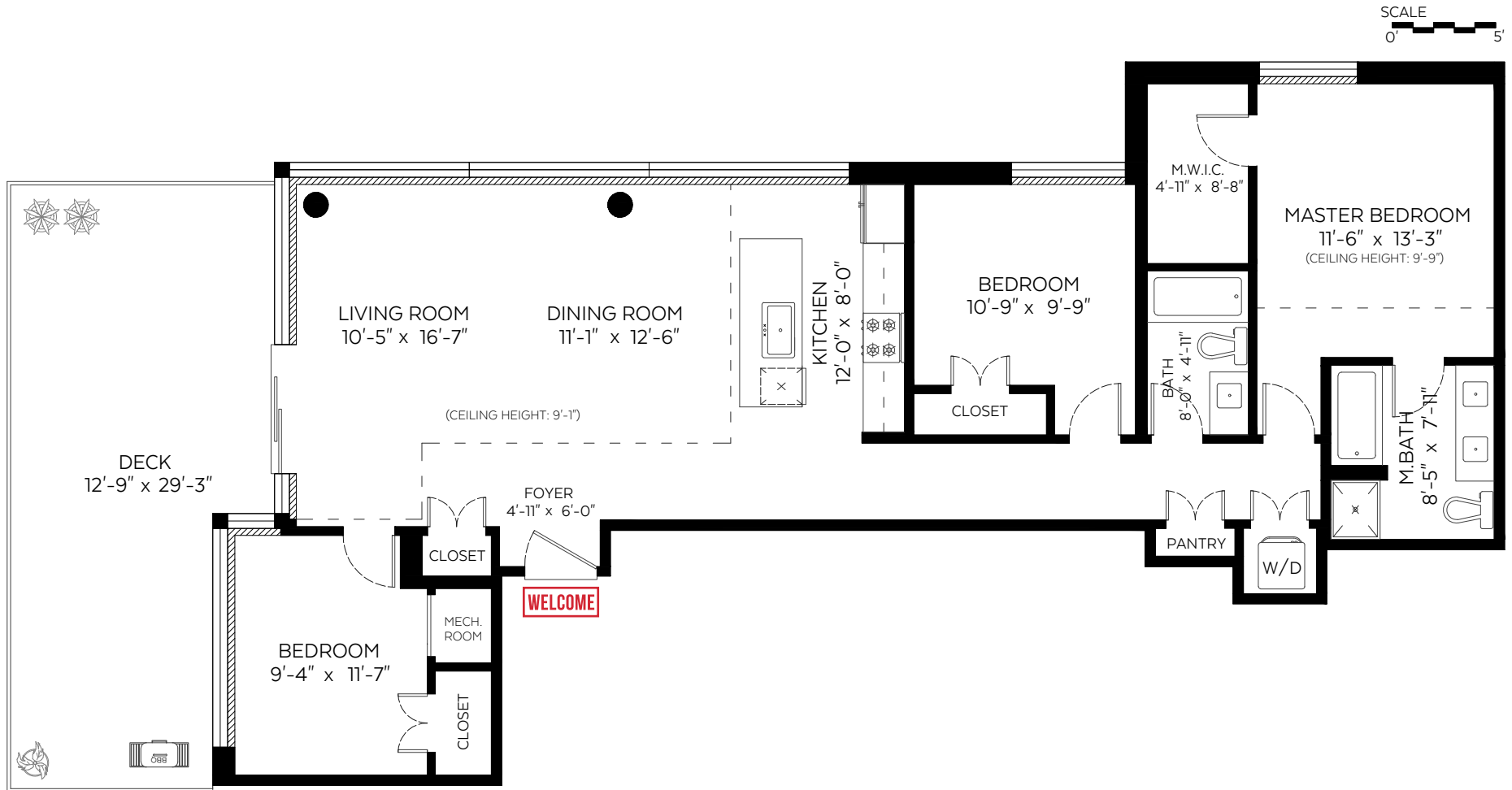
#2802-602 Como Lake Avenue,
Coquitlam, B.C.

Main Floor: 1,370 sq.ft.

Ceiling Height: 8'-1" Unless Noted

Auxiliary Area

Deck: 334 sq.ft.



Measured on: June 13, 2019

*SQFT is calculated from Exterior wall to Exterior Wall.

The floor plan is not suitable for architectural/construction and is covered under E&O. © Excelsior Measuring Inc. 2019. All rights reserved for Excelsior Measuring Inc. Users shall not publish and distribute such material (in whole or in part) and/or incorporate it in other works in any form.



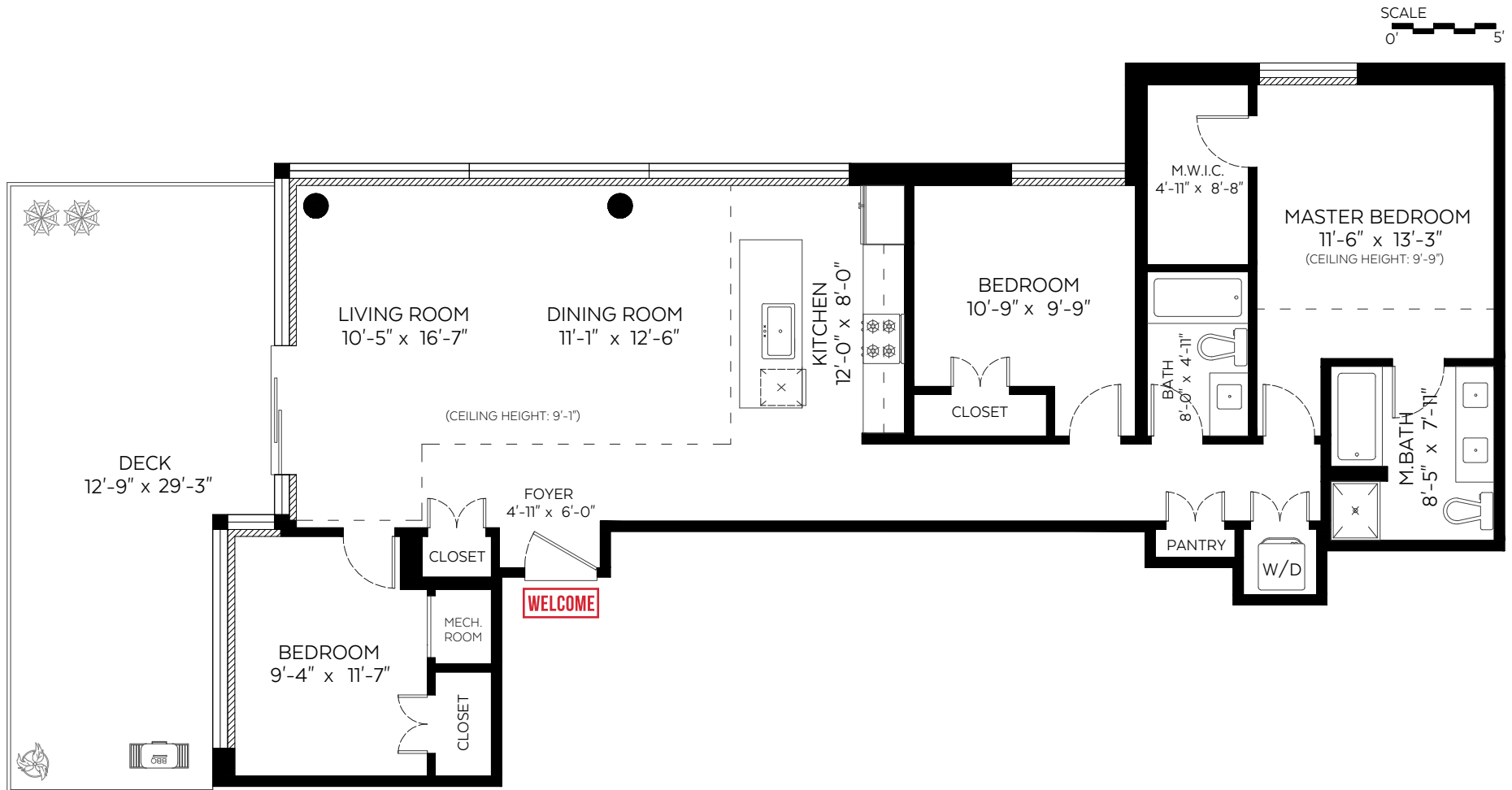
#2802-602 Como Lake Avenue,
Coquitlam, B.C.

Main Floor: 1,370 sq.ft.

Ceiling Height: 8'-1" Unless Noted

Auxiliary Area

Deck: 334 sq.ft.



Measured on: June 13, 2019

*SQFT is calculated from Exterior wall to Exterior Wall.

The floor plan is not suitable for architectural/construction and is covered under E&O. © Excelsior Measuring Inc. 2019. All rights reserved for Excelsior Measuring Inc. Users shall not publish and distribute such material (in whole or in part) and/or incorporate it in other works in any form.



#2802-602 Como Lake, Coquitlam, B.C.

Property Type: Condo

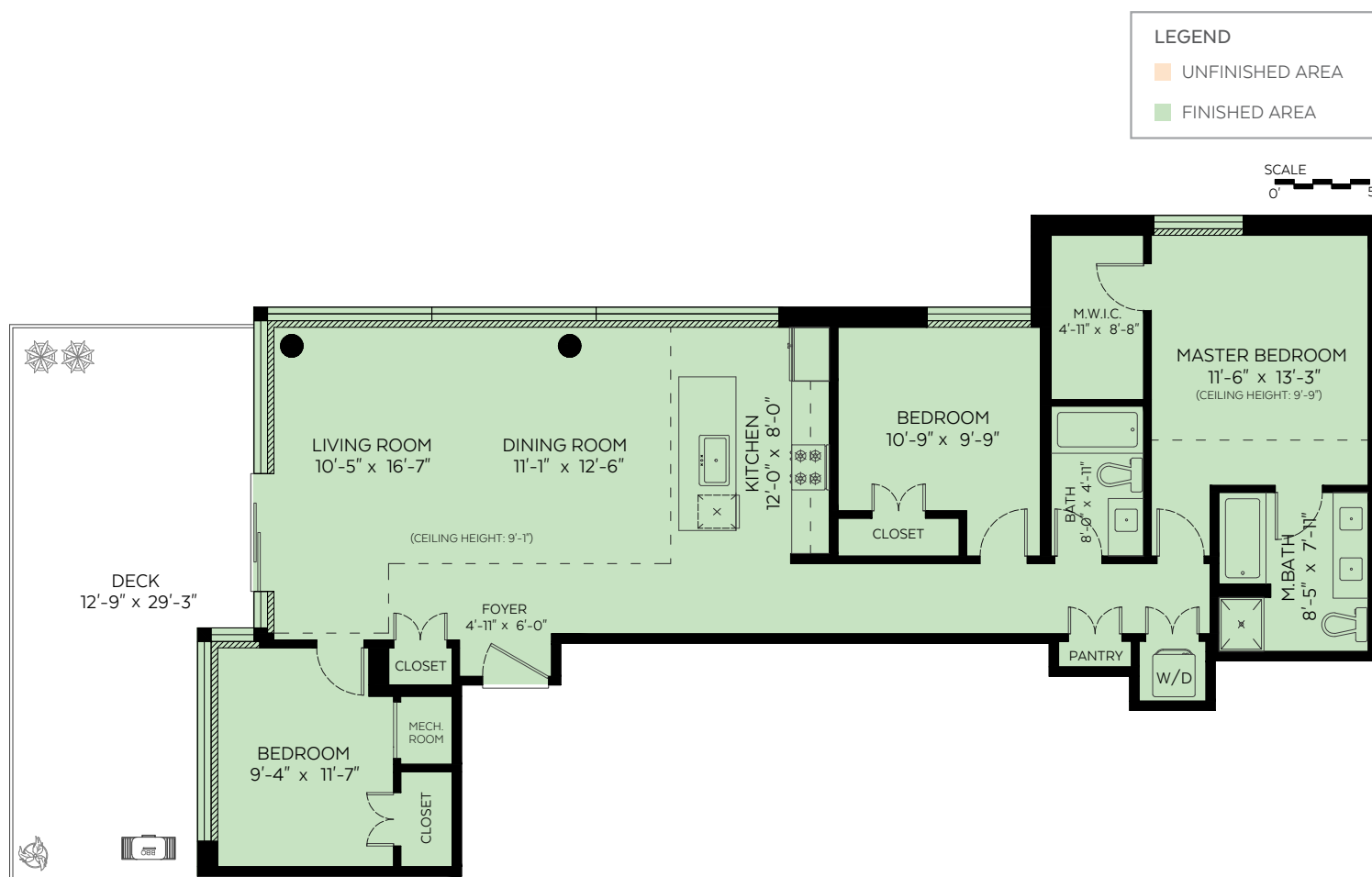


SQ.FT. INCLUDES

- Total square footage is calculated from exterior wall to exterior wall around the perimeter of the house and applicable areas.
- Square footage of stairs counts towards the floor that they service.
- Any area below the stairs on the lowest floor counts as square footage to that floor where ceiling height permits.
- Displayed room dimensions are interior wall to interior wall with the intention of giving the Buyer an idea of what will fit in the room. When added together, room dimensions will not equal to the total square footage.

SQ.FT. DOES NOT INCLUDE

- Area where the ceiling height is 5' or lower. Low volted ceiling and areas under stairs are often subject to this.
- Double height ceiling area or Open to Below areas where there is no floor.
- Bay windows, cantilever plant windows, cantilever fireplaces anything that does not extend all the way to the floor.
- Unfinished areas, cold storage, cellars, patios, balconies, decks, garages or other areas that are not suitable to live in year round. (listed separately from the total square footage of the home)



604.510.1299
team@excelsiorlevel.com
www.excelsiorlevel.com

604.514.9589
info@cotala.com
www.cotala.com

