

AXFORD

REAL ESTATE & PROPERTY MANAGEMENT GROUP



778-355-0116
 info@theaxfords.com
 www.theaxfords.com

2817 Westlake Dr, Coquitlam

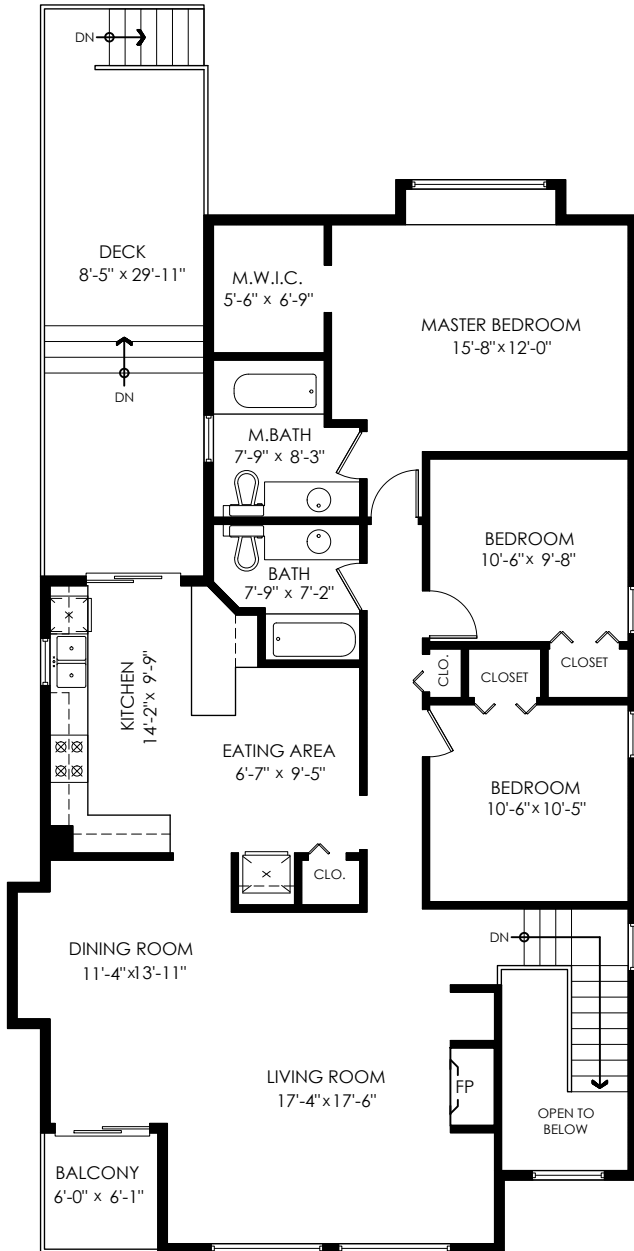
Main Floor: 1,457 sq.ft.
 Lower Floor: 1,081 sq.ft.
Total Livable: 2,538 sq.ft.

Garage: 450 sq.ft.
Grand Total: 2,988 sq.ft.

Patio: 89 sq.ft.
 Deck: 253 sq.ft.
 Balcony: 37 sq.ft.
Total Extras: 379 sq.ft.

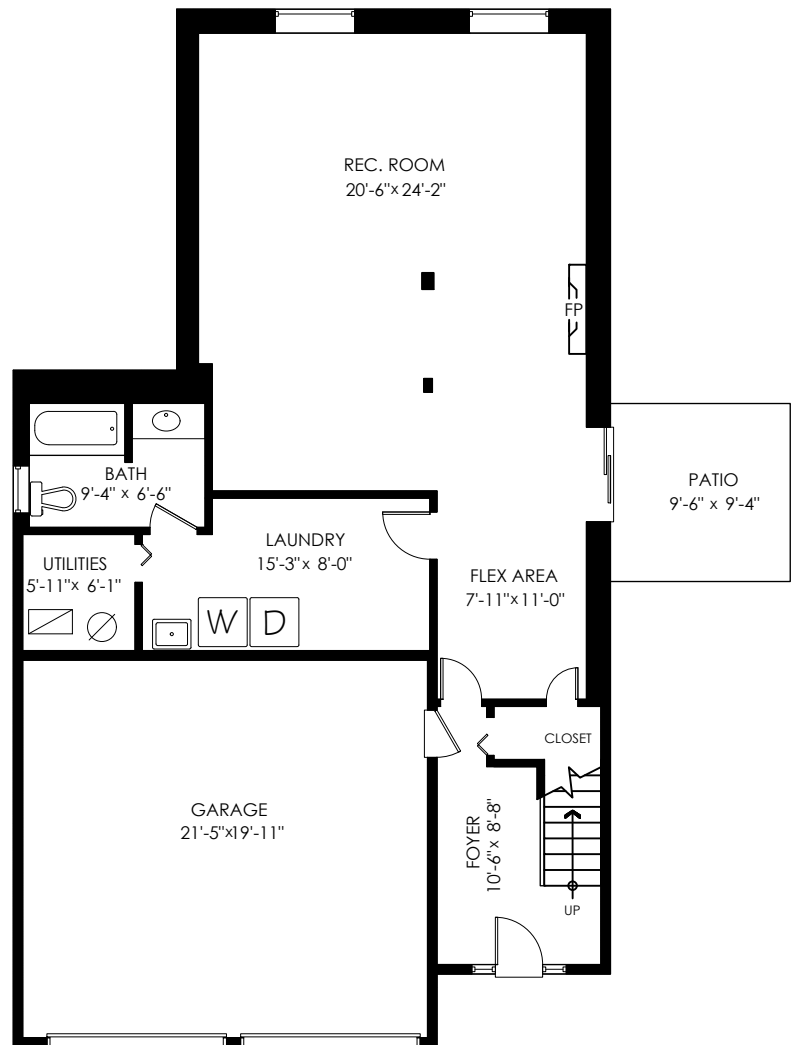
Open To Below: 57 sq.ft.

Ceiling Height: 8'-0"



Main Floor Plan

Floor Area: 1457 sq.ft.
 Ceiling Height: 8'



Lower Floor Plan

Floor Area: 1081 sq.ft.
 Ceiling Height: 8'



E&O Insured. Total square foot calculated to gross unit area. SQFT based on interior measurements to exterior walls, not taken from original blueprints, may include unfinished area. This is for marketing purposes only and is not intended for architectural/construction use. All details, sizes & placements should be considered approximate within +/- 2% tolerance.

info@pixlworks.com www.pixlworks.com 604.329.5788



MEASURED ON: (2022-04-17)