

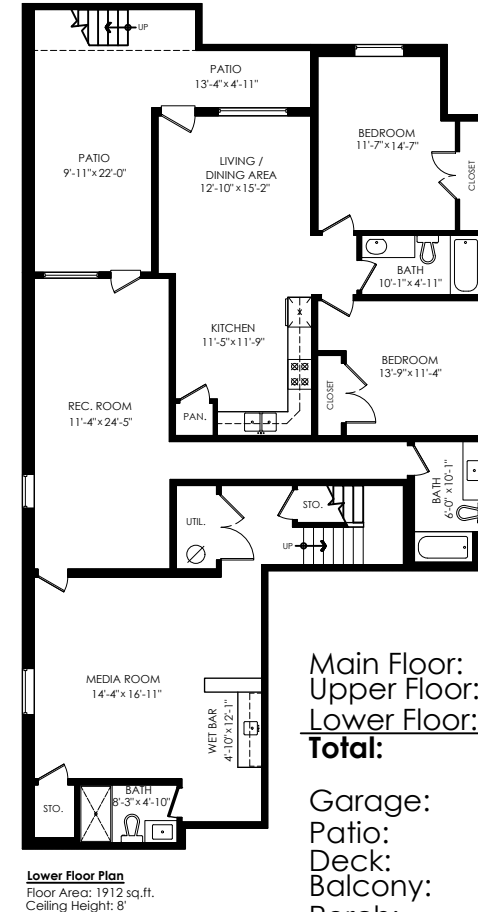
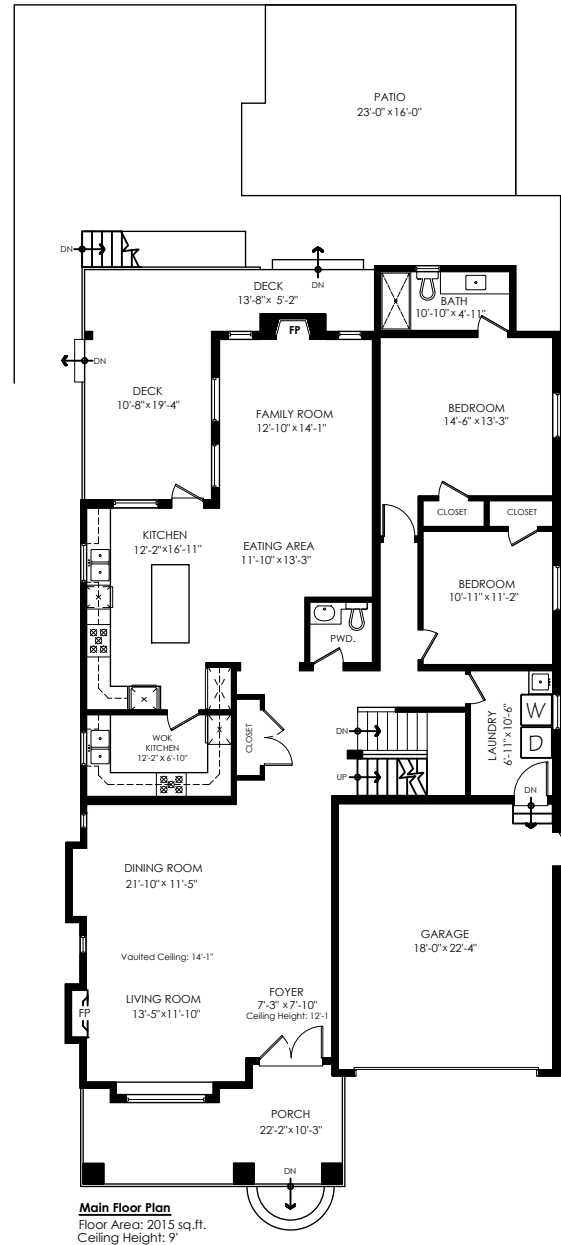
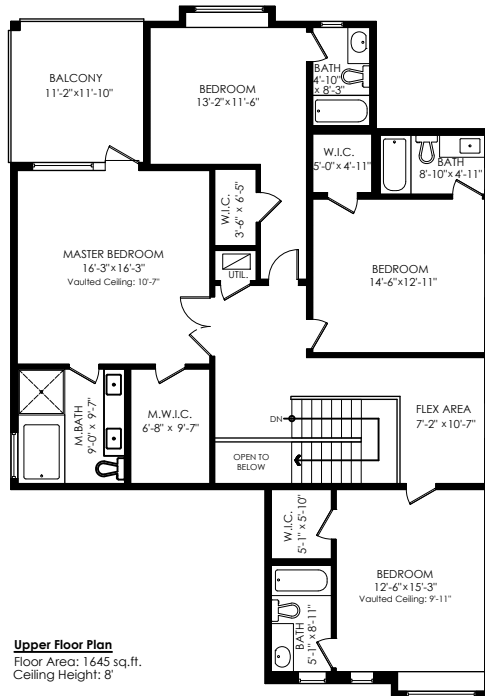
# AXFORD

REAL ESTATE & PROPERTY MANAGEMENT GROUP



778-355-0116  
info@theaxfords.com  
www.theaxfords.com

270 Mundy Street,  
Coquitlam



Main Floor: 2,015 sq.ft.  
Upper Floor: 1,645 sq.ft.  
Lower Floor: 1,912 sq.ft.  
**Total: 5,572 sq.ft.**

Garage: 427 sq.ft.  
Patio: 681 sq.ft.  
Deck: 268 sq.ft.  
Balcony: 132 sq.ft.  
Porch: 198 sq.ft.  
**Total Extras: 1,706 sq.ft.**

Open To Below: 26 sq.ft.



SCALE  
0' 5'



E&O Insured. Total square foot calculated to gross unit area. \$QFT based on interior measurements to exterior walls, not taken from original blueprints, may include unfinished area. This is for marketing purposes only and is not intended for architectural/construction use. All details, sizes & placements should be considered approximate within +/- 2% tolerance. www.PixlWorks.com

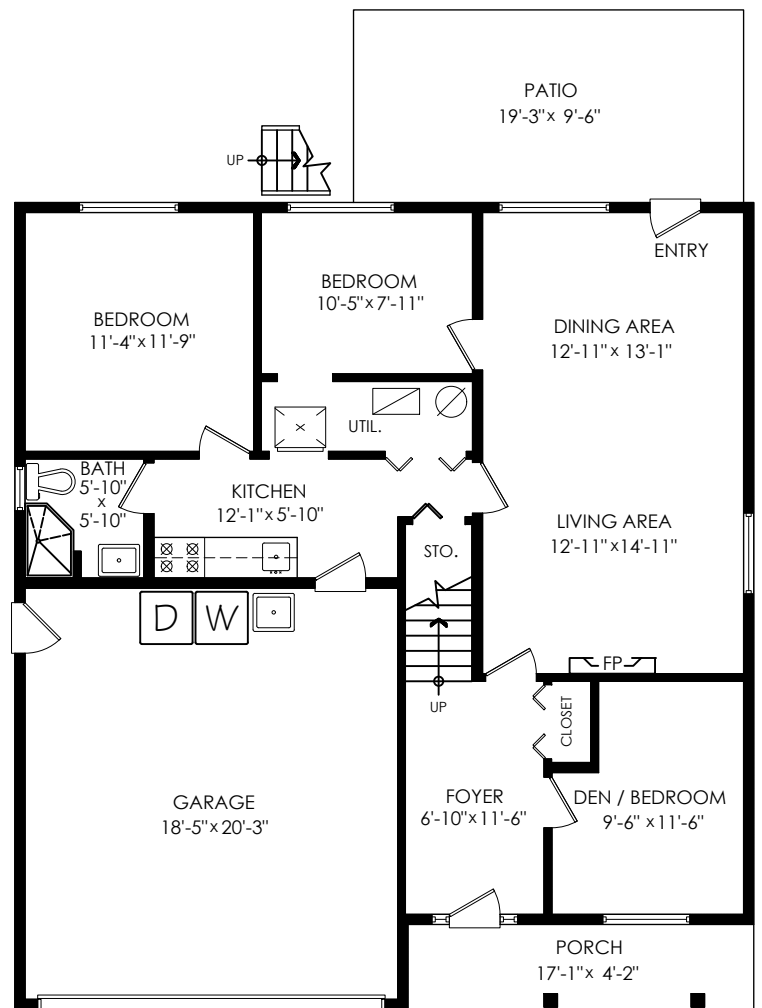
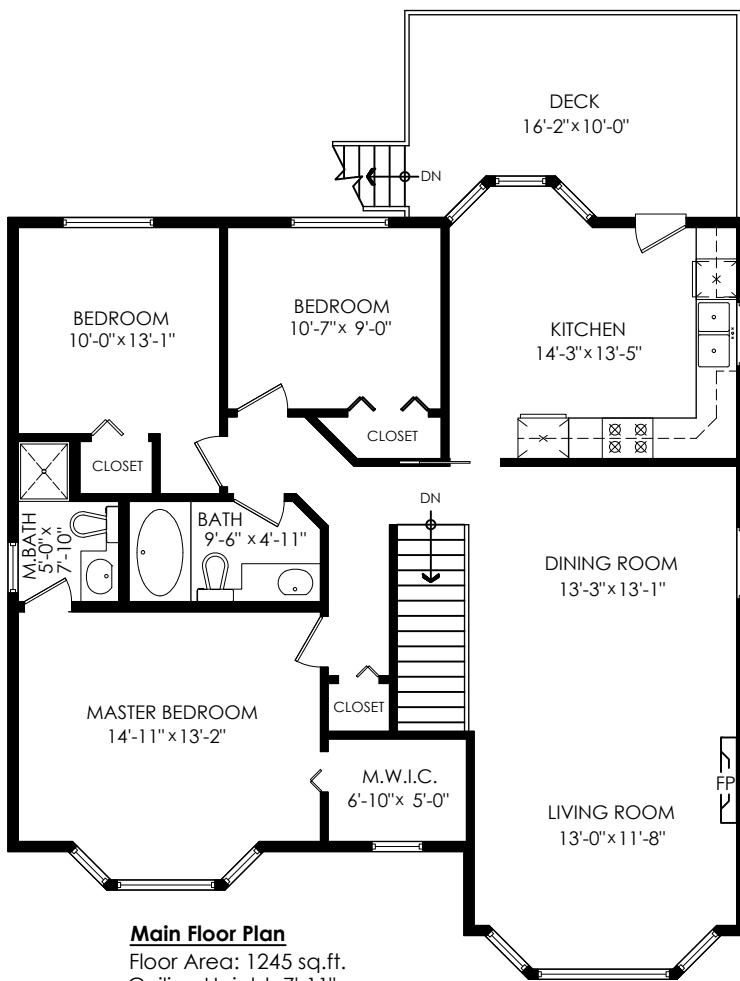
Measuring, Scanning, Design & Permits | 604-329-5788



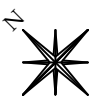
# 18923 124 Ave, Pitt Meadows

Main Floor:	1,245 sq.ft.
Lower Floor:	985 sq.ft.
<b>Total:</b>	<b>2,230 sq.ft.</b>

Garage:	395 sq.ft.
Patio:	183 sq.ft.
Deck:	151 sq.ft.
Porch:	72 sq.ft.
<b>Total Extras:</b>	<b>801 sq.ft.</b>



E&O Insured. Total square foot calculated to gross unit area. SQFT based on interior measurements to exterior walls, not taken from original blueprints, may include unfinished area. This is for marketing purposes only and is not intended for architectural/construction use. All details, sizes & placements should be considered approximate within +/- 2% tolerance. [www.PixlWorks.com](http://www.PixlWorks.com)



Measurements, Design & Scanning | 604-329-5788



Houses:

Total square footage is calculated to the outside of exterior walls.

Room sizes are dimensioned to the inside of the walls. This is because you need to know what you can fit in that room. When you add up the total of the room sizes it will not equal the total square footage of the property. This method of adding up room sizes will not account for wall thickness, interior hallways, exterior wall thickness, closets and many other areas that are included is total sqft.

Any space that is not suitable for year-round use or has a ceiling height of less than 4 feet will not be considered living space. An example of this includes a deck, garage or attic. If there isn't heat, insulation or room for an adult to stand, then it will not be included in the living space.

Cantilevered fireplaces, chimneys and plant windows are also not considered living space.

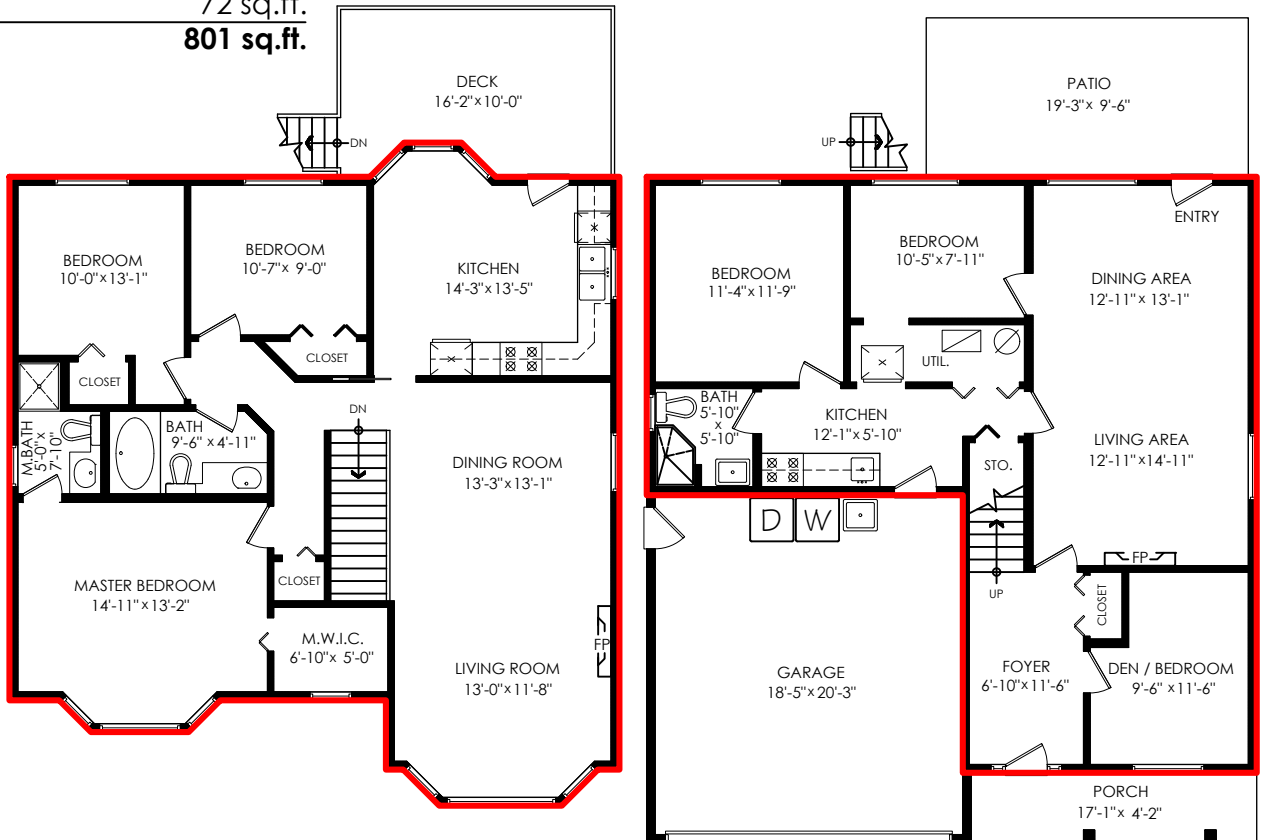
Included in the living space will be the measurements for stair treads for the floor they service as well as the space under the lowest floor's stairs.

Areas open to the floor below (also known as double height ceilings) are not considered living space because there is no floor.

Main Floor:	1,245 sq.ft.
Lower Floor:	985 sq.ft.
<b>Total:</b>	<b>2,230 sq.ft.</b>

**18923 124 Ave,  
Pitt Meadows**

Garage:	395 sq.ft.
Patio:	183 sq.ft.
Deck:	151 sq.ft.
Porch:	72 sq.ft.
<b>Total Extras:</b>	<b>801 sq.ft.</b>



**Main Floor Plan**  
Floor Area: 1245 sq.ft.  
Ceiling Height: 7'-11"

**Lower Floor Plan**  
Floor Area: 985 sq.ft.  
Ceiling Height: 8'