

AXFORD

REAL ESTATE & PROPERTY MANAGEMENT GROUP



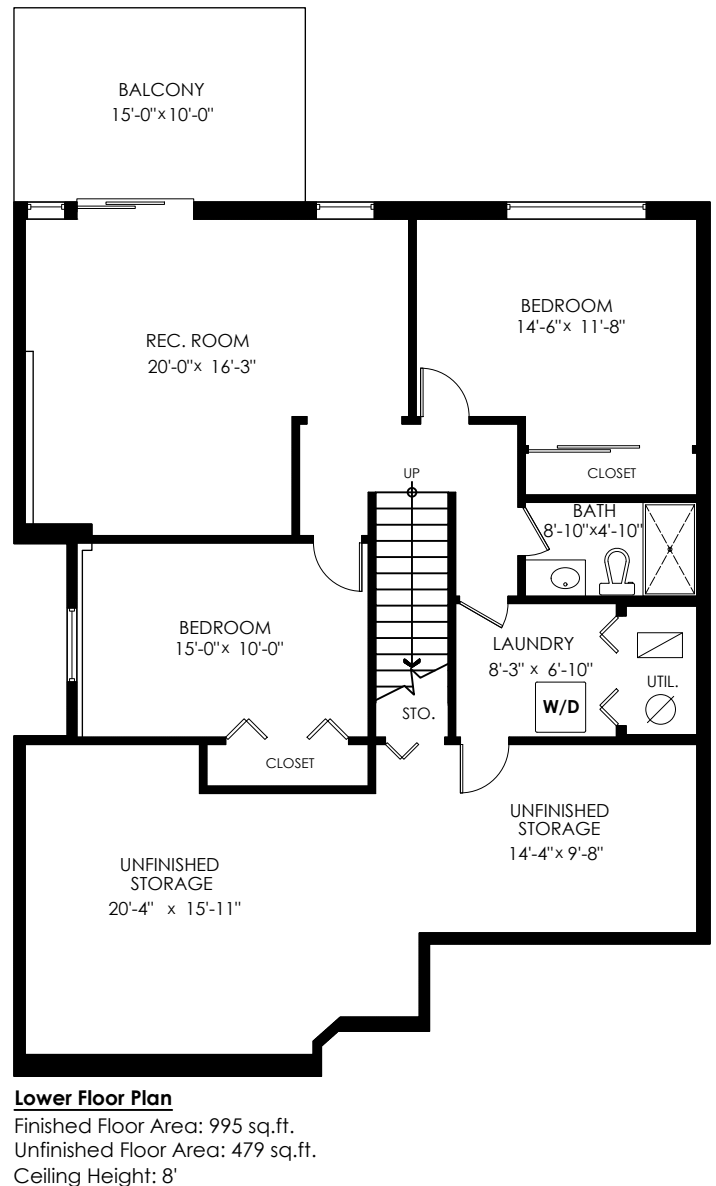
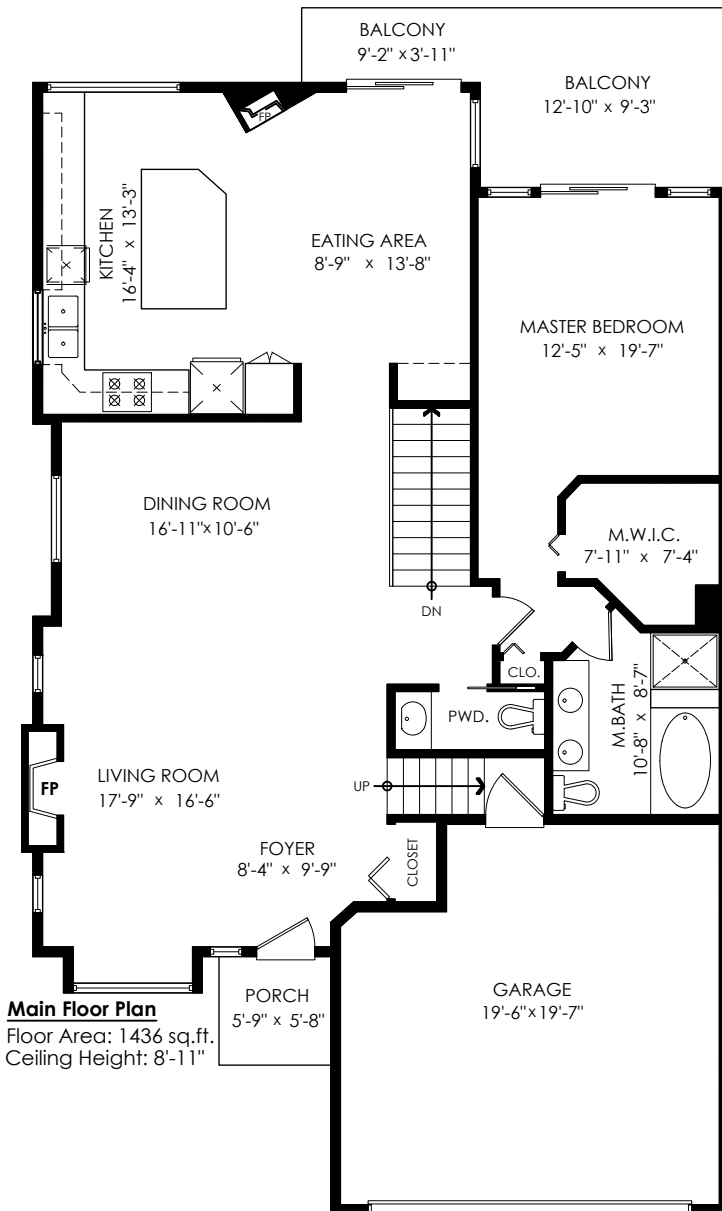
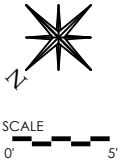
778-355-0116
info@theaxfords.com
www.theaxfords.com

44-2979 Panorama Dr, Coquitlam

Main Floor: 1,436 sq.ft.
Finished Lower Floor: 995 sq.ft.
Sub Total: 2,431 sq.ft.

Unfinished Floor: 479 sq.ft.
Total: 2,910 sq.ft.

Garage: 383 sq.ft.
Balconies: 304 sq.ft.
Porch: 32 sq.ft.
Total Extras: 719 sq.ft.

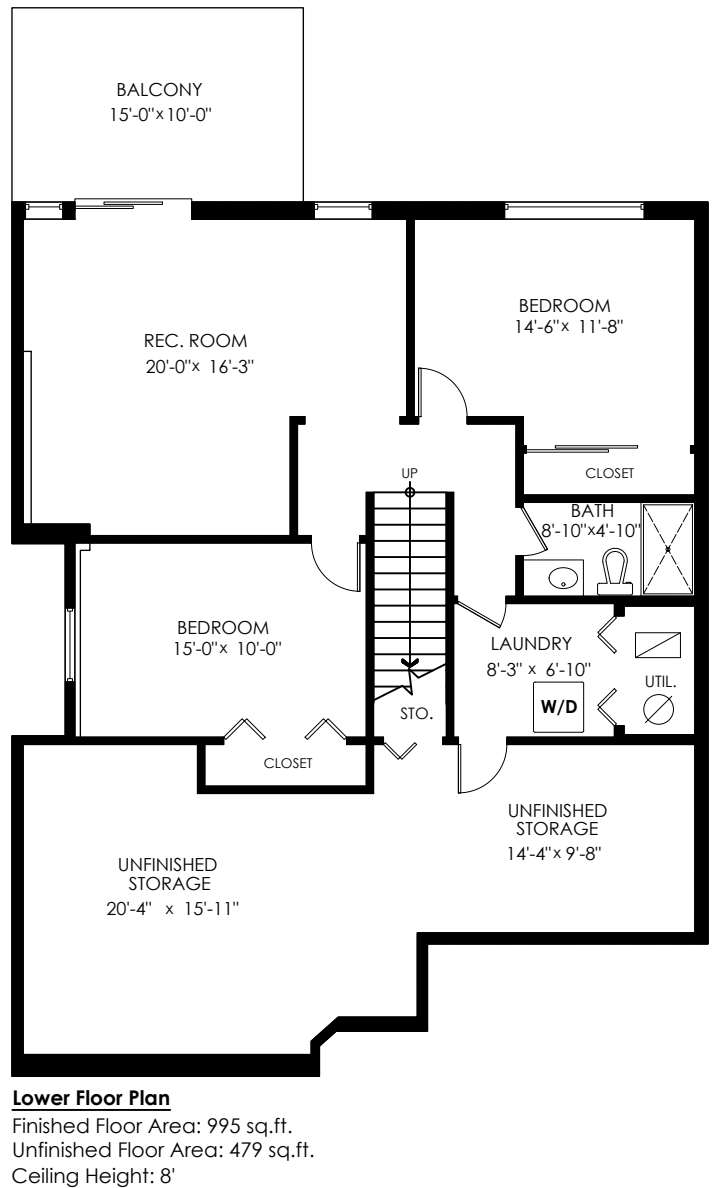
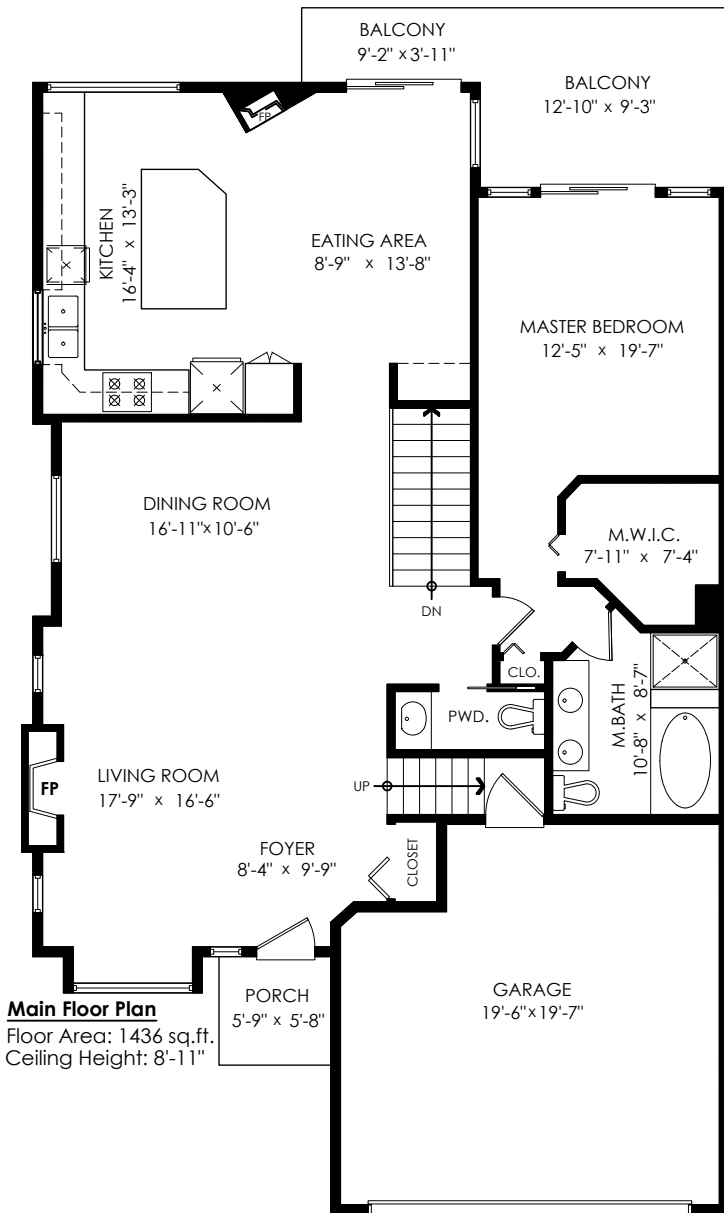
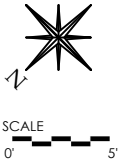


44-2979 Panorama Dr, Coquitlam

Main Floor: 1,436 sq.ft.
 Finished Lower Floor: 995 sq.ft.
Sub Total: 2,431 sq.ft.

Unfinished Floor: 479 sq.ft.
Total: 2,910 sq.ft.

Garage: 383 sq.ft.
 Balconies: 304 sq.ft.
 Porch: 32 sq.ft.
Total Extras: 719 sq.ft.





**44-2979 Panorama Dr,
Coquitlam**

INFO@COTALA.COM
(604) 514-9589
WWW.COTALA.COM

Houses:

Total square footage is calculated to the outside of exterior walls.

Room sizes are dimensioned to the inside of the walls. This is because you need to know what you can fit in that room. When you add up the total of the room sizes it will not equal the total square footage of the property. This method of adding up room sizes will not account for wall thickness, interior hallways, exterior wall thickness, closets and many other areas that are included is total sqft.

Any space that is not suitable for year-round use or has a ceiling height of less than 4 feet will not be considered living space. An example of this includes a deck, garage or attic. If there isn't heat, insulation or room for an adult to stand, then it will not be included in the living space.

Cantilevered fireplaces, chimneys and plant windows are also not considered living space.

Included in the living space will be the measurements for stair treads for the floor they service as well as the space under the lowest floor's stairs.

Areas open to the floor below (also known as double height ceilings) are not considered living space because there is no floor.

Main Floor:	1,436 sq.ft.
Finished Lower Floor:	995 sq.ft.
Sub Total:	2,431 sq.ft.

Unfinished Floor:	479 sq.ft.
Total:	2,910 sq.ft.

Garage:	383 sq.ft.
Balconies:	304 sq.ft.
Porch:	32 sq.ft.
Total Extras:	719 sq.ft.

