

1658 Salisbury Avenue, Port Coquitlam

LISTING features



AXFORD

REAL ESTATE & PROPERTY MANAGEMENT GROUP

778-355-0116
info@theaxfords.com
www.theaxfords.com

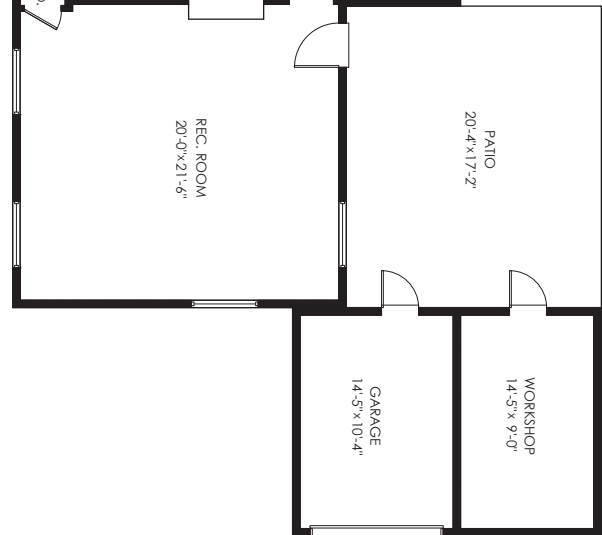
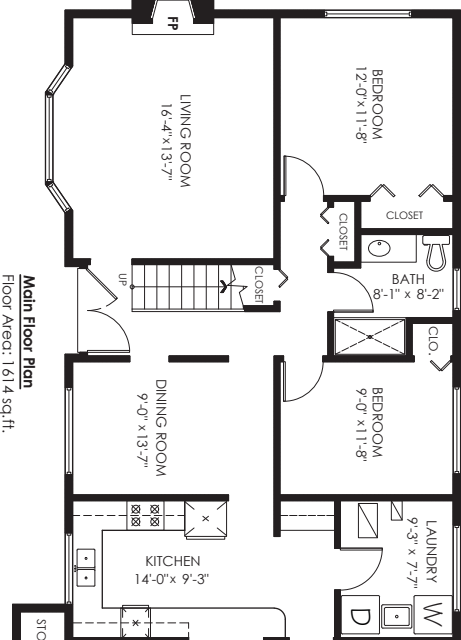
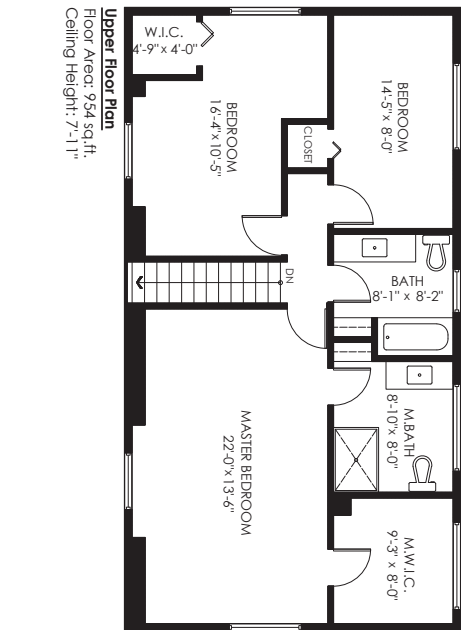


AXFORD

REAL ESTATE & PROPERTY MANAGEMENT GROUP

ROYAL LEPAGE
Sterling Realty
778-355-0116
info@theaxfords.com
www.theaxfords.com

Main Floor: 1,614 sq. ft.
Upper Floor: 954 sq. ft.
Total: 2,568 sq. ft.
Detached Garage: 167 sq. ft.
Workshop: 154 sq. ft.
Patio: 350 sq. ft.
Total Extras: 671 sq. ft.

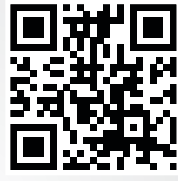


1658 Salisbury Avenue,
Port Coquitlam

Measurements, Design & Scanning | 604-329-5788
www.PixlWorks.com

The enclosed information while deemed to be correct, is not guaranteed.
This communication is not intended to solicit properties already listed for sale.

Produced and printed by **cotala** CROSS MEDIA www.cotala.com



TAKE THE TOUR

1658 Salisbury Avenue, Port Coquitlam



Lovely Cape Cod 2 story home on corner property. Immaculate with lots of reno's done and load of parking with lane access. Features: alarm system, oak Parquet floors, detached garage + workshop, 12 years remaining on roof warranty, air conditioning, potential to sub divide into 2 lots. Close to amenities.



Price	\$1,100,000
Tax	\$4075.68/2019
Lot	7,906 sf
Size	2,568 sf
Bedrooms	5
Bathrooms	3