

5 - 2120 Central Avenue, Port Coquitlam

# LISTING features



# AXFORD

REAL ESTATE & PROPERTY MANAGEMENT GROUP

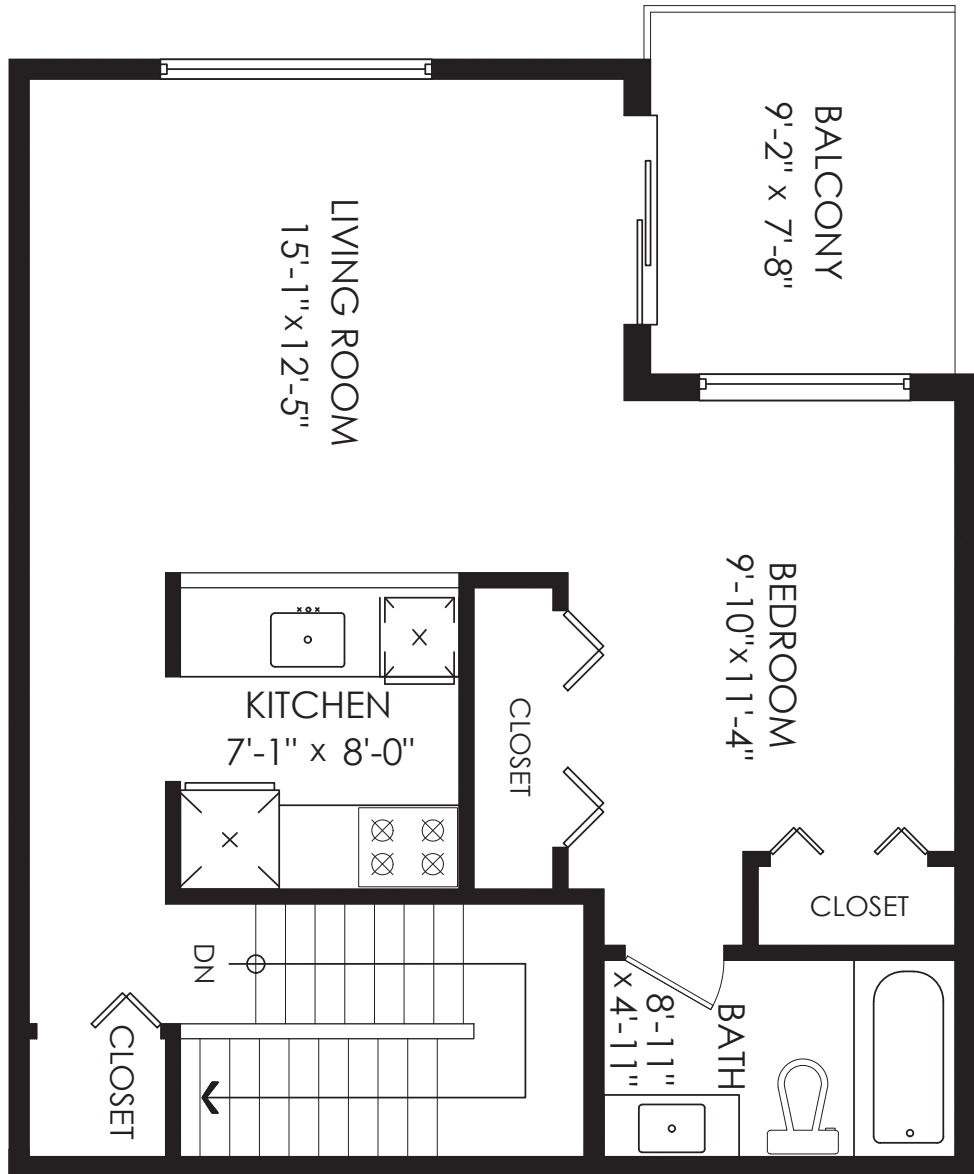
778-355-0116  
info@theaxfords.com  
www.theaxfords.com



# AXFORD

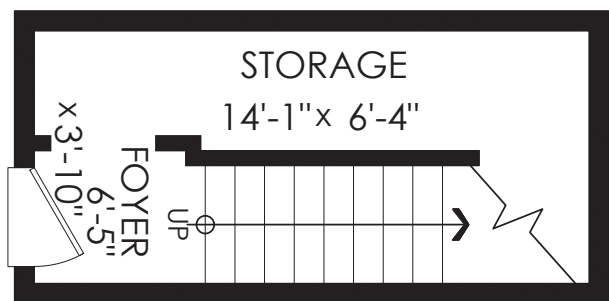
REAL ESTATE & PROPERTY MANAGEMENT GROUP

778-355-0116  
info@theaxfords.com  
www.theaxfords.com



## Main Floor Plan

Floor Area: 624 sq.ft.  
Ceiling Height: 8'-0"



## Entry Floor Plan

Floor Area: 111 sq.ft.  
Ceiling Height: 8'-0"

## #5-2120 Central Ave, Port Coquitlam

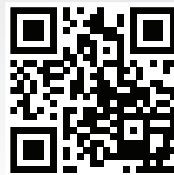
Main Floor:	624 sq.ft.
Entry Floor:	111 sq.ft.
<b>Total:</b>	<b>735 sq.ft.</b>
Balcony:	70 sq.ft.
<b>Total Extras:</b>	<b>70 sq.ft.</b>



E&O Insured for \$3,000,000. Total square foot calculated to gross unit area. SQFT based on interior measurements to exterior walls, not taken from original blueprints, may include unfinished area. This is for marketing purposes only and is not intended for architectural/construction use. All details, sizes & placements should be considered approximate within +/- 2% tolerance. www.DraftOnSite.com

The enclosed information while deemed to be correct, is not guaranteed. This communication is not intended to solicit properties already listed for sale.

Produced and printed by www.cotala.com



TAKE THE TOUR



COMPLETELY RENOVATED - This top floor large 735 sqft 1 bedroom townhouse style unit has its own separate entrance. North facing open floor plan that is bright and private with lots of windows and sliding doors to a good size covered balcony. At the entrance you have your own foyer, 14' long in-suite storage and new carpeted stairs up to the main living area. Renos include white shaker cabinets, high-end silestone quartz counters with overhang for bar stools, Italian marble tile backsplash, premium s/s appliances, new flooring throughout with modern vinyl plank, contemporary bathroom vanity, new paint and baseboards. Brand new roof and newly painted exterior. Great location close to new rec centre, transit and west coast express. 1 parking. Rentals allowed and pets with restrictions.



**AXFORD**  
REAL ESTATE & PROPERTY MANAGEMENT GROUP

Price	\$339,900
Tax	\$1210.51/2019
Maint. Fee	\$226
Size	735 sf
Bedrooms	1
Bathrooms	1