

1658 Salisbury Avenue, Port Coquitlam

LISTING
features



AXFORD

REAL ESTATE & PROPERTY MANAGEMENT GROUP

778-355-0116
info@theaxfords.com
www.theaxfords.com

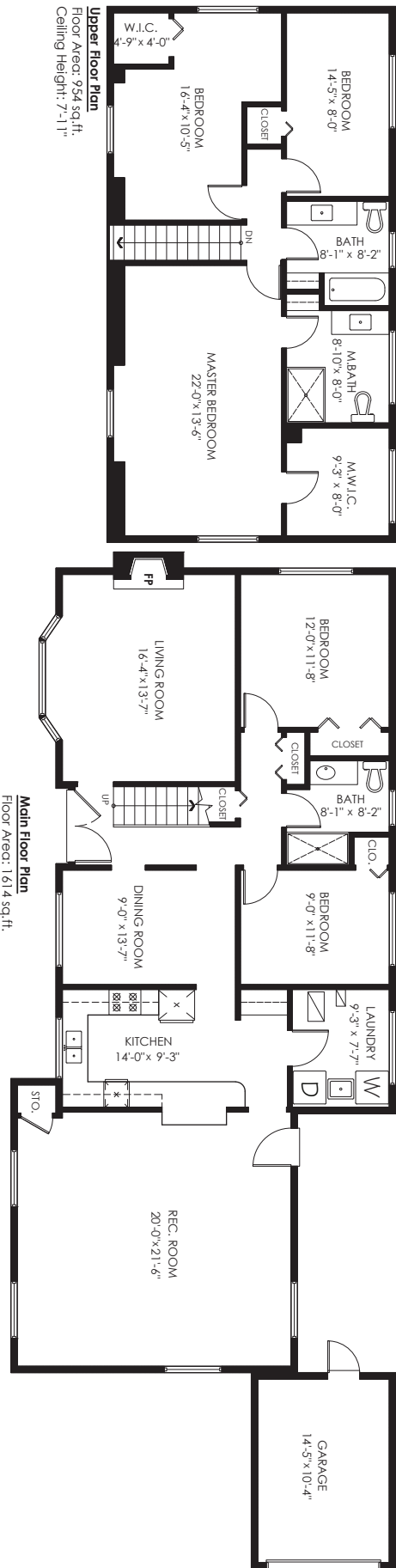


AXFORD

REAL ESTATE & PROPERTY MANAGEMENT GROUP

ROYAL LEPAGE
Sterling Realty
778-355-0116
info@theaxfords.com
www.theaxfords.com

Main Floor: 1,614 sq. ft.
Upper Floor: 954 sq. ft.
Total: 2,568 sq. ft.
Detached Garage: 167 sq. ft.
Workshop: 154 sq. ft.
Patio: 350 sq. ft.
Total Extras: 671 sq. ft.

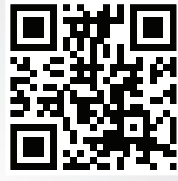


**1658 Salisbury Avenue,
Port Coquitlam**

Measurements, Design & Scanning | 604-329-5788
E&C insured for \$3,000,000. Total square foot calculated to gross unit area. SQFT based on interior measurements to exterior walls, not taken from original blueprints; may include unfinished area. This is for marketing purposes only and is not intended for architectural construction use. All details, sizes & placements should be considered approximate within +/- 2% tolerance. www.PixlWorks.com

Produced and printed by **cotala** CROSS MEDIA www.cotala.com

The enclosed information while deemed to be correct, is not guaranteed. This communication is not intended to solicit properties already listed for sale.



TAKE THE TOUR

1658 Salisbury Avenue, Port Coquitlam



Lovely Cape Cod 2 story home on corner property. Immaculate with lots of reno's done and load of parking with lane access. Features: alarm system, oak Parquet floors, detached garage + workshop, 12 years remaining on roof warranty, air conditioning, potential to sub divide into 2 lots. Close to amenities.



Price	\$1,020,000
Tax	\$4075.68/2019
Lot	7,906 sf
Size	2,568 sf
Bedrooms	5
Bathrooms	3