

AXFORD

REAL ESTATE & PROPERTY MANAGEMENT GROUP

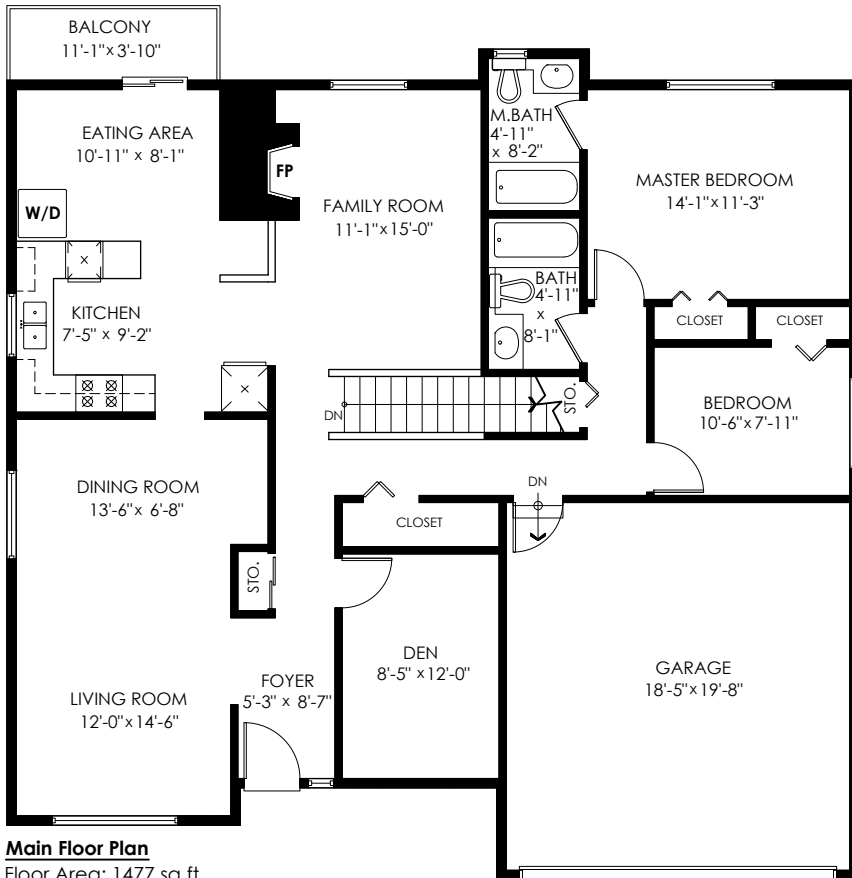
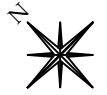


778-355-0116
info@theaxfords.com
www.theaxfords.com

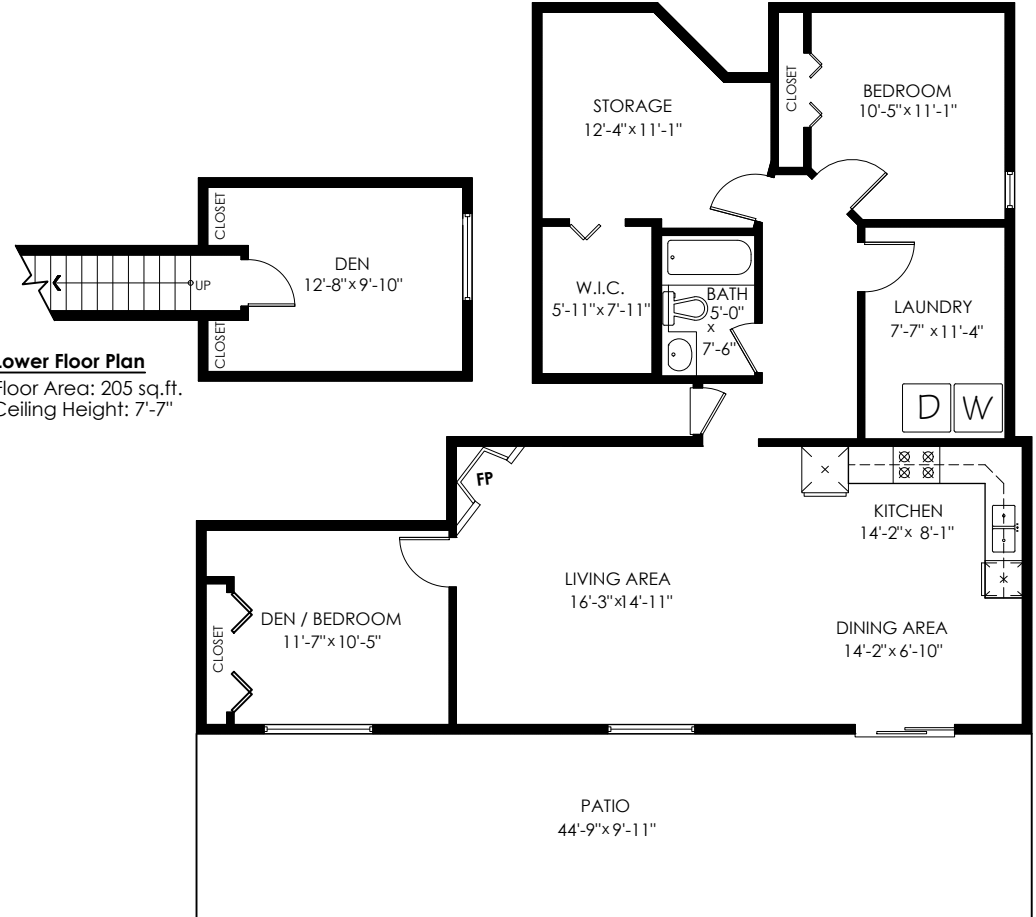
Main Floor: 1,477 sq.ft.
Lower Floor: 205 sq.ft.
Basement Floor: 1,212 sq.ft.
Total: 2,894 sq.ft.

Garage: 385 sq.ft.
Patio: 444 sq.ft.
Balcony: 46 sq.ft.
Total Extras: 875 sq.ft.

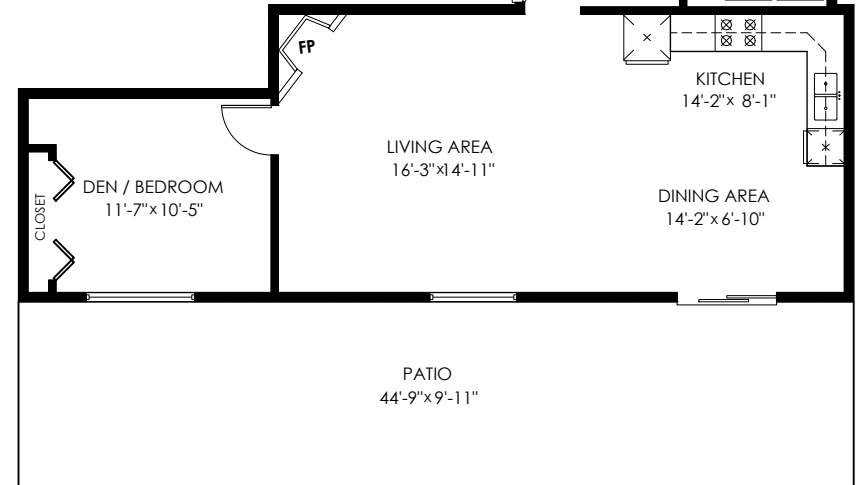
**1182 Fraserview Street,
Port Coquitlam**



Lower Floor Plan
Floor Area: 205 sq.ft.
Ceiling Height: 7'-7"



Basement Floor Plan
Floor Area: 1212 sq.ft.
Ceiling Height: 7'-6"



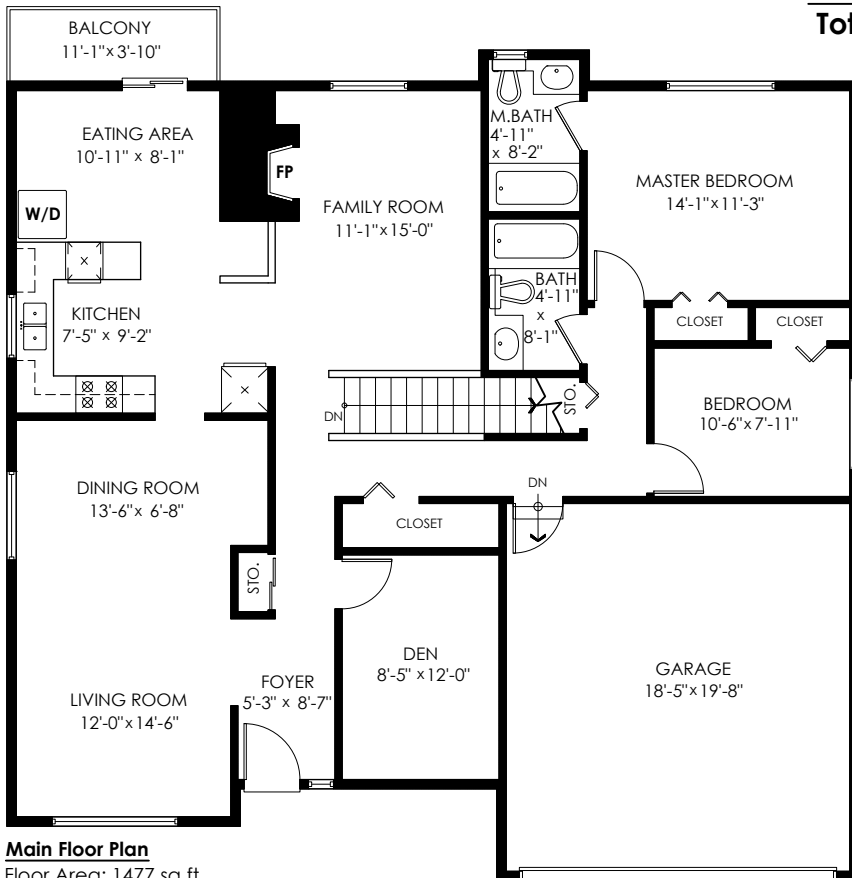
Measuring, Scanning, Design & Permits | 604-876-3738

1182 Fraserview Street, Port Coquitlam

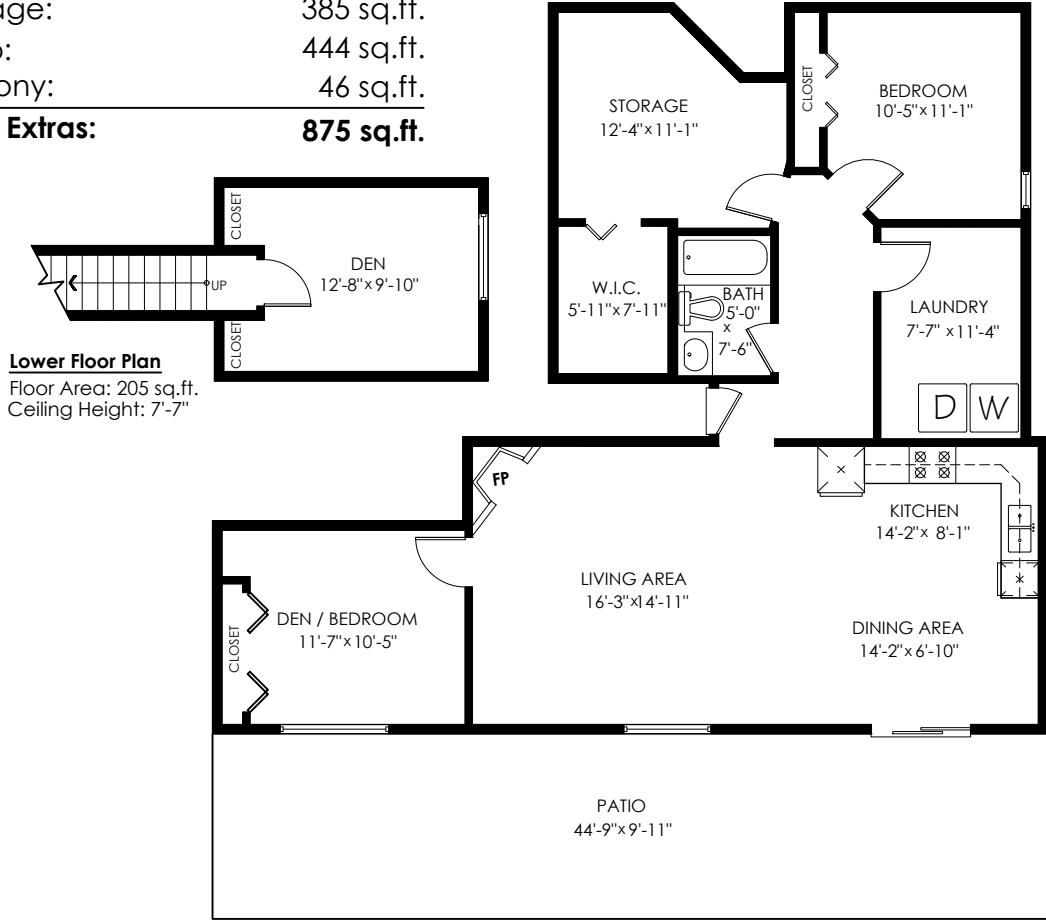


Main Floor: 1,477 sq.ft.
 Lower Floor: 205 sq.ft.
 Basement Floor: 1,212 sq.ft.
Total: 2,894 sq.ft.

Garage: 385 sq.ft.
 Patio: 444 sq.ft.
 Balcony: 46 sq.ft.
Total Extras: 875 sq.ft.



Main Floor Plan
 Floor Area: 1477 sq.ft.
 Ceiling Height: 8'



Lower Floor Plan
 Floor Area: 205 sq.ft.
 Ceiling Height: 7'-7"

Basement Floor Plan
 Floor Area: 1212 sq.ft.
 Ceiling Height: 7'-6"

Measuring, Scanning, Design & Permits | 604-876-3738

Houses:

Total square footage is calculated to the outside of exterior walls.

Room sizes are dimensioned to the inside of the walls. This is because you need to know what you can fit in that room. When you add up the total of the room sizes it will not equal the total square footage of the property. This method of adding up room sizes will not account for wall thickness, interior hallways, exterior wall thickness, closets and many other areas that are included is total sqft.

Any space that is not suitable for year-round use or has a ceiling height of less than 4 feet will not be considered living space. An example of this includes a deck, garage or attic. If there isn't heat, insulation or room for an adult to stand, then it will not be included in the living space.

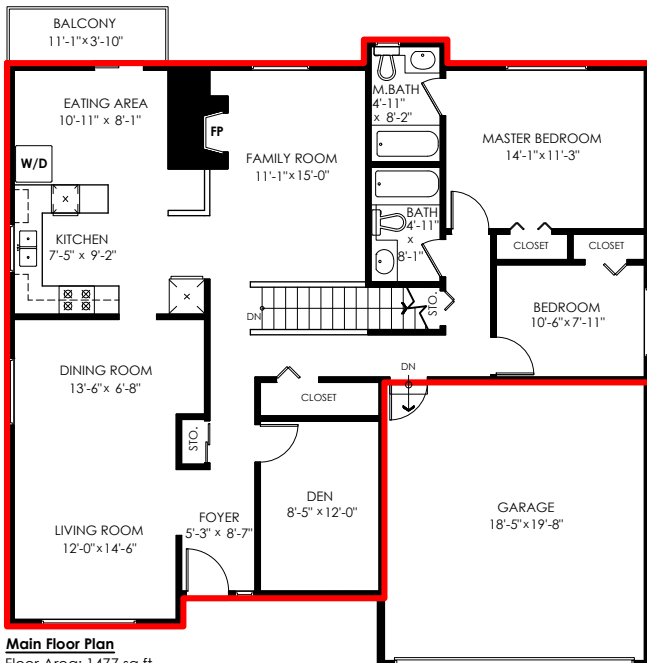
Cantilevered fireplaces, chimneys and plant windows are also not considered living space.

Included in the living space will be the measurements for stair treads for the floor they service as well as the space under the lowest floor's stairs.

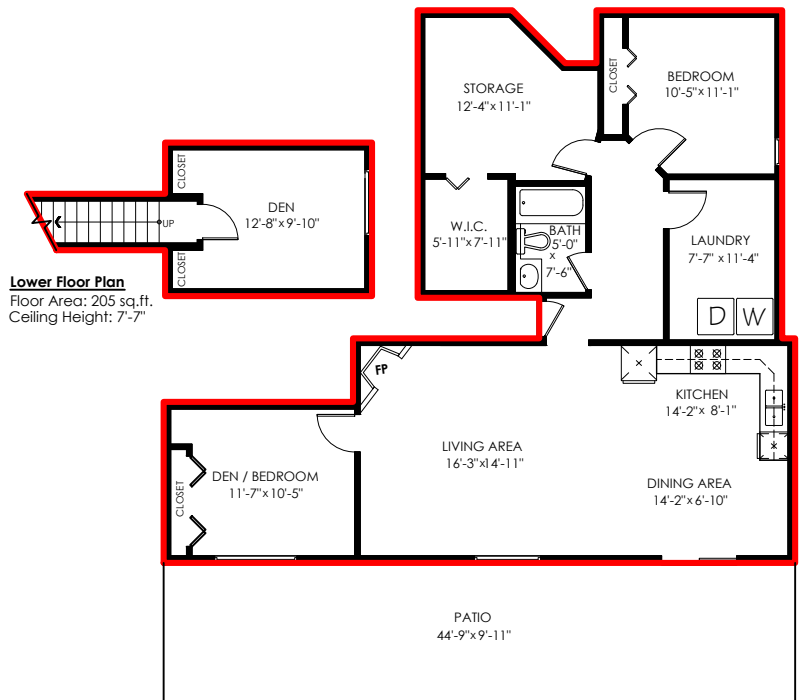
Areas open to the floor below (also known as double height ceilings) are not considered living space because there is no floor.

Main Floor:	1,477 sq.ft.
Lower Floor:	205 sq.ft.
Basement Floor:	1,212 sq.ft.
Total:	2,894 sq.ft.

Garage:	385 sq.ft.
Patio:	444 sq.ft.
Balcony:	46 sq.ft.
Total Extras:	875 sq.ft.



Main Floor Plan
 Floor Area: 1477 sq.ft.
 Ceiling Height: 8'



Lower Floor Plan
 Floor Area: 205 sq.ft.
 Ceiling Height: 7'-7"

Basement Floor Plan
 Floor Area: 1212 sq.ft.
 Ceiling Height: 7'-6"