

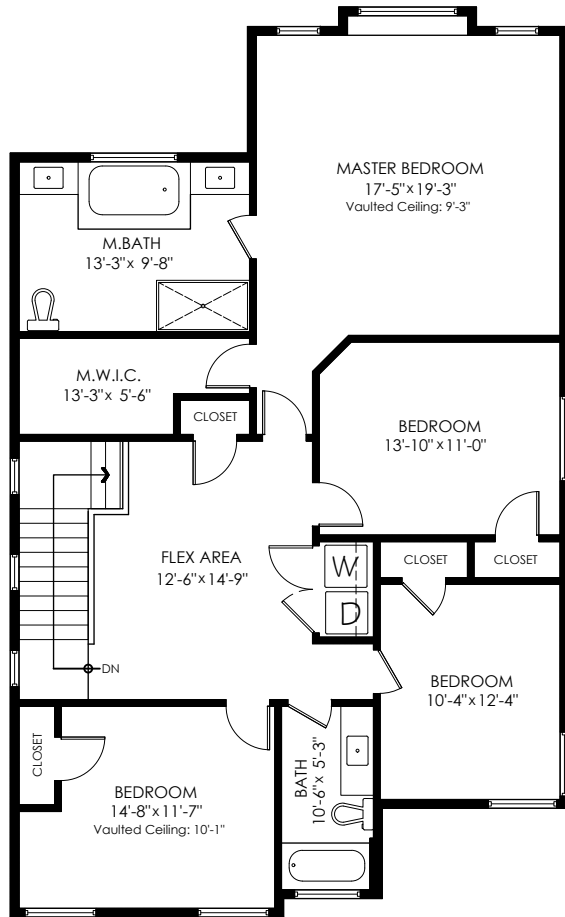
AXFORD

REAL ESTATE & PROPERTY MANAGEMENT GROUP

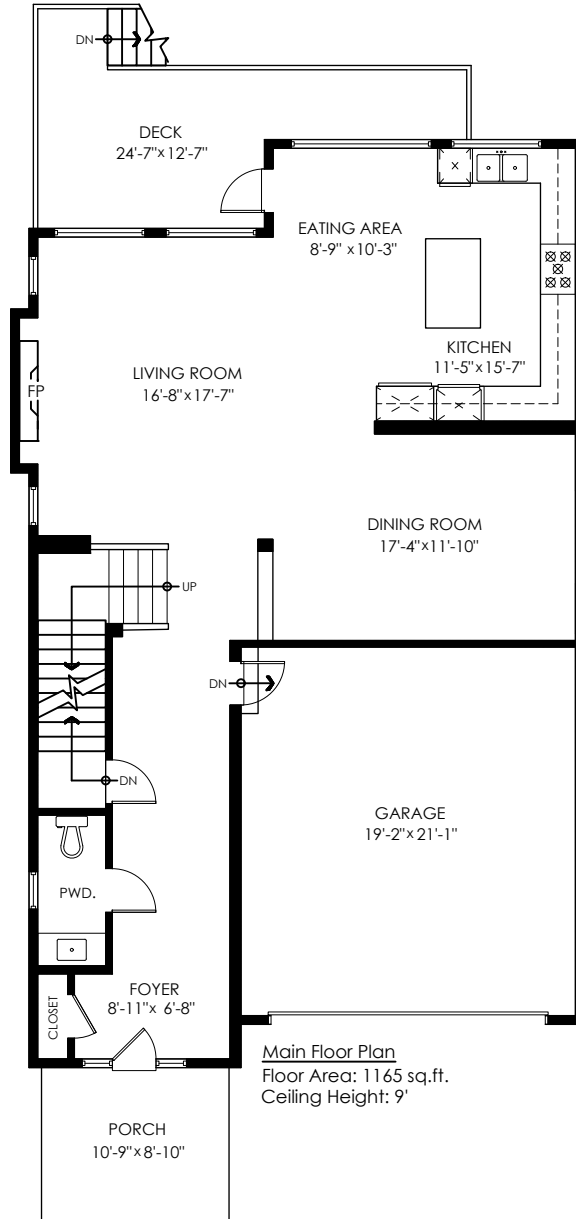


778-355-0116
info@theaxfords.com
www.theaxfords.com

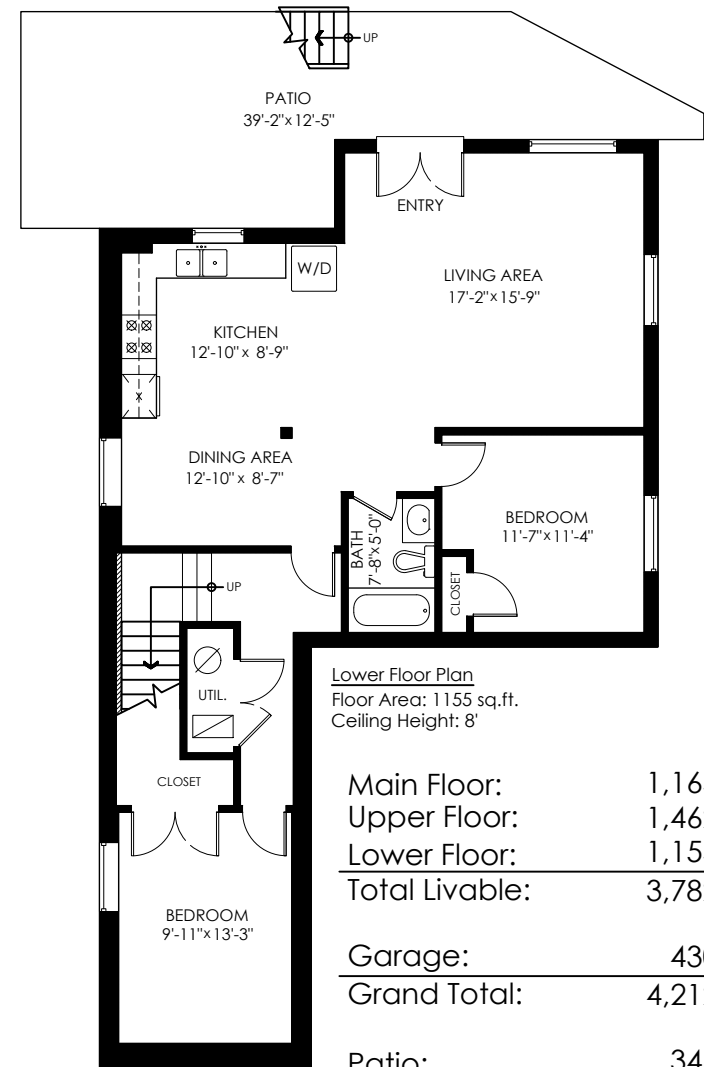
11712 236 St,
Maple Ridge



Upper Floor Plan
Floor Area: 1462 sq.ft.
Ceiling Height: 8'-1"

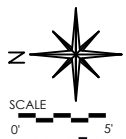


Main Floor Plan
Floor Area: 1165 sq.ft.
Ceiling Height: 9'



Lower Floor Plan
Floor Area: 1155 sq.ft.
Ceiling Height: 8'

Main Floor:	1,165 sq.ft.
Upper Floor:	1,462 sq.ft.
Lower Floor:	1,155 sq.ft.
Total Livable:	3,782 sq.ft.
<hr/>	
Garage:	430 sq.ft.
Grand Total:	4,212 sq.ft.
<hr/>	
Patio:	346 sq.ft.
Deck:	178 sq.ft.
Porch:	95 sq.ft.
Total Extras:	619 sq.ft.



E&O Insured. Total square foot calculated to gross unit area. SQFT based on interior measurements to exterior walls, not taken from original blueprints, may include unfinished area. This is for marketing purposes only and is not intended for architectural/construction use. All details, sizes & placements should be considered approximate within +/- 2% tolerance. www.PixiWorks.com

MEASURED ON: (2021-08-07)

Measuring, Scanning, & Design | 604-329-5788

