

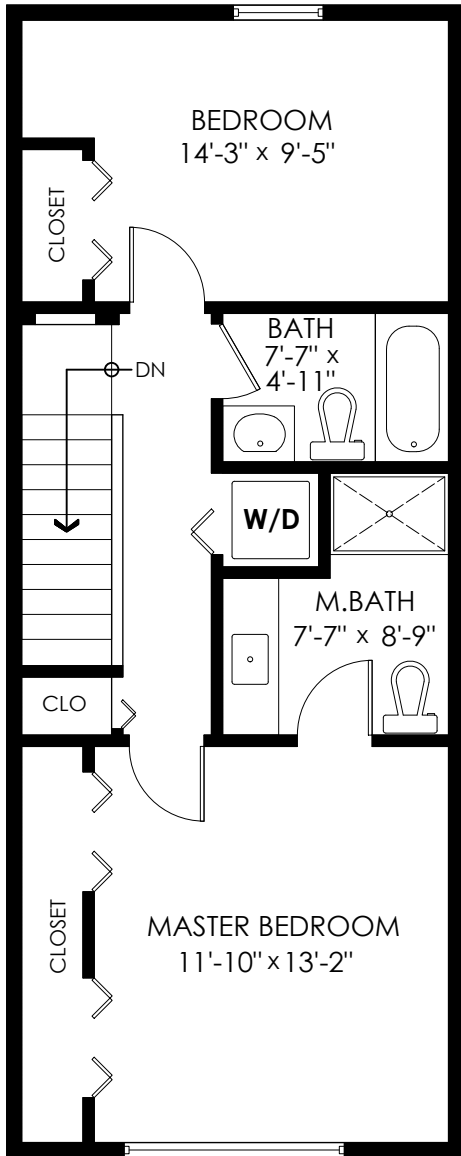
# 88-3010 Riverbend Drive, Coquitlam



Main Floor: 587 sq.ft.  
 Upper Floor: 587 sq.ft.  
 Entry Floor: 116 sq.ft.  
**Total Livable: 1,290 sq.ft.**

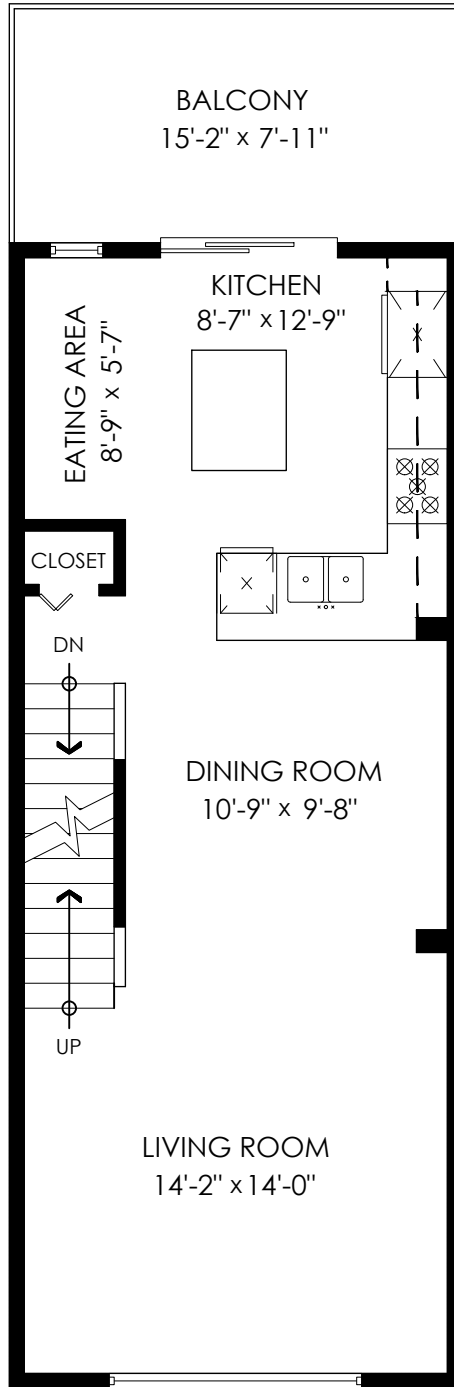
Garage/ Storages: 462 sq.ft.  
**Grand Total: 1,752 sq.ft.**

Balcony: 121 sq.ft.



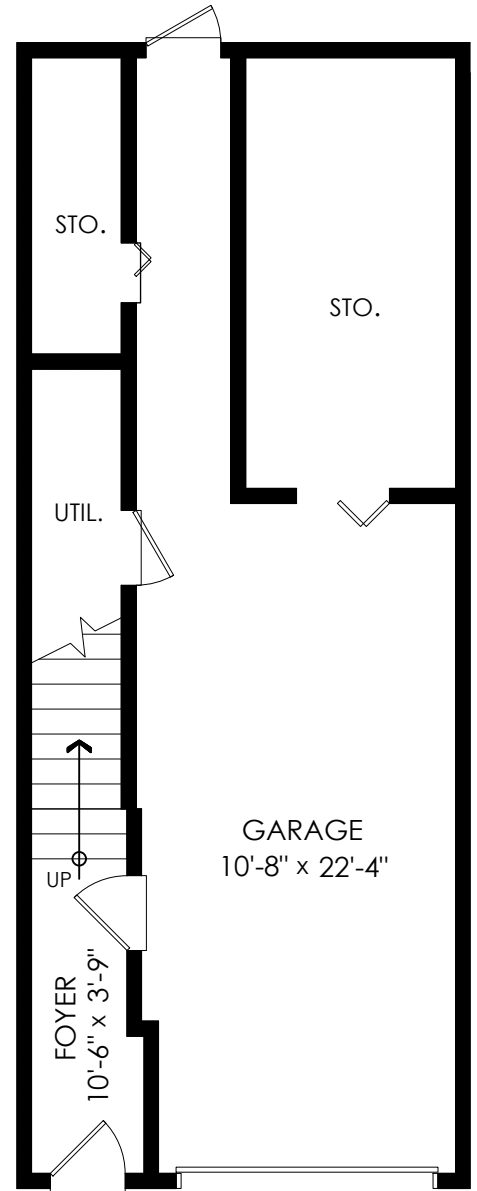
### Upper Floor Plan

Floor Area: 587 sq.ft.  
 Ceiling Height: 8'-1"



### Main Floor Plan

Floor Area: 587 sq.ft.  
 Ceiling Height: 9'-1"



### Entry Floor Plan

Floor Area: 116 sq.ft.  
 Ceiling Height: 8'-4"



cotala

E&O Insured. Total square foot calculated to gross unit area. SQFT based on interior measurements to exterior walls, not taken from original blueprints, may include unfinished area.

This is for marketing purposes only and is not intended for architectural/construction use. All details, sizes & placements should be considered approximate within +/- 2% tolerance. www.PixiWorks.com

MEASURED ON: (2021-07-12)

Measurements, Design & Scanning | 604-329-5788

