

# AXFORD

REAL ESTATE & PROPERTY MANAGEMENT GROUP



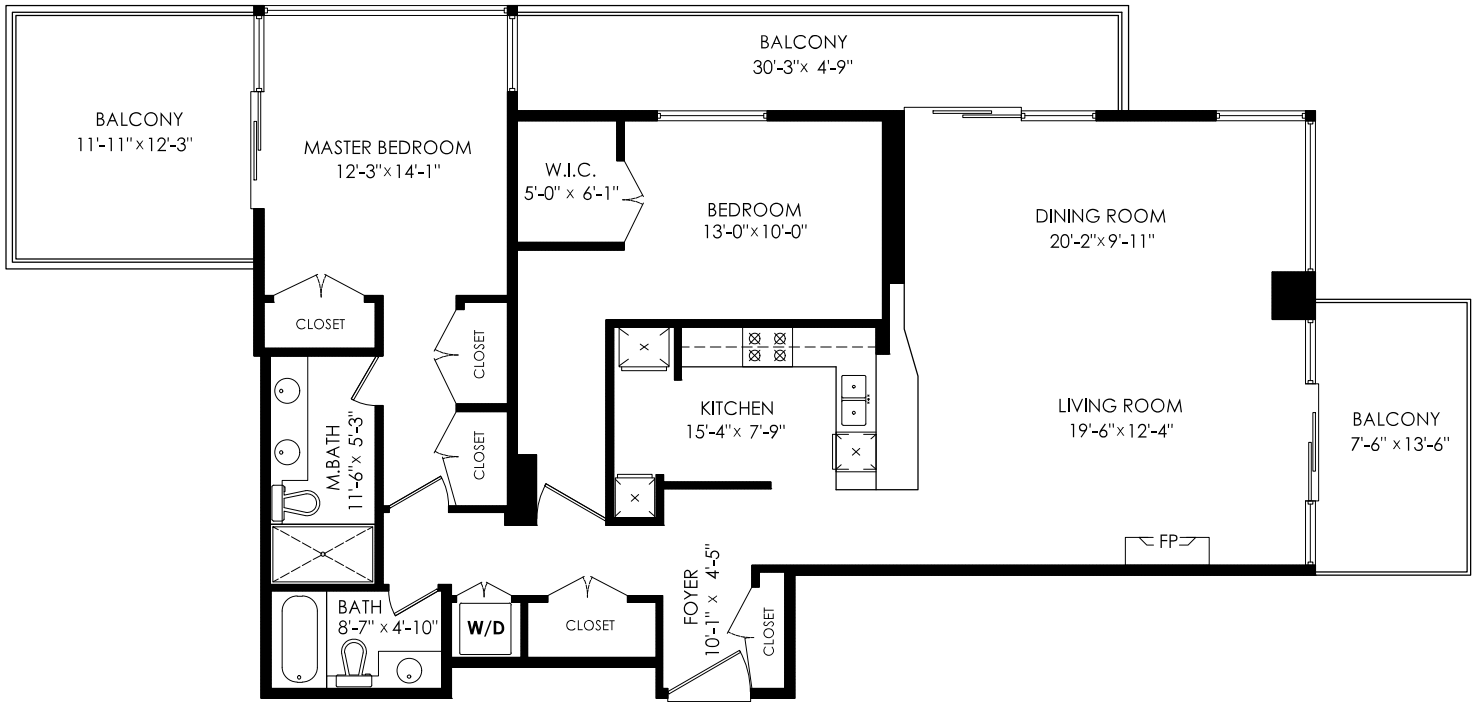
778-355-0116  
info@theaxfords.com  
www.theaxfords.com

## 2102-288 Ungless Way, Port Moody

**Floor Area:** 1,464 sq.ft.

Balconies: 395 sq.ft.

Ceiling Height: 8'-0"



**cotala**

E&O Insured. Total square foot calculated to gross unit area. SQFT based on interior measurements to exterior walls, not taken from original blueprints, may include unfinished area. This is for marketing purposes only and is not intended for architectural/construction use. All details, sizes & placements should be considered approximate within +/- 2% tolerance. www.PixlWorks.com

**MEASURED ON: (2021-08-18)**

Measuring, Scanning, & Design | 604-329-5788

