

AXFORD

REAL ESTATE & PROPERTY MANAGEMENT GROUP



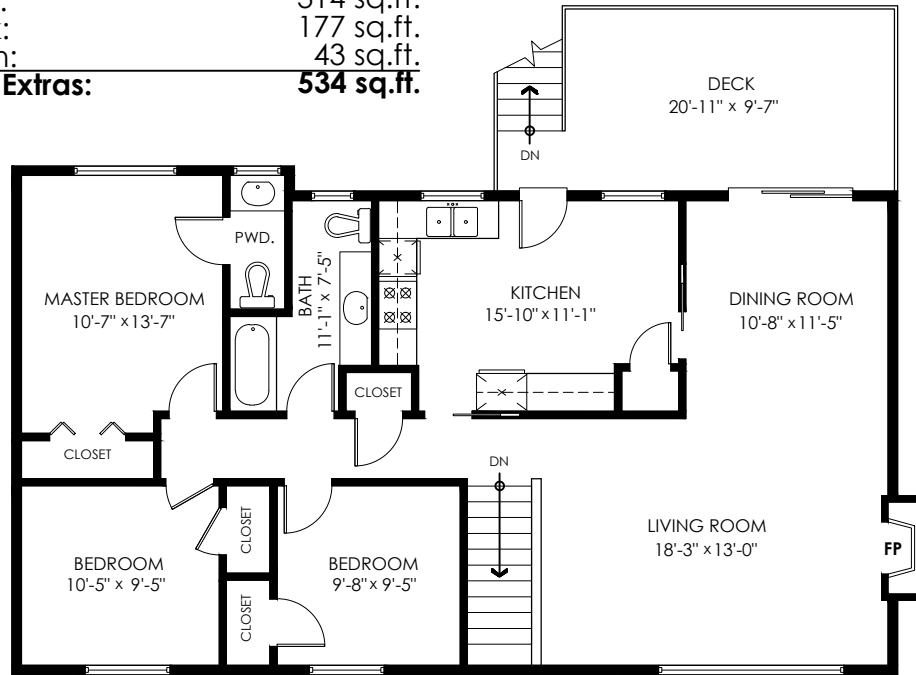
778-355-0116
info@theaxfords.com
www.theaxfords.com

3848 Killarney St,
Port Coquitlam

Main Floor: 1,208 sq.ft.
Lower Floor: 927 sq.ft.
Total Livable: 2,135 sq.ft.

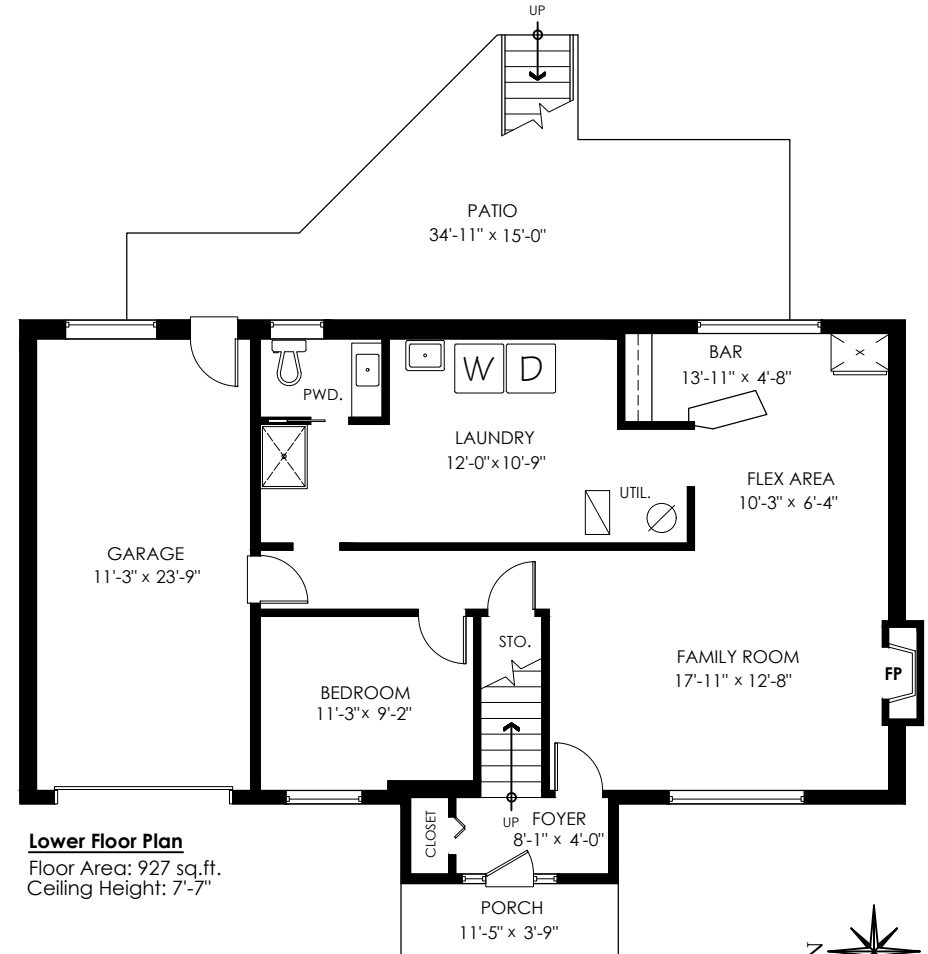
Garage: 310 sq.ft.
Grand Total: 2,445 sq.ft.

Patio: 314 sq.ft.
Deck: 177 sq.ft.
Porch: 43 sq.ft.
Total Extras: 534 sq.ft.



Main Floor Plan

Floor Area: 1208 sq.ft.
Ceiling Height: 7'-11"



Lower Floor Plan

Floor Area: 927 sq.ft.
Ceiling Height: 7'-7"



E&O Insured. Total square foot calculated to gross unit area. SQFT based on interior measurements to exterior walls, not taken from original blueprints, may include unfinished area. This is for marketing purposes only and is not intended for architectural/construction use. All details, sizes & placements should be considered approximate within +/- 2% tolerance.

info@pixlworks.com www.pixlworks.com 604.329.5788

MEASURED ON: (2022-02-25)

