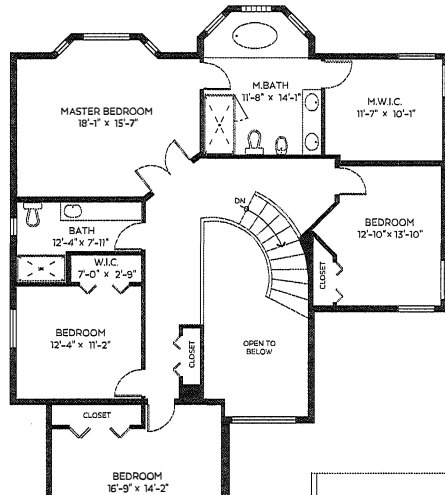


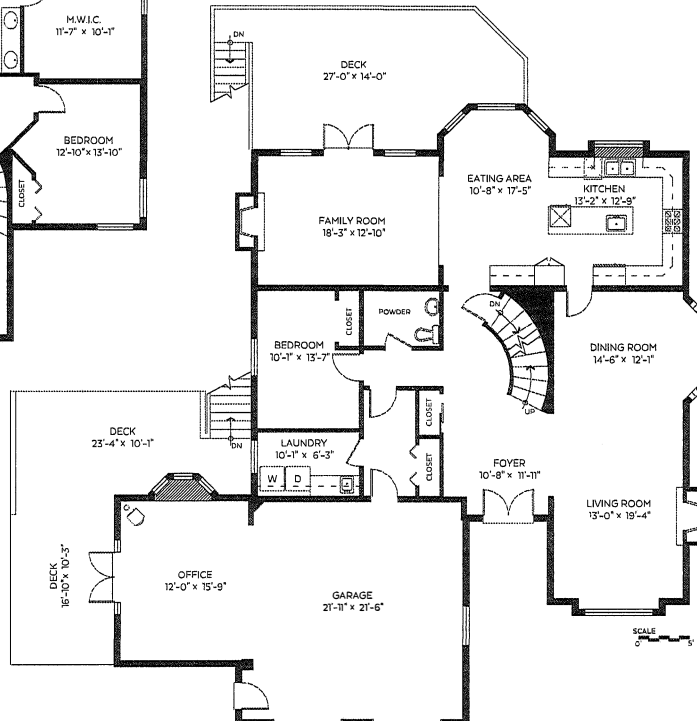
# AXFORD

REAL ESTATE & PROPERTY MANAGEMENT GROUP

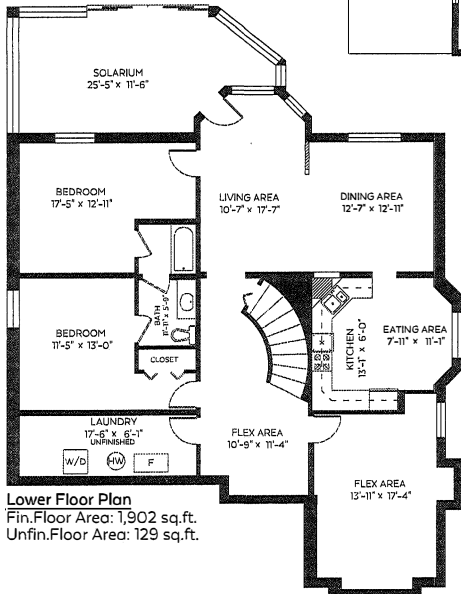
9926 180A Street,  
Surrey, B.C.



**Upper Floor Plan**  
Floor Area: 1,916 sq.ft.



**Main Floor Plan**  
Floor Area: 2,452 sq.ft.



**Lower Floor Plan**  
Fin. Floor Area: 1,902 sq.ft.  
Unfin. Floor Area: 129 sq.ft.

Main Floor:	2,452 sq.ft.
Upper Floor:	1,916 sq.ft.
Fin. Lower Floor:	1,902 sq.ft.
<b>Total:</b>	<b>6,270 sq.ft.</b>

Unfin. Lower Floor:	129 sq.ft.
<b>Grand Total:</b>	<b>6,399 sq.ft.</b>

<b>Auxiliary Area</b>	
Garage/Office:	718 sq.ft.
Decks:	744 sq.ft.
Open To Below:	168 sq.ft.