

442 Selman St, Coquitlam

AXFORD

REAL ESTATE & PROPERTY MANAGEMENT GROUP



778-355-0116
info@theaxfords.com
www.theaxfords.com

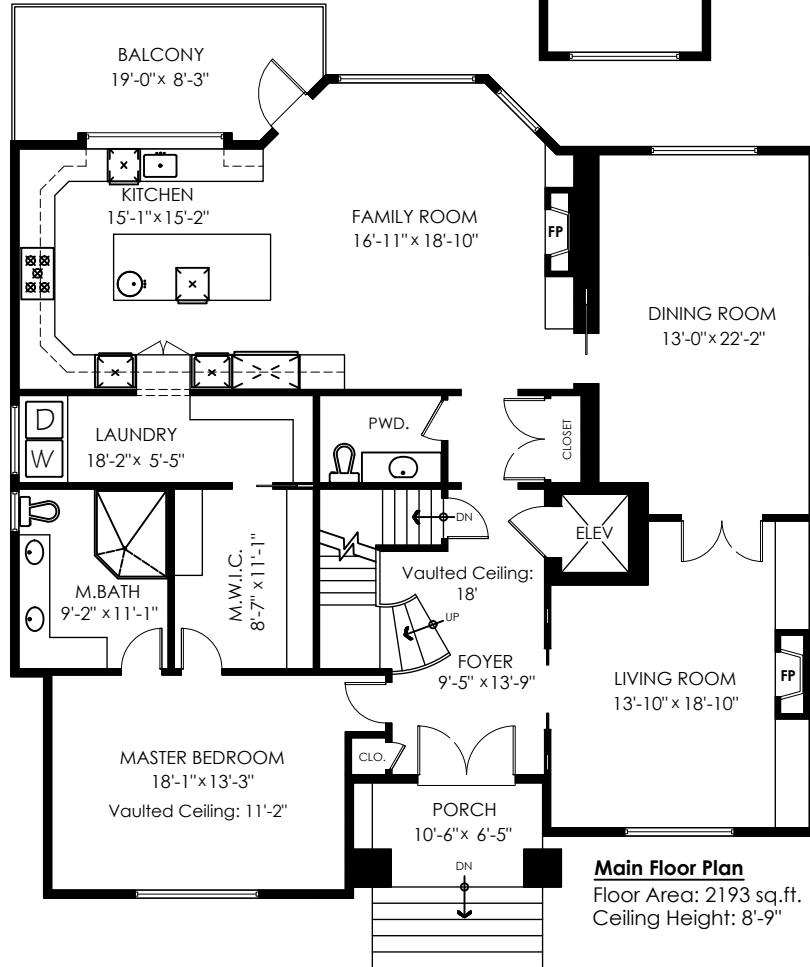
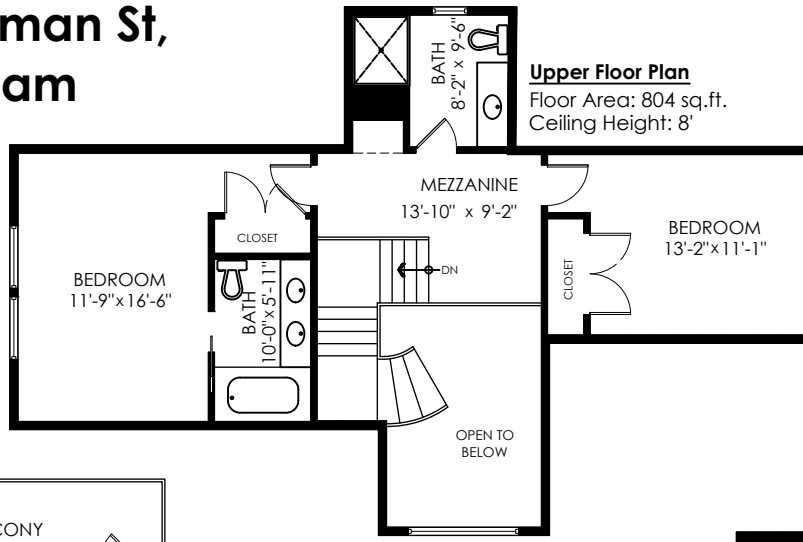
Main Floor: 2,193 sq.ft.
Upper Floor: 804 sq.ft.
Lower Floor: 1,066 sq.ft.
Total: 4,063 sq.ft.

Garages: 1,237 sq.ft.
Utility Room: 96 sq.ft.
Balcony: 144 sq.ft.
Porch: 62 sq.ft.
Total Extras: 1,539 sq.ft.

Open To Below: 133 sq.ft.

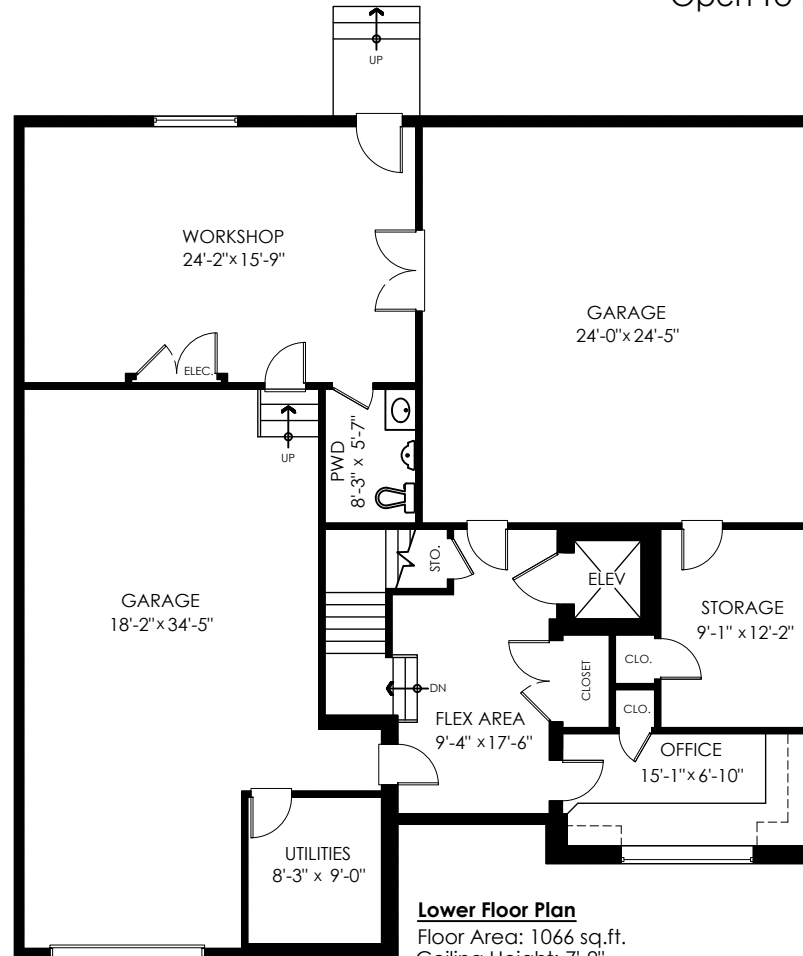
Upper Floor Plan

Floor Area: 804 sq.ft.
Ceiling Height: 8'



Main Floor Plan

Floor Area: 2193 sq.ft.
Ceiling Height: 8'-9"



Lower Floor Plan

Floor Area: 1066 sq.ft.
Ceiling Height: 7'-9"



SCALE
0' 5'

Measuring, Scanning, Design & Permits | 604-876-3738

E&O Insured for \$3,000,000. Total square foot calculated to gross unit area. SQFT based on interior measurements to exterior walls, not taken from original blueprints, may include unfinished area.

This is for marketing purposes only and is not intended for architectural/construction use. All details, sizes & placements should be considered approximate within +/- 2% tolerance. www.DraftOnSite.com