

# AXFORD

REAL ESTATE & PROPERTY MANAGEMENT GROUP



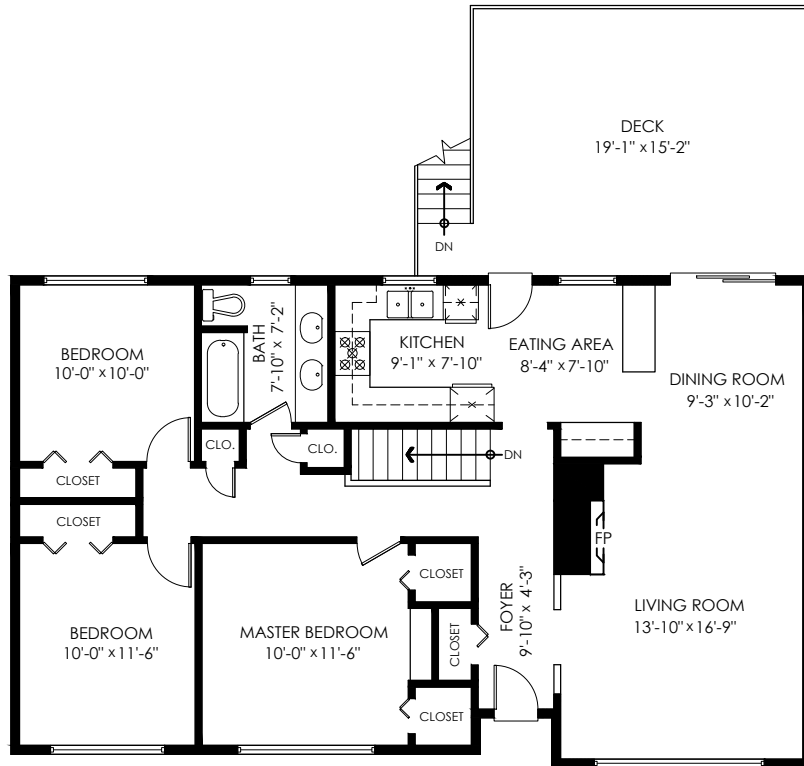
778-355-0116  
info@theaxfords.com  
www.theaxfords.com

295 Leroy St,  
Coquitlam

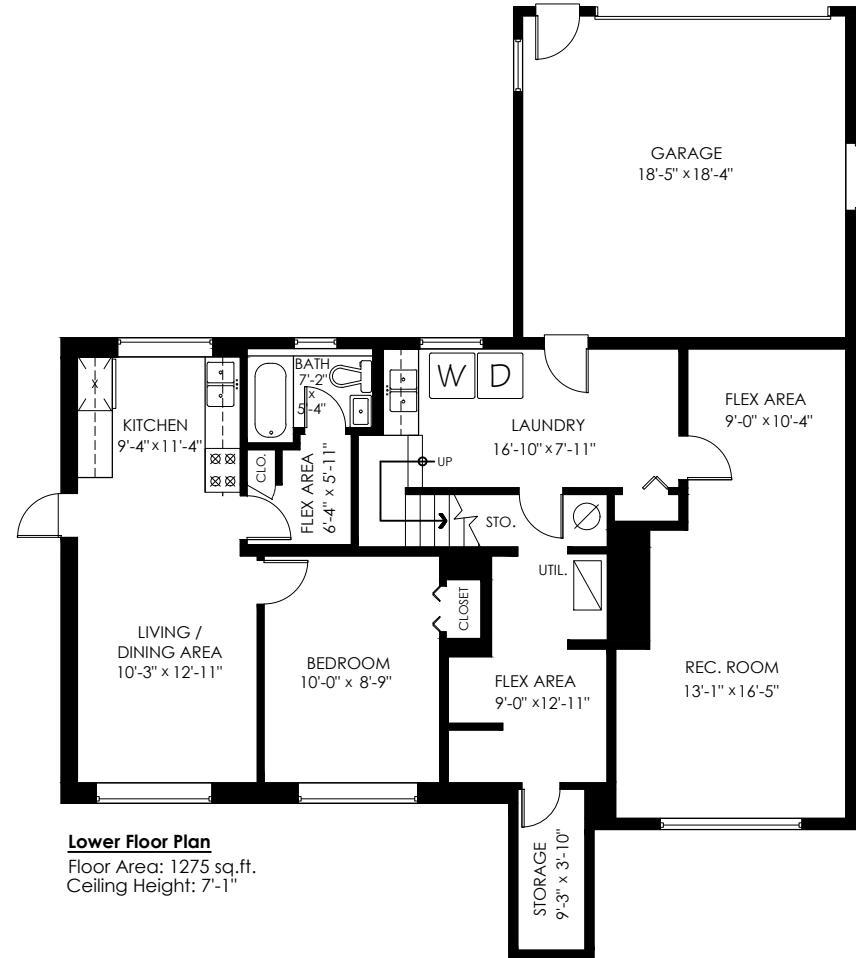
Main Floor: 1,245 sq.ft.  
Lower Floor: 1,275 sq.ft.  
**Total Livable: 2,520 sq.ft.**

Garage: 374 sq.ft.  
**Grand Total: 2,894 sq.ft.**

Deck: 291 sq.ft.



**Main Floor Plan**  
Floor Area: 1245 sq.ft.  
Ceiling Height: 8'-1"



**Lower Floor Plan**  
Floor Area: 1275 sq.ft.  
Ceiling Height: 7'-1"



E&O Insured. Total square foot calculated to gross unit area. SQFT based on interior measurements to exterior walls, not taken from original blueprints, may include unfinished area. This is for marketing purposes only and is not intended for architectural/construction use. All details, sizes & placements should be considered approximate within +/- 2% tolerance.

MEASURED ON: (2022-03-13)  
info@pixlworks.com www.pixlworks.com 604.329.5788

