

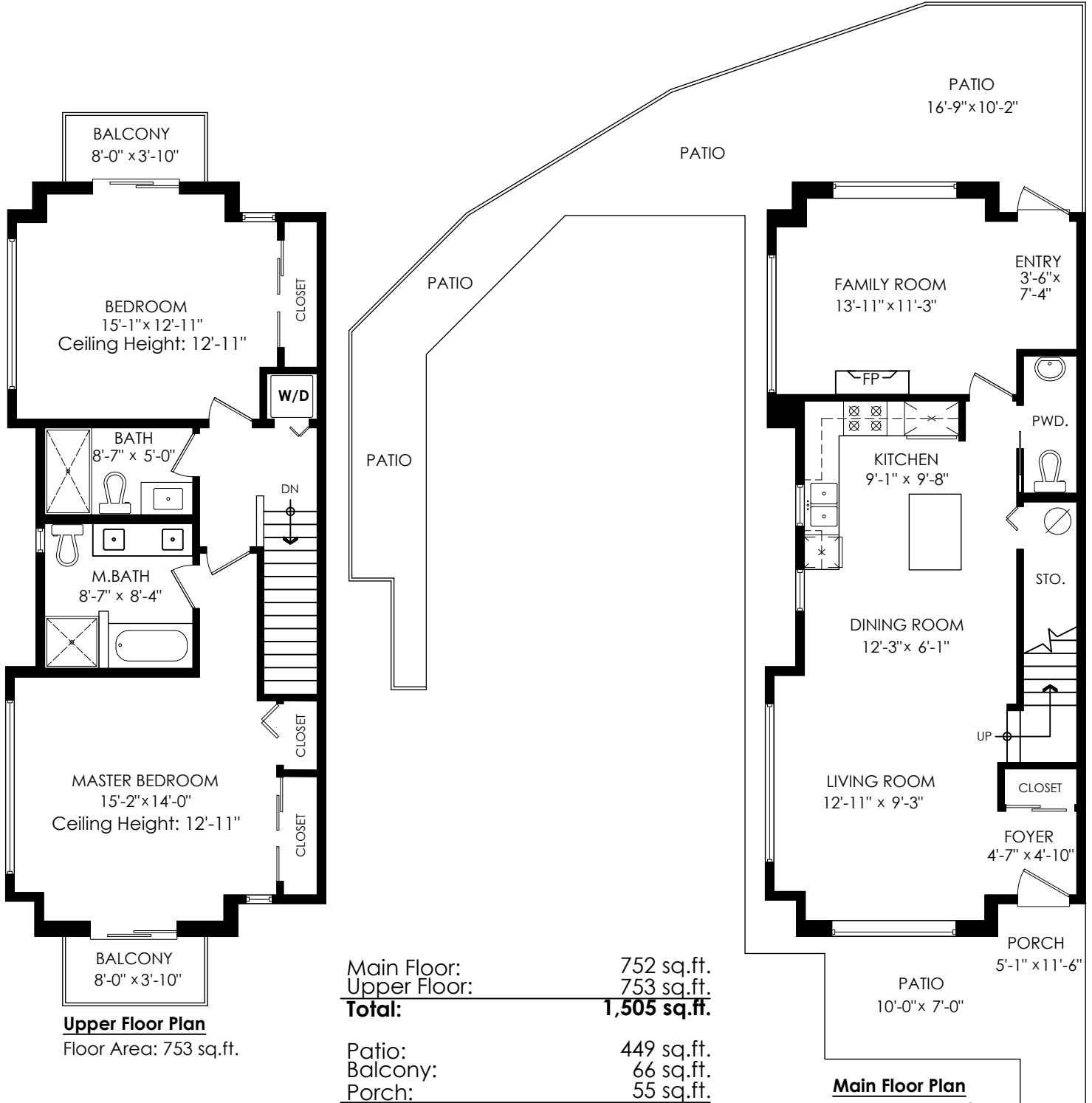
AXFORD

REAL ESTATE & PROPERTY MANAGEMENT GROUP



778-355-0116
 info@theaxfords.com
 www.theaxfords.com

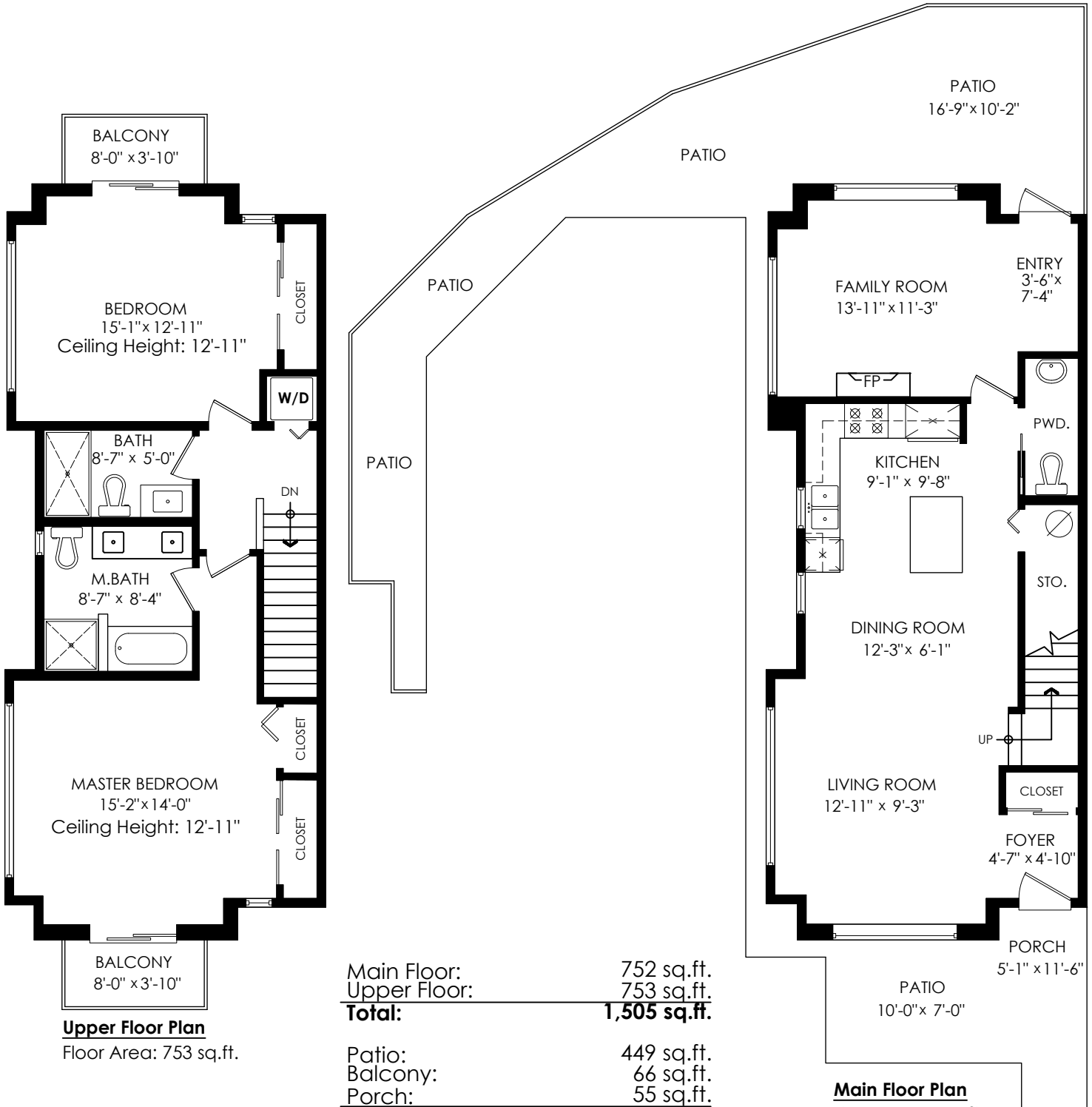
1-130 Brew Street,
 Port Moody



E&O Insured. Total square foot calculated to gross unit area. SQFT based on interior measurements to exterior walls, not taken from original blueprints, may include unfinished area. This is for marketing purposes only and is not intended for architectural/construction use. All details, sizes & placements should be considered approximate within +/- 2% tolerance. www.PixlWorks.com



1-130 Brew Street, Port Moody



Upper Floor Plan

Floor Area: 753 sq.ft.

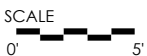
Main Floor: 752 sq.ft.
 Upper Floor: 753 sq.ft.
Total: 1,505 sq.ft.

Patio: 449 sq.ft.
 Balcony: 66 sq.ft.
 Porch: 55 sq.ft.
Total Extras: 570 sq.ft.

Ceiling Height: 9'-0"

Main Floor Plan

Floor Area: 752 ft.





Houses:

Total square footage is calculated to the outside of exterior walls.

Room sizes are dimensioned to the inside of the walls. This is because you need to know what you can fit in that room. When you add up the total of the room sizes it will not equal the total square footage of the property. This method of adding up room sizes will not account for wall thickness, interior hallways, exterior wall thickness, closets and many other areas that are included in total sqft.

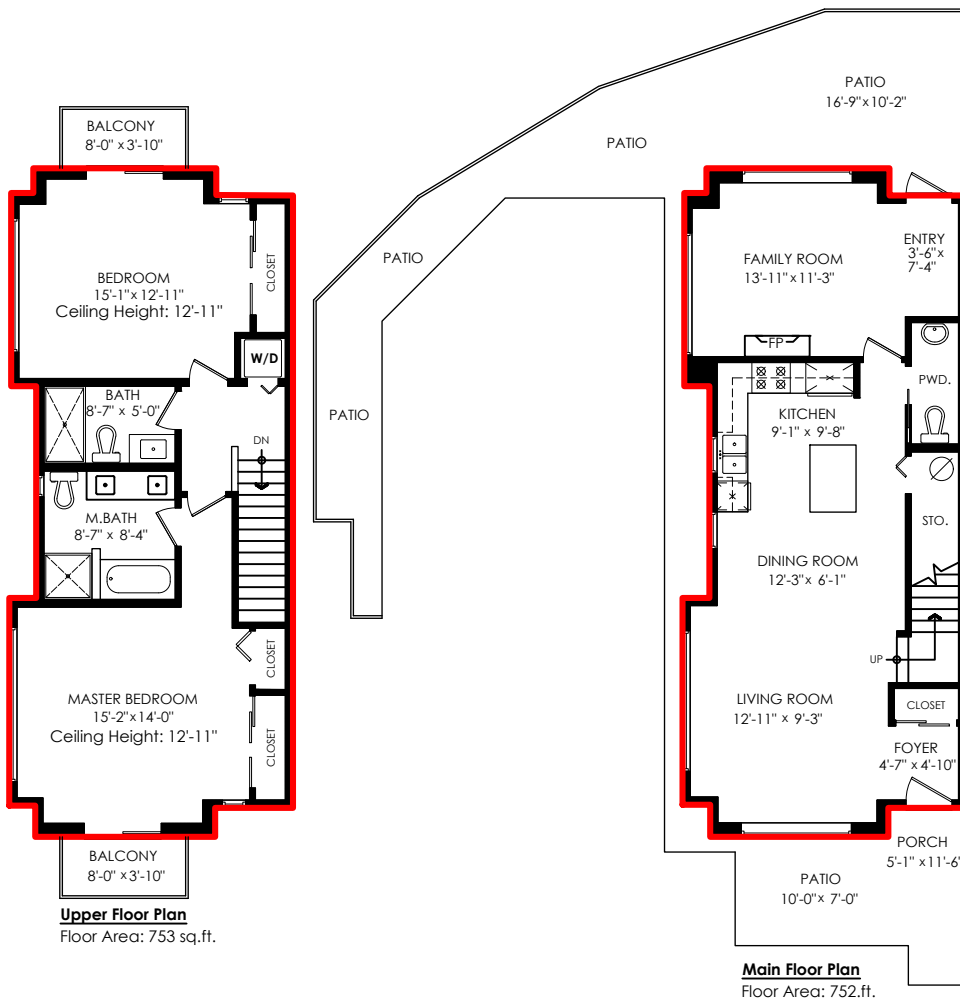
Any space that is not suitable for year-round use or has a ceiling height of less than 4 feet will not be considered living space. An example of this includes a deck, garage or attic. If there isn't heat, insulation or room for an adult to stand, then it will not be included in the living space.

Cantilevered fireplaces, chimneys and plant windows are also not considered living space.

Included in the living space will be the measurements for stair treads for the floor they service as well as the space under the lowest floor's stairs.

Areas open to the floor below (also known as double height ceilings) are not considered living space because there is no floor.

1-130 Brew Street, Port Moody



Main Floor:	752 sq.ft.
Upper Floor:	753 sq.ft.
Total:	1,505 sq.ft.
Patio:	449 sq.ft.
Balcony:	66 sq.ft.
Porch:	55 sq.ft.
Total Extras:	570 sq.ft.
Ceiling Height:	9'-0"