

AXFORD

REAL ESTATE & PROPERTY MANAGEMENT GROUP

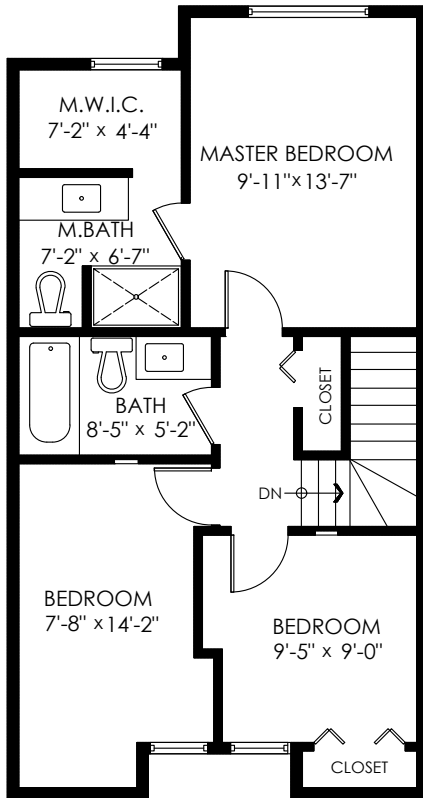


778-355-0116
info@theaxfords.com
www.theaxfords.com

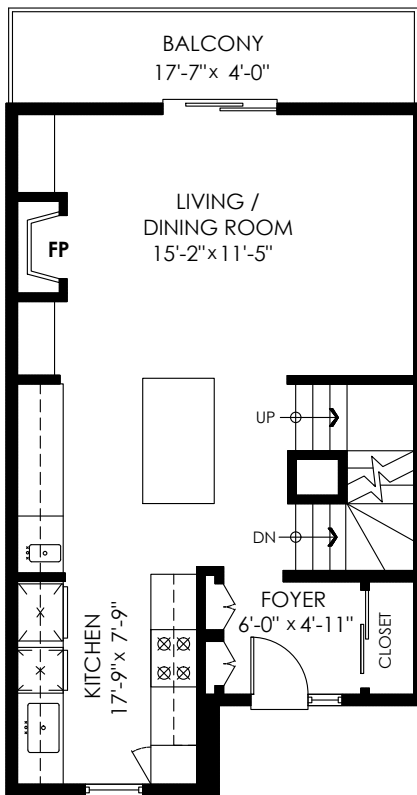
166 Brookside Dr, Port Moody

| | |
|-----------------------|---------------------|
| Main Floor: | 520 sq.ft. |
| Upper Floor: | 609 sq.ft. |
| Lower Floor: | 494 sq.ft. |
| Total Livable: | 1,623 sq.ft. |

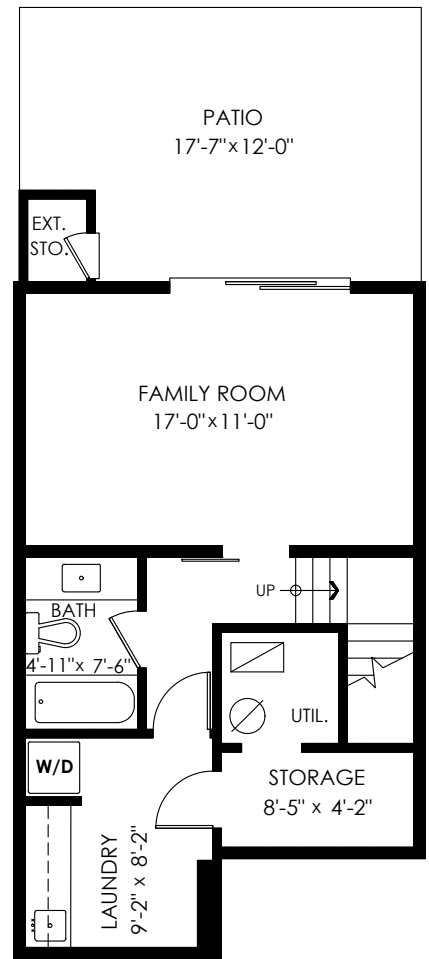
| | |
|----------------------|-------------------|
| Patio: | 198 sq.ft. |
| Ext. Sto.: | 13 sq.ft. |
| Balcony: | 70 sq.ft. |
| Total Extras: | 281 sq.ft. |



Upper Floor Plan
Floor Area: 609 sq.ft.
Ceiling Height: 7'-10"



Main Floor Plan
Floor Area: 520 sq.ft.
Ceiling Height: 8'



Lower Floor Plan
Floor Area: 494 sq.ft.
Ceiling Height: 7'-3"



MEASURED ON: (2021-02-14)

cotala

E&O Insured. Total square foot calculated to gross unit area. SQFT based on interior measurements to exterior walls, not taken from original blueprints, may include unfinished area. This is for marketing purposes only and is not intended for architectural/construction use. All details, sizes & placements should be considered approximate within +/- 2% tolerance.

info@pixlworks.com www.pixlworks.com 604.329.5788

